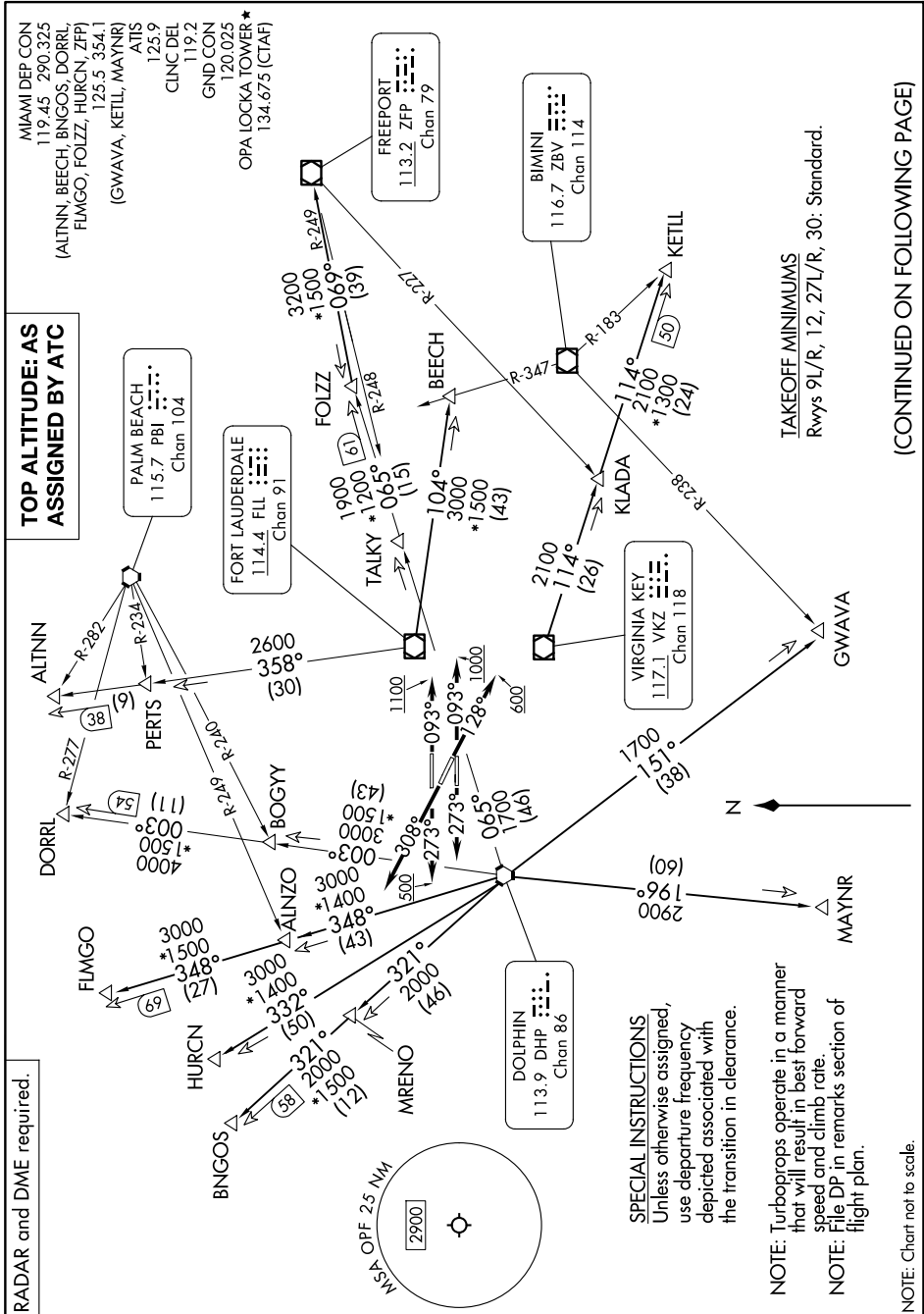


# MIAMI TWO DEPARTURE

SE-3, 23 JAN 2025 to 20 FEB 2025



RADAR and DME required.

**TOP ALTITUDE: AS ASSIGNED BY ATC**

MIAMI DEP CON  
119.45 290.325  
(ALTN, BEECH, BNGOS, DORR, FMGO, FOZZ, HURCN, ZFP, 125.5, 354.1 (GWAVA, KETL, MAYNR) ATIS 125.9 CLNC DEL 119.2 GND CON 120.025 OPA LOCKA TOWER\* 134.675 (CTAF)

FREEPORT  
113.2 ZFP  
Chan 79

BIMINI  
116.7 ZBV  
Chan 114

PALM BEACH  
115.7 PBI  
Chan 104

FORT LAUDERDALE  
114.4 FLL  
Chan 91

VIRGINIA KEY  
117.1 VKZ  
Chan 118

DOLPHIN  
113.9 DHP  
Chan 86

**SPECIAL INSTRUCTIONS**  
Unless otherwise assigned, use departure frequency depicted associated with the transition in clearance.

**NOTE:** Turboprops operate in a manner that will result in best forward speed and climb rate.  
**NOTE:** File DP in remarks section of flight plan.  
**NOTE:** Chart not to scale.

**TAKEOFF MINIMUMS**  
Rwys 9L/R, 12, 27L/R, 30: Standard.

(CONTINUED ON FOLLOWING PAGE)

# MIAMI TWO DEPARTURE

SE-3, 23 JAN 2025 to 20 FEB 2025