

WAAS CH <b>53644</b> <b>W30A</b>	APP CRS <b>308°</b>	Rwy Idg TDZE Apt Elev	<b>6800</b> <b>8</b> <b>8</b>
--	------------------------	-----------------------------	-------------------------------------

# RNAV (GPS) RWY 30

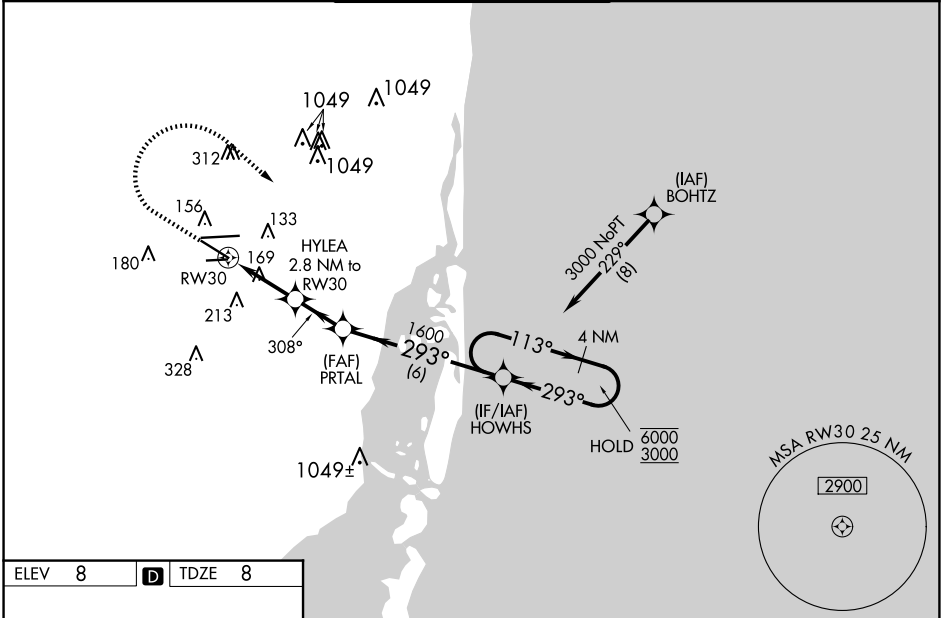
MIAMI-OPA LOCKA EXEC (OPF)

RNP APCH - GPS.

**⚠** Baro-VNAV and VDP NA when using Miami Intl altimeter setting.  
**⚠** Rwy 30 helicopter visibility reduction below  $\frac{3}{4}$  SM NA. For uncompensated Baro-VNAV systems, LNAV/VNAV NA below 7°C or above 54°C. When local altimeter setting not received, use Miami Intl altimeter setting; increase LPV DA to 276 feet and all visibilities  $\frac{1}{8}$  SM; increase LNAV/VNAV DA to 438 feet and all visibilities  $\frac{1}{8}$  SM; increase all MDAs 20 feet and LNAV visibility Cat C/D  $\frac{1}{8}$  SM and Circling visibility Cat D  $\frac{1}{4}$  SM.

**MISSED APPROACH:** Climb to 800 then climbing right turn to 3000 direct HOWHS and hold, continue climb-in-hold to 3000.

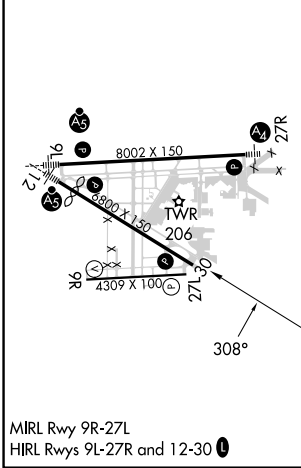
ATIS <b>125.9</b>	MIAMI APP CON <b>128.6 306.975</b>	OPA LOCKA TOWER ★ <b>134.675 (CTAF) 0</b>	GND CON <b>120.025</b>	CLNC DEL <b>119.2</b>	GCO <b>119.45</b>
----------------------	---------------------------------------	--	---------------------------	--------------------------	----------------------



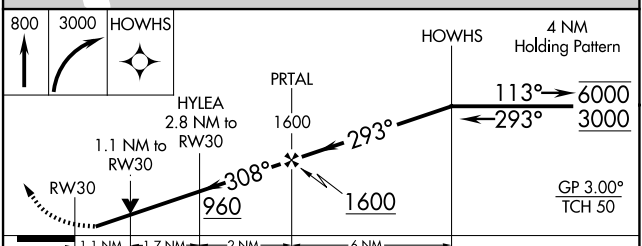
SE-3, 23 JAN 2025 to 20 FEB 2025

SE-3, 23 JAN 2025 to 20 FEB 2025

ELEV 8	<b>D</b>	TDZE 8
--------	----------	--------



MIRL Rwy 9R-27L  
 HIRL Rwys 9L-27R and 12-30 **0**



CATEGORY	A	B	C	D
LPV DA		258- $\frac{3}{4}$	250 (300- $\frac{3}{4}$ )	
LNAV/VNAV DA		420-1 $\frac{1}{8}$	412 (500-1 $\frac{1}{8}$ )	
LNAV MDA	420-1	412 (500-1)	420-1 $\frac{1}{8}$	412 (500- $\frac{1}{8}$ )
<b>C</b> CIRCLING	480-1 472 (500-1)	520-1 512 (600-1)	620-1 $\frac{3}{4}$ 612 (700-1 $\frac{3}{4}$ )	740-2 $\frac{1}{4}$ 732 (800-2 $\frac{1}{4}$ )