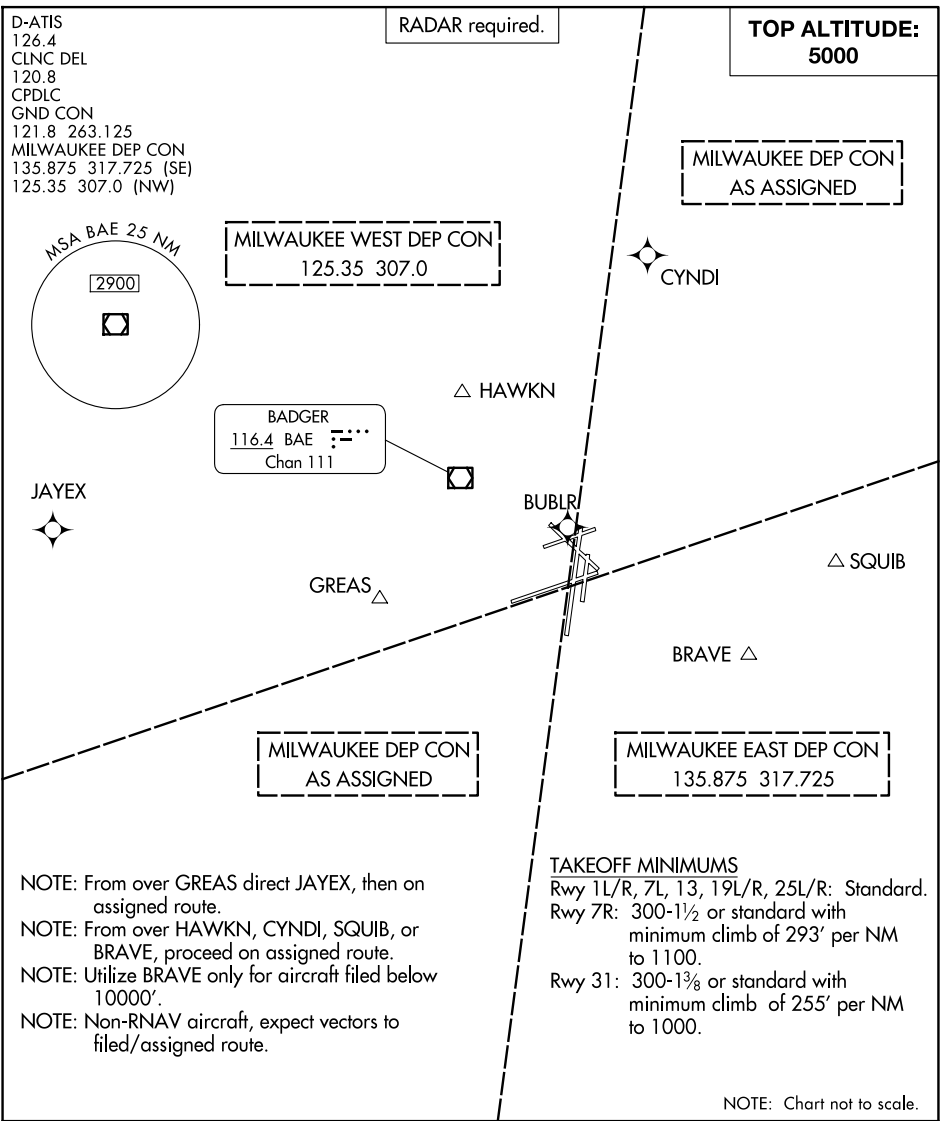


(MKE9.BUBLR) 23334

MITCHELL NINE DEPARTURE

AL-262 (FAA)

GENERAL MITCHELL INTL (MKE)  
MILWAUKEE, WISCONSIN



DEPARTURE ROUTE DESCRIPTION

TAKEOFF ALL RUNWAYS: Turn to assigned heading, maintain 5000 or assigned altitude.  
Expect RADAR vectors to join filed/assigned route. Expect clearance to filed altitude ten  
minutes after departure.

MITCHELL NINE DEPARTURE

(MKE9.BUBLR) 10AUG23

MILWAUKEE, WISCONSIN  
GENERAL MITCHELL INTL (MKE)

EC-3, 23 JAN 2025 to 20 FEB 2025

EC-3, 23 JAN 2025 to 20 FEB 2025