

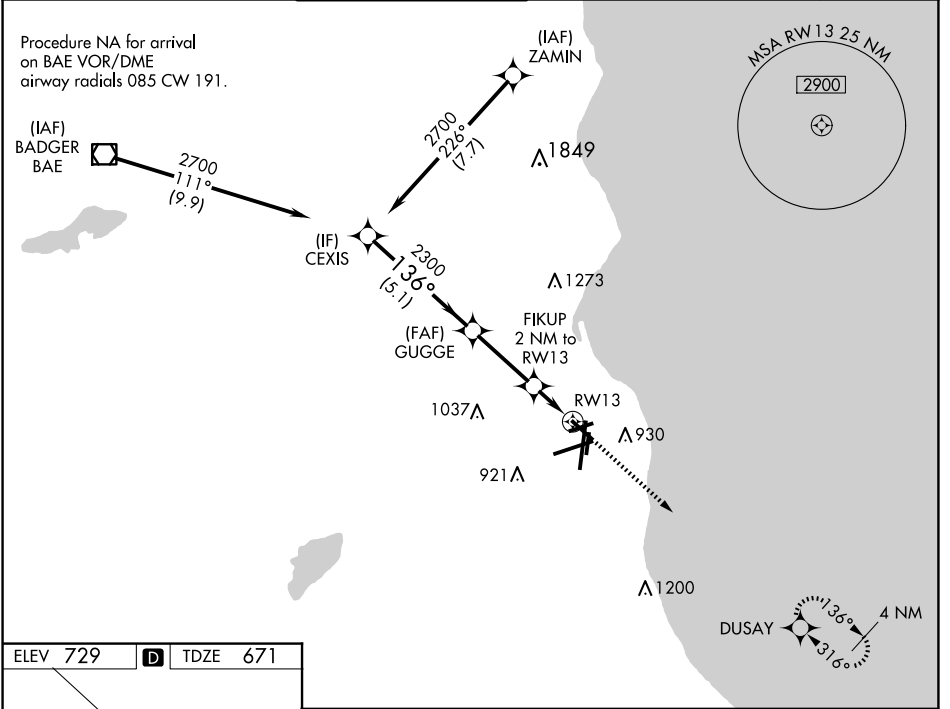
WAAS CH <b>99342</b> <b>W13A</b>	APP CRS <b>136°</b>	Rwy Idg TDZE Apt Elev	<b>4797</b> <b>671</b> <b>729</b>
--	------------------------	-----------------------------	---

# RNAV (GPS) RWY 13

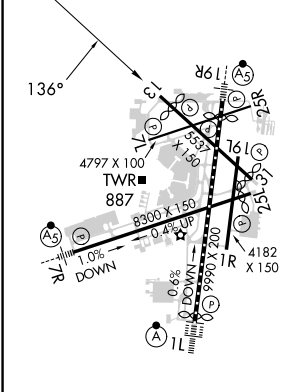
GENERAL MITCHELL INTL (MKE)

RNP APCH.		MISSED APPROACH: Climb to 2900 direct DUSAY and hold.	
Rwy 13 helicopter visibility reduction below 3/4 SM NA. For uncompensated Baro-VNAV systems, LNAV/VNAV NA below -19°C or above 54°C.			

D-ATIS <b>126.4</b>	MILWAUKEE APP CON <b>126.5 307.0</b>	MILWAUKEE TOWER <b>124.575 269.05</b>	GND CON <b>121.8 263.125</b>	CLNC DEL <b>120.8</b>	CPDLC
------------------------	---	--	---------------------------------	--------------------------	-------



ELEV <b>729</b>	<b>D</b>	TDZE <b>671</b>
-----------------	----------	-----------------



TDZ/CL Rwy 11  
REIL Rws 1R, 7L,  
13, 25L, 25R, and 31  
HIRL Rws 1L-19R and 7R-25L  
MIRL Rws 1R-19L, 13-31, and 7L-25R

CEXIS	GUGGE	FIKUP 2 NM to RW13	DUSAY
2700	2300	2300	2900
*LNAV only.			
2700		2900	
136°		136°	
2300		1360	
GP 3.00° TCH 54		*1.3 NM to RW13	
5.1 NM		3 NM	
		0.7 NM	
		1.3 NM	
CATEGORY	A	B	C
LPV DA		971-1	300 (300-1)
LNAV/ VNAV DA		1189-1 <sup>3</sup> / <sub>8</sub>	518 (500-1 <sup>3</sup> / <sub>8</sub> )
LNAV MDA	1140-1	469 (500-1)	1140-1 <sup>3</sup> / <sub>8</sub> 469 (500-1 <sup>3</sup> / <sub>8</sub> )
CIRCLING	1240-1	511 (600-1)	1240-1 <sup>1</sup> / <sub>2</sub> 511 (600-1 <sup>1</sup> / <sub>2</sub> ) 1360-2 631 (700-2)

EC-3, 23 JAN 2025 to 20 FEB 2025

EC-3, 23 JAN 2025 to 20 FEB 2025