

WAAS CH 56618 W06A	APP CRS 060°	Rwy Idg TDZE Apt Elev	6501 623 629
--	------------------------	-----------------------------	---

RNAV (GPS) RWY 6

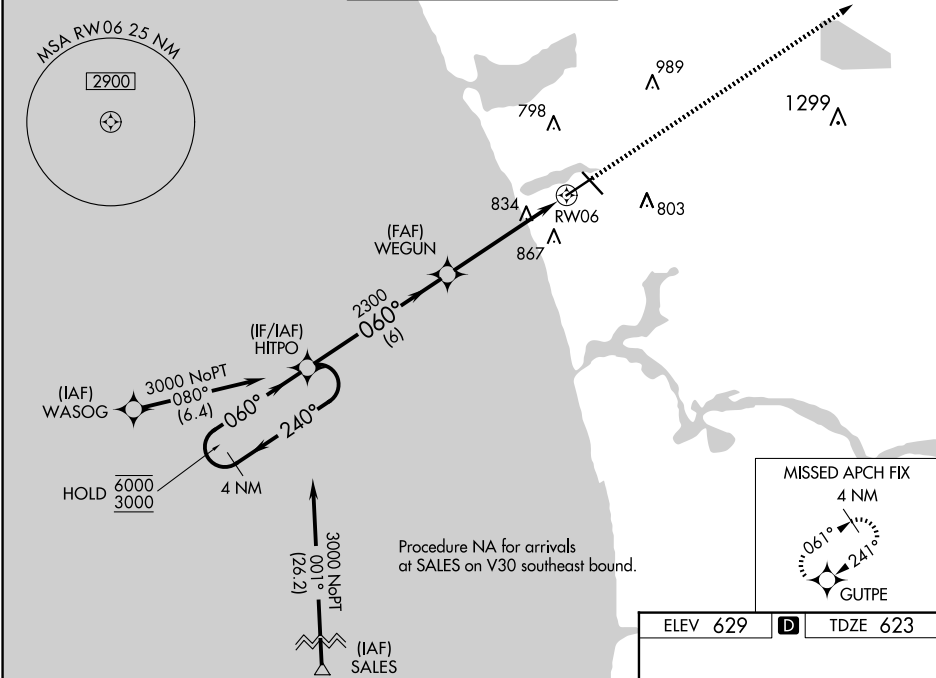
MUSKEGON COUNTY (MKG)

RNP APCH.

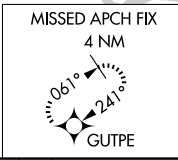
⚠ Rwy 6 helicopter visibility reduction below 3/4 SM NA. For uncompensated Baro-VNAV systems, LNAV/VNAV NA below -18°C or above 54°C.

MISSED APPROACH: Climb to 3000 direct GUTPE and hold.

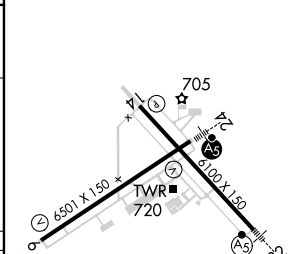
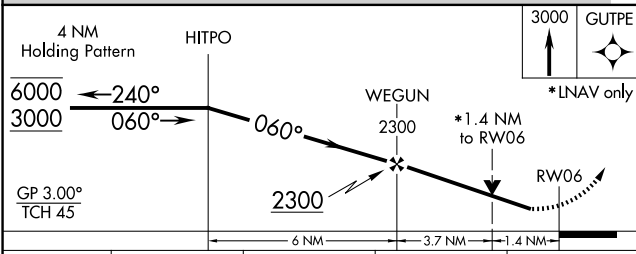
ATIS 124.3	GREAT LAKES APP CON★ 119.8 290.35 (North) 133.825 290.35 (South)	MUSKEGON TOWER★ 126.25 (CTAF) 0 343.725	GND CON 121.6	UNICOM 122.95
----------------------	--	--	-------------------------	-------------------------



Procedure NA for arrivals at SALES on V30 southeast bound.



ELEV 629	D	TDZE 623
----------	----------	----------



CATEGORY	A	B	C	D
LPV DA	928-7/8 305 (300-7/8)			
LNAV/VNAV DA	975-1 352 (400-1)			
LNAV MDA	1100-1	477 (500-1)	1100-1 3/8 477 (500-1 3/8)	
C CIRCLING	1100-1 471 (500-1)	1180-1 551 (600-1)	1200-1 1/2 571 (600-1 1/2)	1200-2 571 (600-2)

REIL Rwy 6 **0**
 REIL Rwy 14
 HIRL Rwys 6-24 **0**
 HIRL Rwys 14-32

EC-1, 23 JAN 2025 to 20 FEB 2025

EC-1, 23 JAN 2025 to 20 FEB 2025