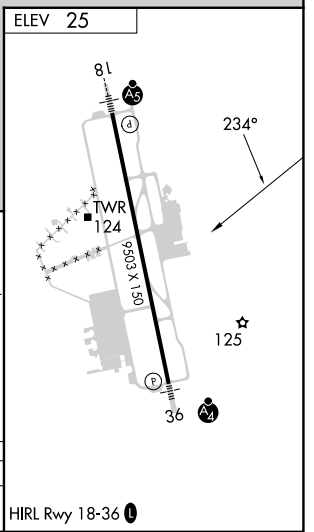
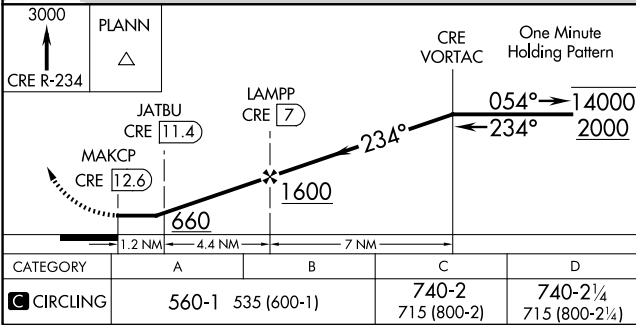
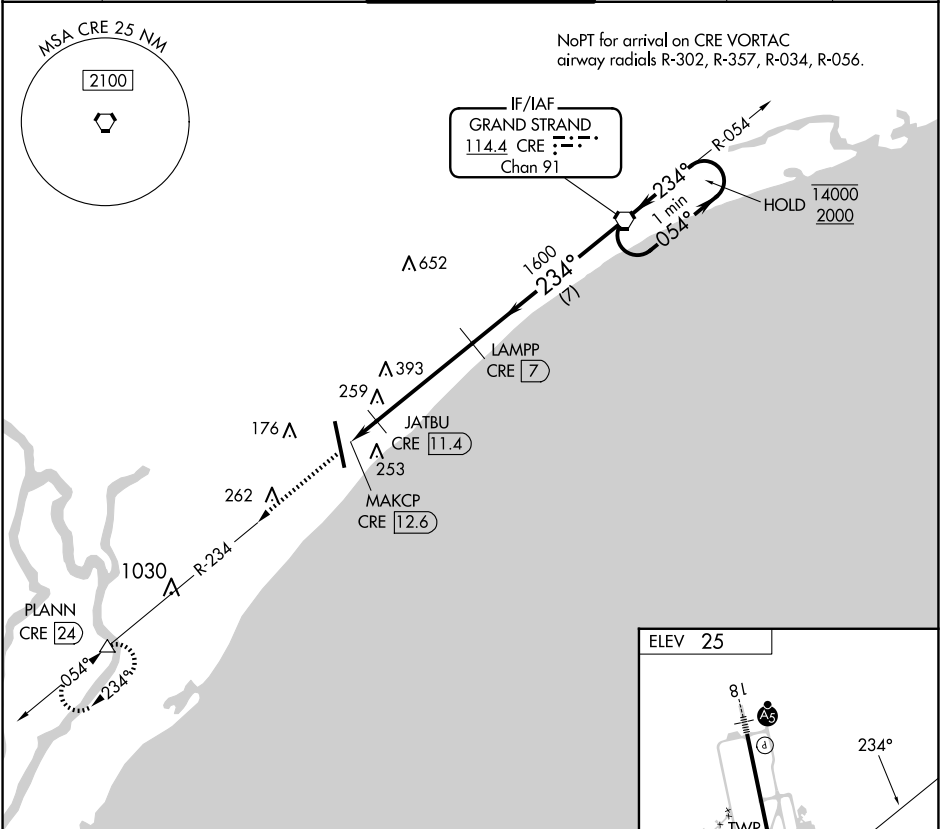


VORTAC CRE <b>114.4</b> Chan <b>91</b>	APP CRS <b>234°</b>	Rwy Idg TDZE Apt Elev	<b>N/A</b> <b>N/A</b> <b>25</b>
--	------------------------	-----------------------------	---------------------------------------

# VOR-A

MYRTLE BEACH INTL (MYR)

DME required.		MISSED APPROACH: Climb to 3000 on CRE VORTAC R-234 to PLANN/24 DME and hold, continue climb-in-hold to 3000.			
ATIS <b>123.925</b>	MYRTLE BEACH APP CON ★ (171° - 321°) <b>127.4 257.95</b> (322° - 170°) <b>119.2 350.3</b>	MYRTLE BEACH TOWER ★ <b>128.45</b> (CTAF) <b>259.3</b>	GND CON <b>120.3 275.8</b>	CLNC DEL <b>120.3</b>	UNICOM <b>122.95</b>



CATEGORY	A	B	C	D
CIRCLING	560-1	535 (600-1)	740-2 715 (800-2)	740-2½ 715 (800-2½)

HIRL Rwy 18-36

SE-2, 23 JAN 2025 to 20 FEB 2025

SE-2, 23 JAN 2025 to 20 FEB 2025