

(OAK.VNYRD1) 24305

AL-281 (FAA)

VNYRD ONE ARRIVAL (RNAV) Arrival Routes

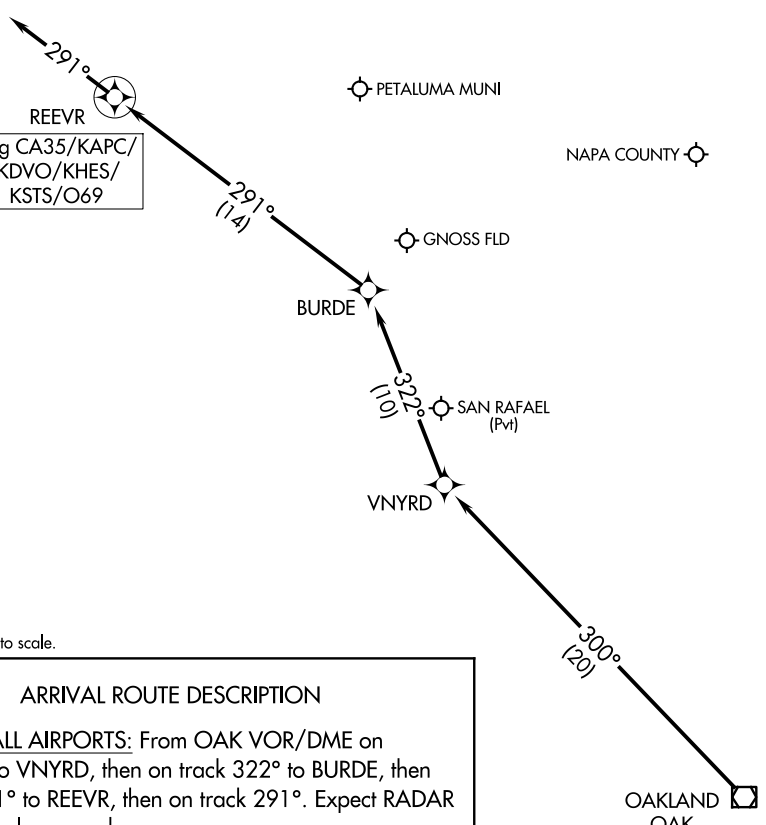
NAPA, CALIFORNIA

HEALDSBURG
MUNI

RNAV 1 - DME/DME/IRU or GPS.
RADAR required.

OAKLAND CENTER
127.8 353.5
APC ATIS
124.05
STS ATIS
120.55
APC GND CON
121.7
STS GND CON
121.9
NAPA TOWER ★
118.7 257.8
SANTA ROSA TOWER ★
118.5 363.0

CHARLES M SCHULZ/
SONOMA COUNTY



SW-2, 23 JAN 2025 to 20 FEB 2025

SW-2, 23 JAN 2025 to 20 FEB 2025

NOTE: Chart not to scale.

ARRIVAL ROUTE DESCRIPTION

LANDING ALL AIRPORTS: From OAK VOR/DME on track 300° to VNYRD, then on track 322° to BURDE, then on track 291° to REEVR, then on track 291°. Expect RADAR vectors to final approach course.

VNYRD ONE ARRIVAL (RNAV) Arrival Routes

NAPA, CALIFORNIA

(OAK.VNYRD1) 11JUL24