


LOC/DME I-ORF 109.1 Chan 28	APP CRS 047°	Rwy ldg 7809 TDZE 26 Apt Elev 27
--	------------------------	--

ILS or LOC RWY 5

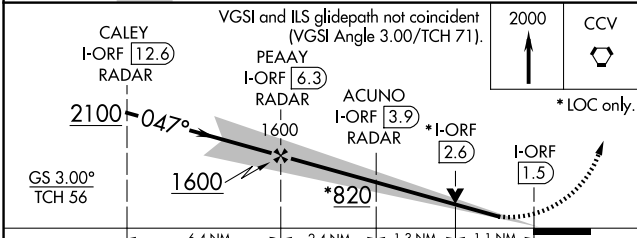
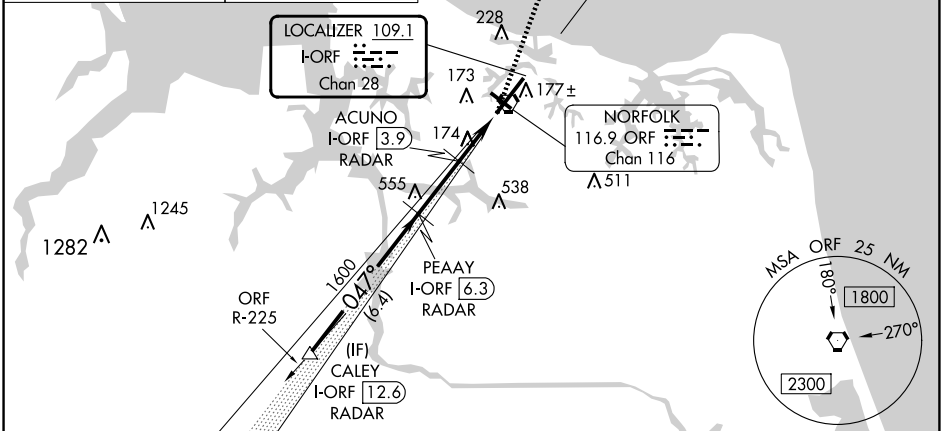
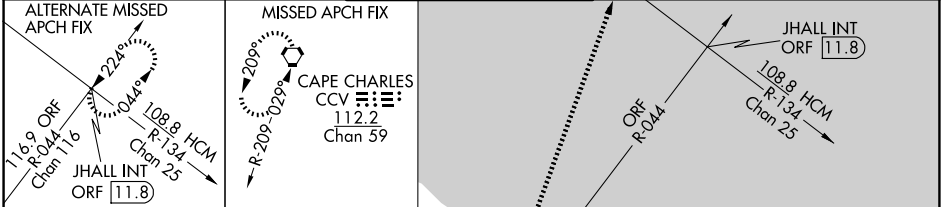
NORFOLK INTL (ORF)

DME or RADAR required. RADAR required for procedure entry.

Autopilot coupled approach NA below 1180. For inop ALS, increase S-LOC 5 Cat C and D visibility to RVR 6000. ** RVR 1800 authorized with use of FD or AP or HUD to DA.

MALS  MISSED APPROACH: Climb to 2000 direct CCV VORTAC and hold.

ATIS 127.15	NORFOLK APP CON 118.9 353.7	NORFOLK TOWER 120.8 257.8	GND CON 121.9	CLNC DEL 118.5
-----------------------	---------------------------------------	-------------------------------------	-------------------------	--------------------------



CATEGORY	A	B	C	D
S-ILS 5**		226/24	200 (200-½)	
S-LOC 5	440/24	414 (500-½)	440/40	414 (500-¾)
CIRCLING	480-1 453 (500-1)	540-1 513 (600-1)	540-1½ 513 (600-1½)	900-2¾ 873 (900-2¾)

ELEV 27	TDZE 26
---------	---------

REIL Rwy 14 and 32
HIRL Rwy 5-23
MIRL Rwy 14-32

FAF to MAP 4.8 NM					
Knots	60	90	120	150	180
Min:Sec	4:48	3:12	2:24	1:55	1:36

NE-3, 23 JAN 2025 to 20 FEB 2025

NE-3, 23 JAN 2025 to 20 FEB 2025