

# HI-TACAN Y RWY 32L

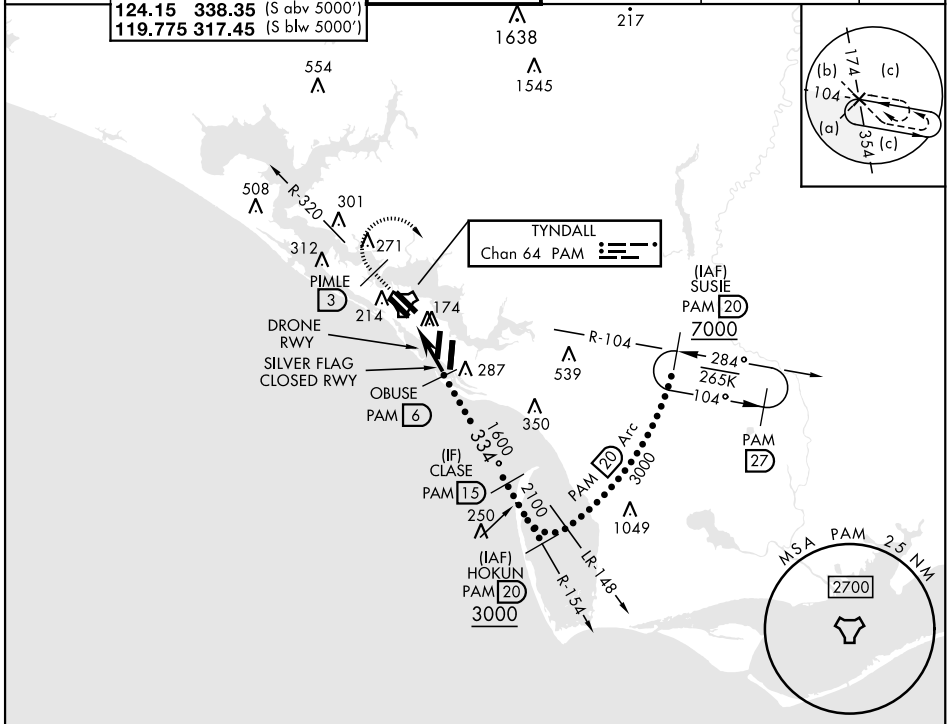
TACAN PAM Chan <b>64</b>	APCH CRS <b>334°</b>	Rwy Ldg TDZE <b>9135</b> Arprt Elev <b>17</b>
-----------------------------	-------------------------	---

[USAF]

TYNDALL AFB (KPAM)

**MISSED APPROACH:** Track outbound PAM TACAN R-320 to 3 DME (PIMLE), then turn right to join PAM R-104 to 20 DME (SUSIE) and hold. Maintain 3000.

ATIS ★ <b>254.4</b>	APP CON <b>125.2 392.1</b> (N abv 5000') <b>120.825 379.3</b> (N blw 5000') <b>124.15 338.35</b> (S abv 5000') <b>119.775 317.45</b> (S blw 5000')	TOWER ★ <b>133.95 263.15</b>	GND CON <b>121.9 259.3</b>	CLNC DEL <b>118.05 348.7</b>	ASR/PAR
------------------------	--	---------------------------------	-------------------------------	---------------------------------	---------



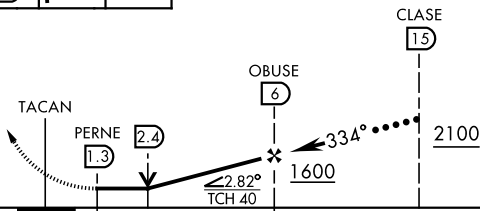
SE-3, 23 JAN 2025 to 20 FEB 2025

SE-3, 23 JAN 2025 to 20 FEB 2025

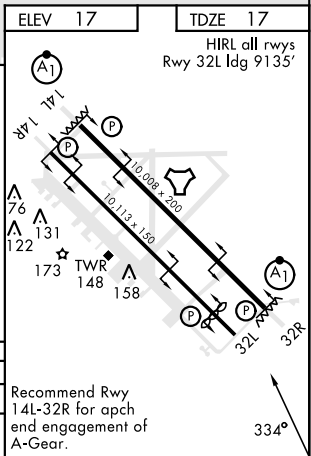
EMERG SAFE ALT 100 NM 3300

3000 PAM R-320	PIMLE PAM 3	PAM R-104	SUSIE PAM 20
----------------------	-------------------	--------------	--------------------

VGSI and descent angles not coincident (VGSI Angle 2.50/TCH 40).



CATEGORY	C	D	E
S-32L	540-1½	480-1¾ 463 (500-1¾)	620-2¼
CIRCLING	523 (600-1½)	580-2 563 (600-2)	603 (700-2¼)



Recommend Rwy 14L-32R for apch end engagement of A-Gear.

# HI-TACAN Y RWY 32L