

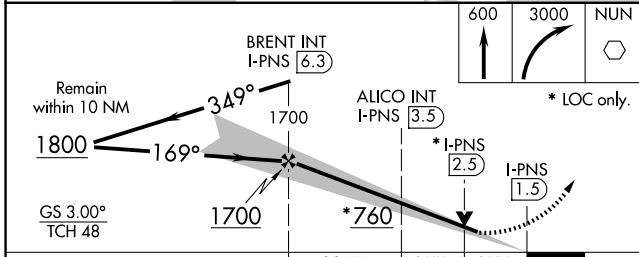
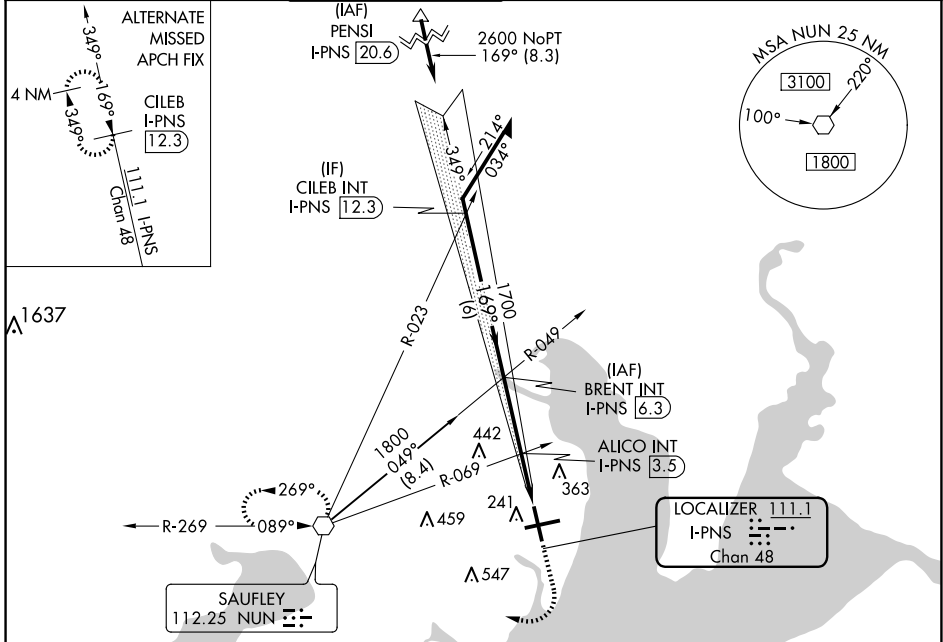
LOC/DME I-PNS <b>111.1</b> Chan <b>48</b>	APP CRS <b>169°</b>	Rwy Idg <b>7004</b> TDZE <b>121</b> Apt Elev <b>121</b>
---	------------------------	---

# ILS or LOC RWY 17

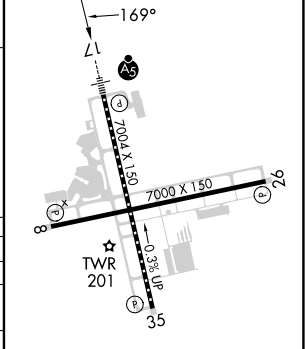
PENSACOLA INTL (PNS)

	For inop ALS, increase S-LOC 17 Cats A/B to RVR 5500 and Cats C/D to 1 1/4 SM. ALICO FIX MINIMUMS: For inop ALS increase S-LOC 17 all Cats visibility to RVR 5500. CAUTION: Intensive VFR student training in vicinity of airport.	MALSR 	MISSED APPROACH: Climb to 600 then climbing right turn to 3000 direct NUN VOR and hold, continue climb-in-hold to 3000.
--	---	-----------	---

ATIS <b>121.25</b>	PENSACOLA APP CON <b>119.0 269.375</b>	PENSACOLA TOWER ★ <b>119.9 (CTAF) 0 257.8</b>	GND CON <b>121.9 348.6</b>	CLNC DEL <b>123.725 256.875</b>	UNICOM <b>122.95</b>
-----------------------	---	--	-------------------------------	------------------------------------	-------------------------



ELEV	121	TDZE	121
------	-----	------	-----



CATEGORY	A	B	C	D
S-ILS 17		321/18	200 (200-1/2)	
S-LOC 17	760/24	639 (700-1/2)	760-1 3/8	639 (700-1 3/8)
CIRCLING	760-1	639 (700-1)	860-2 739 (800-2)	860-2 1/4 739 (800-2 1/4)
ALICO FIX MINIMUMS (DUAL VOR RECEIVERS OR DME REQUIRED)				
S-LOC 17	480/24	359 (400-1/2)	480/30	359 (400-5/8)
CIRCLING	580-1 459 (500-1)	680-1 559 (600-1)	860-2 739 (800-2)	860-2 1/4 739 (800-2 1/4)

REIL Rwys 8, 26 and 35	TDZ/CL Rwy 17	HIRL Rwys 8-26 and 17-35			
FAF to MAP 4.8 NM					
Knots	60	90	120	150	180
Min:Sec	4:48	3:12	2:24	1:55	1:36

SE-3, 23 JAN 2025 to 20 FEB 2025

SE-3, 23 JAN 2025 to 20 FEB 2025