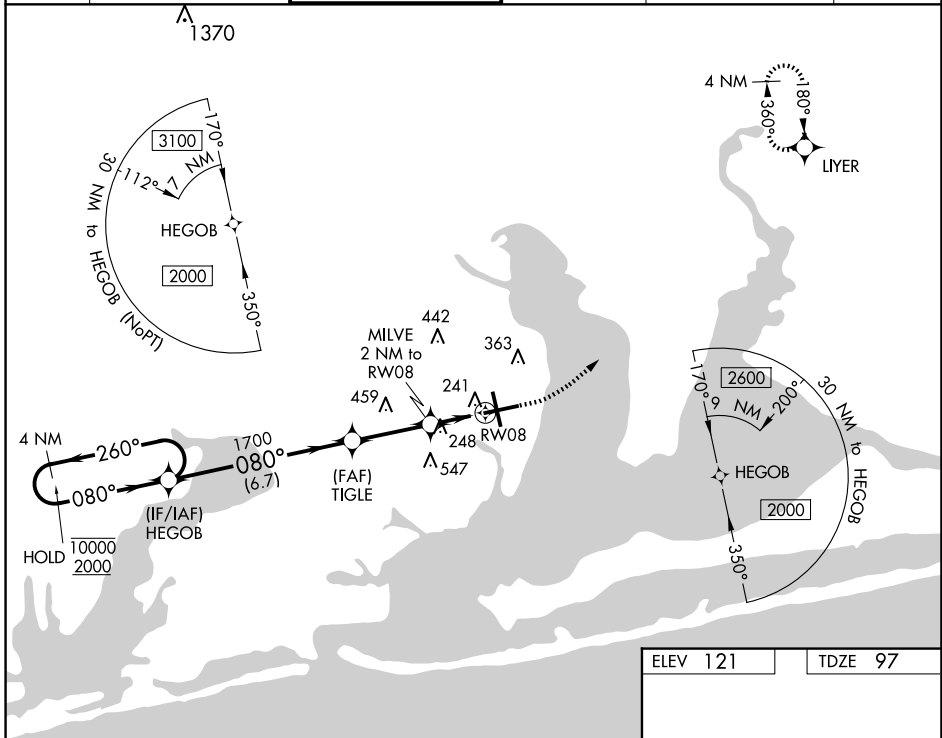


WAAS CH 86219 W08A	APP CRS 080°	Rwy Idg 7000 TDZE 97 Apt Elev 121
--	------------------------	--

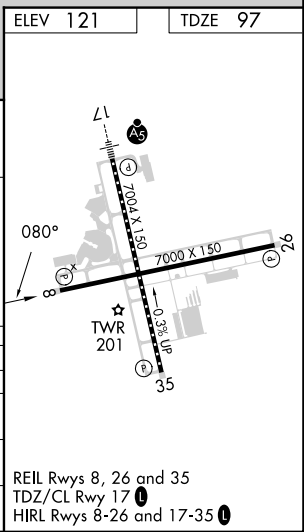
RNAV (GPS) RWY 8

PENSACOLA INTL (PNS)

RNP APCH.		MISSED APPROACH: Climb to 600 then climbing left turn to 2200 direct LIYER and hold.			
<p>▼ Rwy 8 helicopter visibility reduction below 3/4 SM NA. For uncompensated Baro-VNAV systems, LNAV/VNAV NA below 1°C or above 54°C. ▲ CAUTION: Intensive VFR student training in vicinity of airport.</p>					
ATIS 121.25	PENSACOLA APP CON 119.0 269.375	PENSACOLA TOWER ★ 119.9 (CTAF) 0 257.8	GND CON 121.9 348.6	CLNC DEL 123.725 256.875	UNICOM 122.95



4 NM Holding Pattern HEGOB		600		2200		LIYER	
<p>10000 ← 260° 2000 → 080°</p> <p>GP 3.00° TCH 55</p>		<p>TIGLE 1700</p> <p>MILVE 2 NM to RWY 8</p> <p>*1.3 NM to RWY 8</p> <p>RWY 8</p>		<p>*LNAV only.</p>			
← 6.7 NM		← 2.9 NM		← 0.7 NM		← 1.3 NM	
CATEGORY	A	B	C	D			
LPV DA	347-1		250 (300-1)				
LNAV/VNAV DA	402-1		305 (300-1)				
LNAV MDA	560-1 463 (500-1)		560-1 3/8 463 (500-1 3/8)				
CIRCLING	580-1 459 (500-1)		680-1 559 (600-1)		860-2 739 (800-2)		860-2 1/4 739 (800-2 1/4)



SE-3, 23 JAN 2025 to 20 FEB 2025

SE-3, 23 JAN 2025 to 20 FEB 2025