

NUN VOR 112.25	APP CRS 089°	Rwy ldg 7000 TDZE 97 Apt Elev 121
--------------------------	------------------------	--

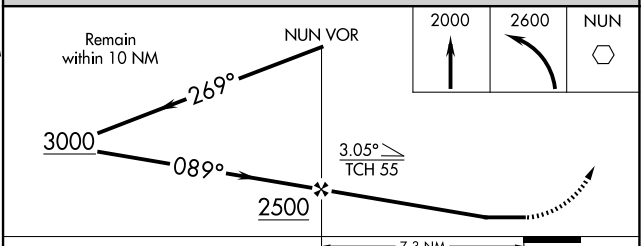
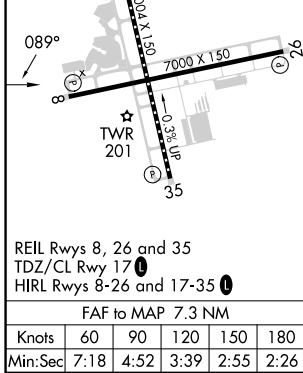
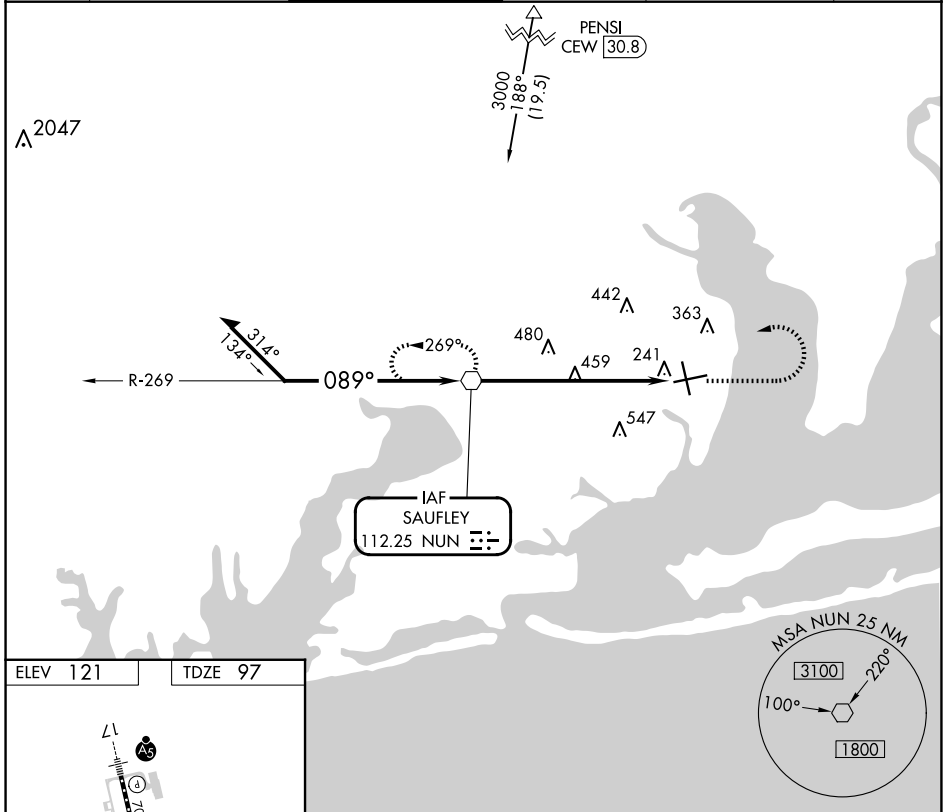
VOR RWY 8

PENSACOLA INTL (PNS)

CAUTION: Intensive student training in vof airport.
Rwy 8 helicopter visibility reduction below 3/4 SM NA.

MISSED APPROACH: Climb to 2000 then climbing left turn to 2600 direct NUN VOR and hold.

ATIS 121.25	PENSACOLA APP CON 119.0 269.375	PENSACOLA TOWER ★ 119.9 (CTAF) 0 257.8	GND CON 121.9 348.6	CLNC DEL 123.725 256.875	UNICOM 122.95
-----------------------	---	--	-------------------------------	------------------------------------	-------------------------



CATEGORY	A	B	C	D
S-8	800-1	703 (700-1)	800-2	703 (700-2)
CIRCLING	800-1	679 (700-1)	860-2 739 (800-2)	860-2 1/4 739 (800-2 1/4)

SE-3, 23 JAN 2025 to 20 FEB 2025

SE-3, 23 JAN 2025 to 20 FEB 2025