

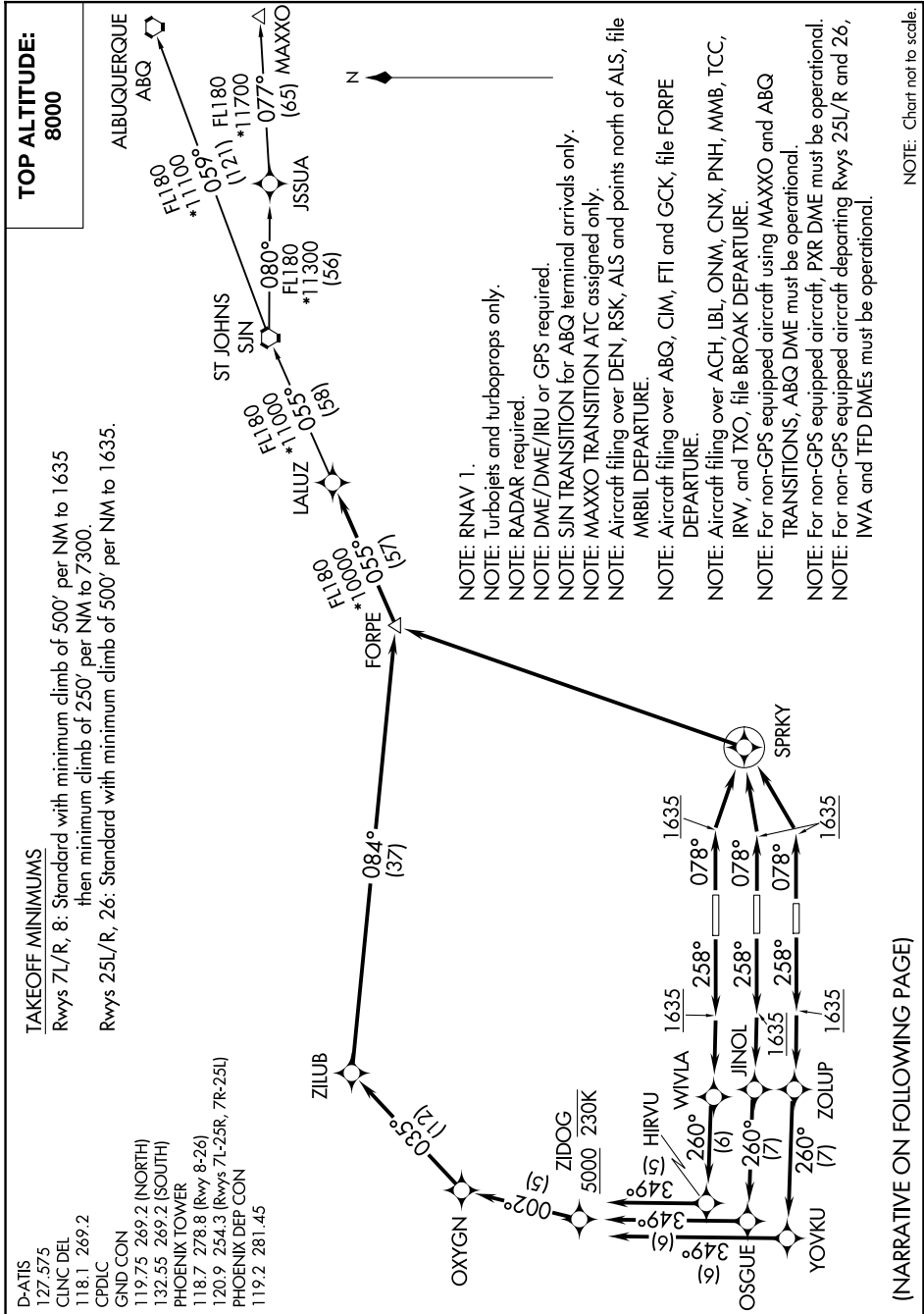
SW-4, 23 JAN 2025 to 20 FEB 2025

TAKEOFF MINIMUMS

Rwys 7L/R, 8: Standard with minimum climb of 500' per NM to 1635 then minimum climb of 250' per NM to 7300.
Rwys 25L/R, 26: Standard with minimum climb of 500' per NM to 1635.

- D-ATIS 127.575
- CLNC DEL 118.1 269.2
- CPDLC 119.75 269.2 (NORTH)
- 132.55 269.2 (SOUTH)
- PHOENIX TOWER 118.7 278.8 (Rwy 8-26)
- 120.9 254.3 (Rwys 7L-25R, 7R-25L)
- PHOENIX DEP CON 119.2 281.45

FORPE ONE DEPARTURE (RNAV)
(FORPE1.FORPE) 24MAY18



(NARRATIVE ON FOLLOWING PAGE)

NOTE: Chart not to scale.

SW-4, 23 JAN 2025 to 20 FEB 2025