

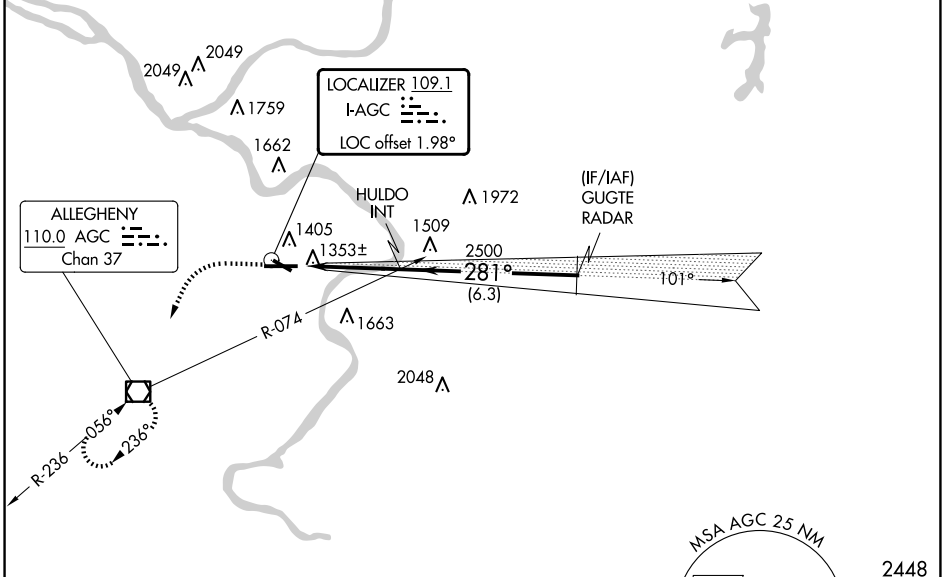
LOC I-AGC <b>109.1</b>	APP CRS <b>281°</b>	Rwy ldg TDZE Apt Elev	<b>6501</b> <b>1251</b> <b>1252</b>
---------------------------	------------------------	-----------------------------	---

**ILS or LOC RWY 28**  
ALLEGHENY COUNTY (AGC)

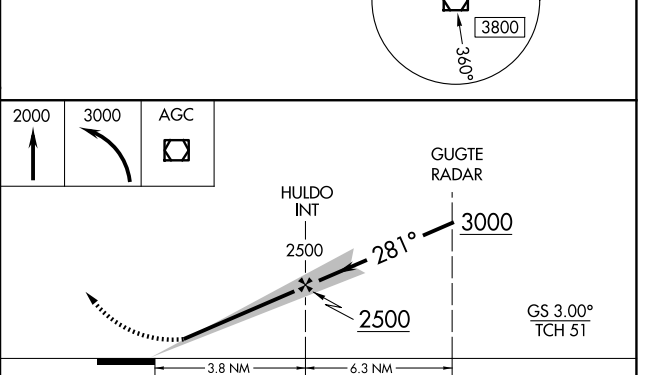
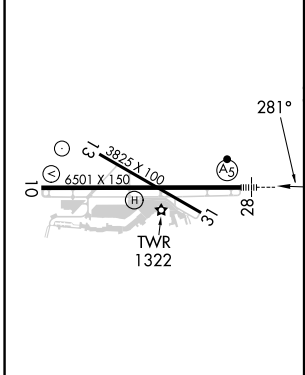
For inoperative MALSR, increase S-LOC Cats C and D visibility to RVR 6000. Circling Rwy 13 NA at night.	MALSR	MISSED APPROACH: Climb to 2000 then climbing left turn to 3000 direct AGC VOR/DME and hold, continue climb-in-hold to 3000.	
		ATIS <b>120.55</b>	PITTSBURGH APP CON <b>119.35 285.575</b>

ATIS <b>120.55</b>	PITTSBURGH APP CON <b>119.35 285.575</b>	ALLEGHENY TOWER <b>121.1 239.0</b>	GND CON <b>121.7</b>
-----------------------	---	---------------------------------------	-------------------------

**RADAR REQUIRED**



ELEV 1252	TDZE 1251
-----------	-----------



REIL Rwy 10, 13, and 31 HIRL Rwy 10-28 and 13-31	CATEGORY				
FAF to MAP 3.8 NM	A	B	C	D	
Knots	60	90	120	150	180
Min:Sec	3:48	2:32	1:54	1:31	1:16
<input checked="" type="checkbox"/> CIRCLING	1720-1	468 (500-1)	1660/40	409 (500-3/4)	
	1501/24		250 (300-1/2)		
	1660/24		409 (500-1/2)		
	1980-2		1980-2 1/4		
	728 (800-2)		728 (800-2 1/4)		

NE-4, 23 JAN 2025 to 20 FEB 2025

NE-4, 23 JAN 2025 to 20 FEB 2025