

# HI-TACAN RWY 10R

TACAN CBU Chan <b>29</b>	APCH CRS <b>111°</b>	Rwy ldg <b>11,000</b> TDZE <b>24</b> Arpt Elev <b>31</b>
-----------------------------	-------------------------	--

[USAF]

PORTLAND INTL (KPDX)

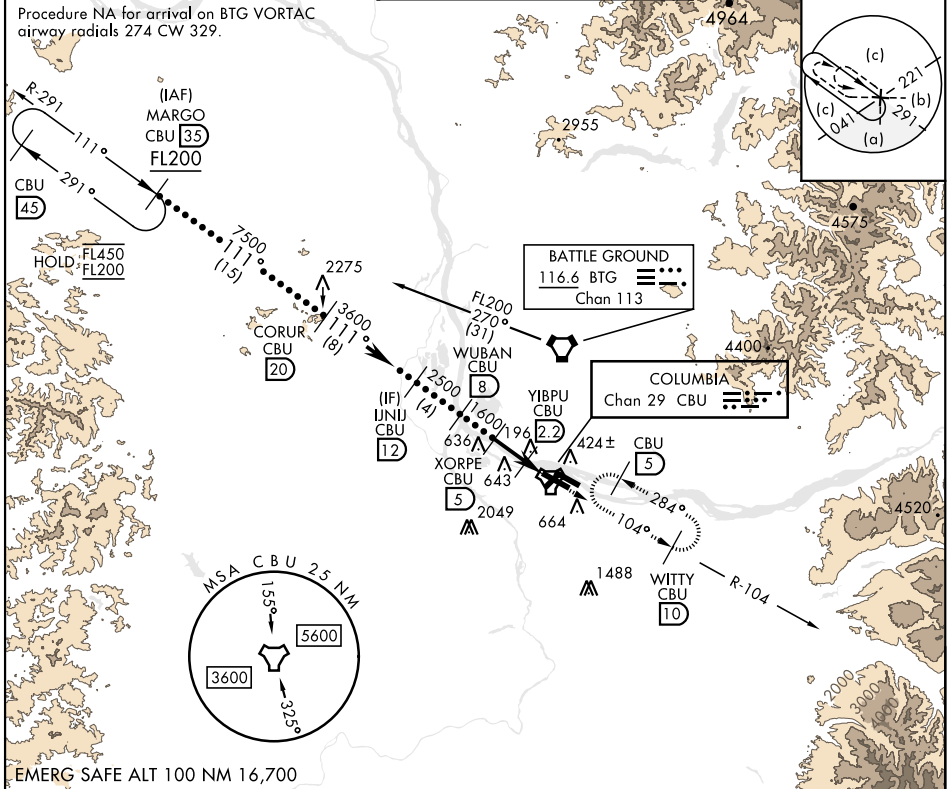
**▽** \* When ALS inop, increase CAT E vis to 1 1/4 miles.



**MISSED APPROACH:** Climb to 4000 on CBU TACAN R-104 to WITTY/CBU 10 DME and hold, continue climb-in-hold to 4000.

ATIS <b>128.35 269.9</b>	APP CON <b>118.1 284.6</b> (100°-279°) <b>124.35 299.2</b> (280°-099°)	TOWER <b>118.7 257.8</b> Rwy 10L-28R <b>123.775 251.125</b> Rwy 3-21, 10R-28L	GND CON <b>121.9 348.6</b>	CLNC DEL <b>120.125 318.1</b>
-----------------------------	--	---	-------------------------------	----------------------------------

Procedure NA for arrival on BTG VORTAC airway radials 274 CW 329.



NW-1, 23 JAN 2025 to 20 FEB 2025

NW-1, 23 JAN 2025 to 20 FEB 2025

VGSi and ILS glidepath not coincident (VGSi Angle 3.00/TCH 71) MARGO CBU 35 FL200 711° CORUR CBU 20 7500 UNJU CBU 12 3600 WUBAN CBU 8 2500 XORPE CBU 5 1600 YIBPU CBU 2.2 640 TACAN 0.6 3.21° TCH 71 4.4 NM		4000 CBU R-104 WITTY CBU 10	ELEV 31 TDZE 24 Rwy 10L ldg 8535' Rwy 28R ldg 9290'
CATEGORY	C	D	E
S-10R *	460/40	436	(500-34)
CIRCLING	1020-3 989	(1000-3)	1140-3 1109 (1200-3)
REIL Rwy 3, 21 TDZL/CL Rwy 10R MIRL Rwy 3-21 HIRL Rwy 10L-28R, 28L-10R			

# HI-TACAN RWY 10R