

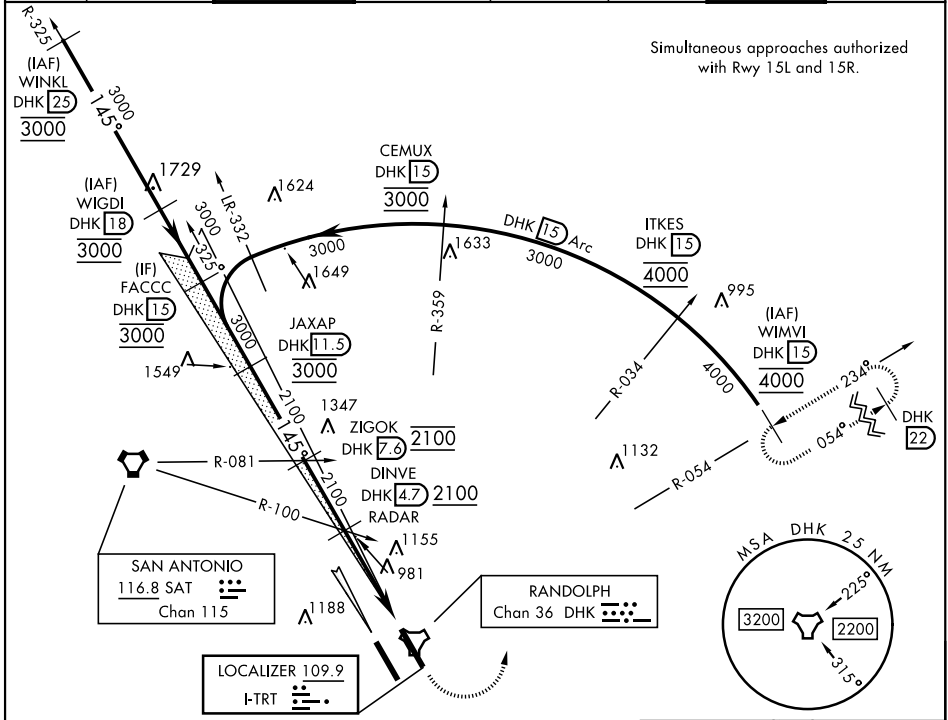
# ILS or LOC Y RWY 15L

LOC I-TRT <b>109.9</b>	APCH CRS <b>145°</b>	Rwy Idg TDZE Arpt Elev <b>8351</b> <b>742</b> <b>761</b>	[USAF]	RANDOLPH AFB (KRND)
---------------------------	-------------------------	---	--------	---------------------

RADAR or DME required		ALS-F1 <b>(A1)</b>	MISSED APPROACH: Climb to 1500, then climbing left turn heading 024° to 3000. Intercept DHK TACAN R-054 to WIMVI and hold.
-----------------------	--	-----------------------	--

\* When ALS inop, increase CAT AB RVR to 55, vis to 1 mile; CAT CDE to 1 3/8 miles.  
\*\* Circling not authorized SW of Rwy 15L-33R.

ATIS ★	SAN ANTONIO APP CON	TOWER ★	GND CON	CLNC DEL (RWY 15L-33R)	HANGOVER ATIS ★	HANGOVER TOWER ★	HANGOVER GND CON
<b>290.525</b>	<b>128.05 318.1</b>	<b>128.25 294.7</b>	<b>119.65 275.8</b>	<b>338.35</b>	<b>327.8</b>	<b>120.5 291.1</b>	<b>124.75 353.75</b>

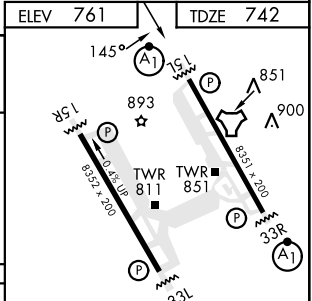
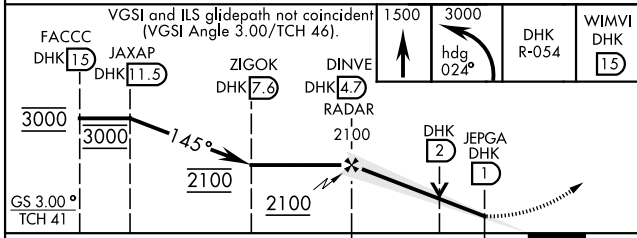


Simultaneous approaches authorized with Rwy 15L and 15R.

SC-3, 23 JAN 2025 to 20 FEB 2025

SC-3, 23 JAN 2025 to 20 FEB 2025

EMERG SAFE ALT 100 NM 4100	ELEV 761	TDZE 742
----------------------------	----------	----------



CATEGORY	A	B	C	D	E
S-ILS 15L	942/40		200	(200-3/4)	
S-LOC 15L *	1260/40	518 (500-3/4)	1260-1 1/4	518	(500-1 1/4)
CIRCLING **	1260-1	499 (500-1)	1260-1 1/2 499 (500-1 1/2)	1800-3	1039 (1100-3)

HIRL all rwys ALS Rwy 15L nstd len 2100'					
FAF to MAP 3.7 NM					
Knots	60	90	120	150	180
Min:Sec	3:42	2:28	1:51	1:29	1:14

# ILS or LOC Y RWY 15L