

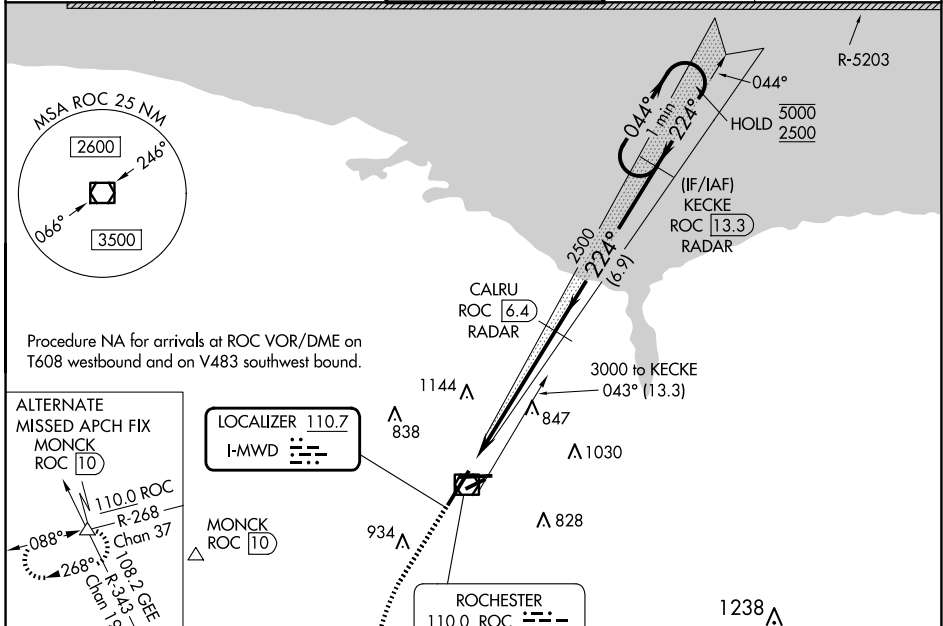
LOC I-MWD 110.7	APP CRS 224°	Rwy Idg 8001
		TDZE 559
		Apt Elev 559

ILS or LOC RWY 22

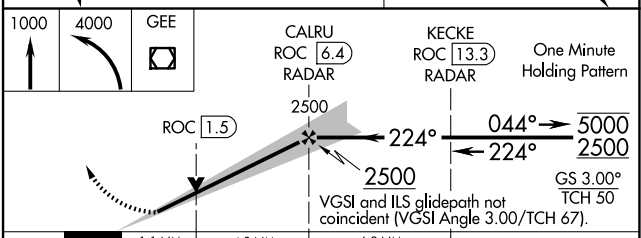
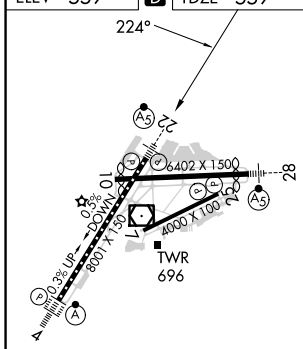
FREDERICK DOUGLASS/GREATER ROCHESTER INTL (ROC)

DME or RADAR required.		MALSR 	MISSED APPROACH: Climb to 1000 then climbing left turn to 4000 direct GEE VOR/DME and hold.	
<p> When R-5203 active hold in lieu NA. DME from ROC VOR/DME.</p> <p> DME use requires simultaneous reception of I-MWD and ROC DME.</p> <p>* RVR 1800 authorized with use of FD or AP or HUD to DA.</p>				

ATIS 124.825	ROCHESTER APP CON 119.55 269.6	ROCHESTER TOWER 118.3 254.3	GND CON 121.7	CLNC DEL 118.8 343.65
------------------------	--	---------------------------------------	-------------------------	---------------------------------



ELEV 559	D	TDZE 559
----------	----------	----------



CATEGORY	A	B	C	D
S-ILS 22 *	759/24 200 (200-1/2)			
S-LOC 22	980/24	421 (500-1/2)	980/40	421 (500-3/4)
CIRCLING	1060-1 501 (600-1)		1460-2 3/4 901 (1000-2 3/4)	1460-3 901 (1000-3)

NE-2, 23 JAN 2025 to 20 FEB 2025

NE-2, 23 JAN 2025 to 20 FEB 2025