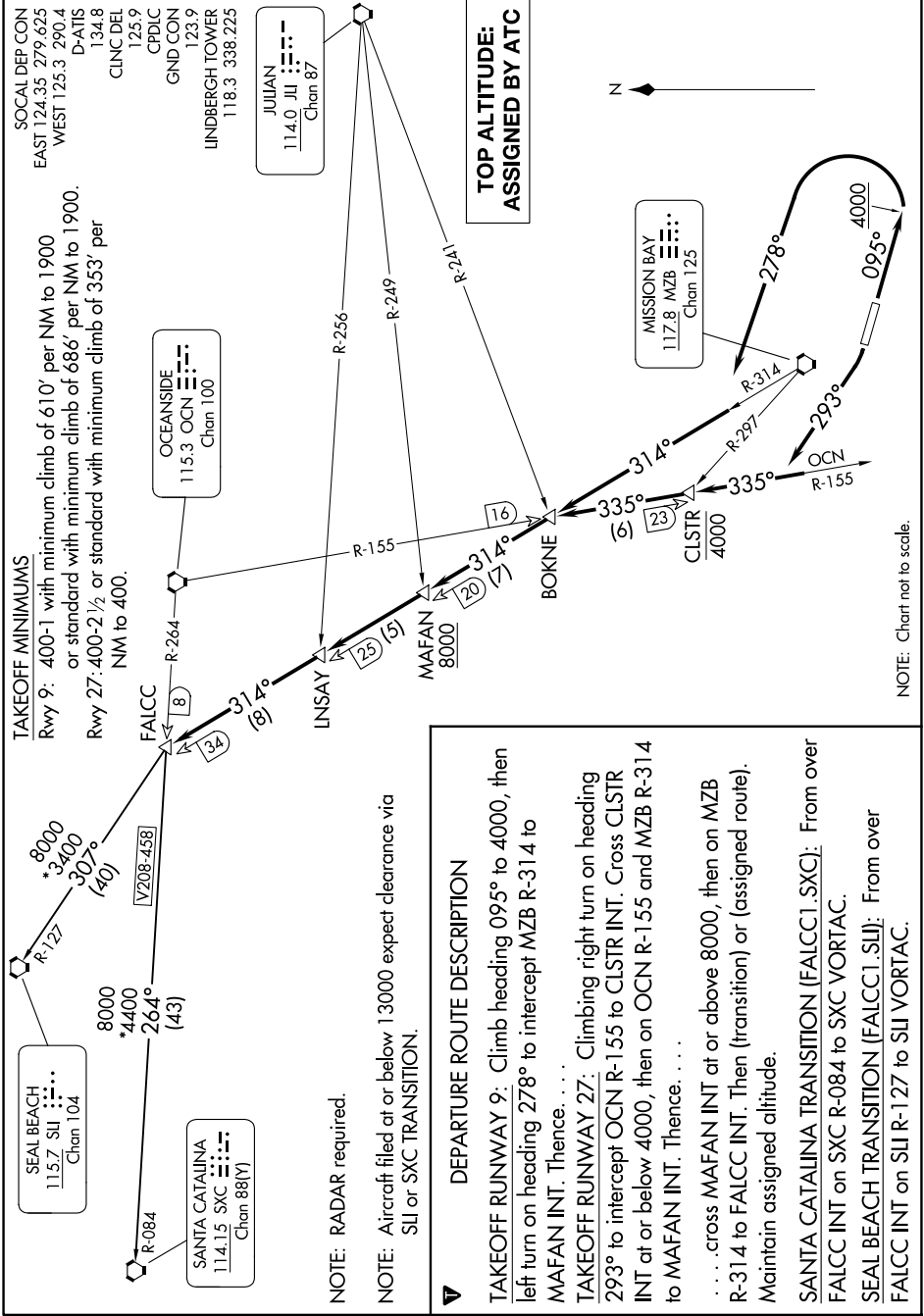


FALCC ONE DEPARTURE

AL-373 (FAA)

SAN DIEGO INTL (SAN)
SAN DIEGO, CALIFORNIA

SW-3, 23 JAN 2025 to 20 FEB 2025

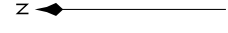


TAKEOFF MINIMUMS
Rwy 9: 400-1 with minimum climb of 610' per NM to 1900 or standard with minimum climb of 686' per NM to 1900.
Rwy 27: 400-2 1/2 or standard with minimum climb of 353' per NM to 400.

SOCAL DEP CON
EAST 124.35 279.625
WEST 125.3 290.4
D-ATIS 134.8
CLNC DEL 125.9
CPDIC 123.9
GND CON 118.3 338.225
LINDBERGH TOWER 118.3 338.225

JULIAN
114.0 JII
Chan 87

**TOP ALTITUDE:
ASSIGNED BY ATC**



MISSION BAY
117.8 MZB
Chan 125

NOTE: RADAR required.
NOTE: Aircraft filed at or below 13000 expect clearance via SII or SXC TRANSITION.

DEPARTURE ROUTE DESCRIPTION
TAKEOFF RUNWAY 9: Climb heading 095° to 4000, then left turn on heading 278° to intercept MZB R-314 to MAFAN INT. Thence...
TAKEOFF RUNWAY 27: Climbing right turn on heading 293° to intercept OCN R-155 to CLSTR INT. Cross CLSTR INT at or below 4000, then on OCN R-155 and MZB R-314 to MAFAN INT. Thence...
... cross MAFAN INT at or above 8000, then on MZB R-314 to FALCC INT. Then (transition) or (assigned route). Maintain assigned altitude.
SANTA CATALINA TRANSITION (FALCC1.SXC): From over FALCC INT on SXC R-084 to SXC VORTAC.
SEAL BEACH TRANSITION (FALCC1.SII): From over FALCC INT on SII R-127 to SII VORTAC.

NOTE: Chart not to scale.

SW-3, 23 JAN 2025 to 20 FEB 2025

FALCC ONE DEPARTURE