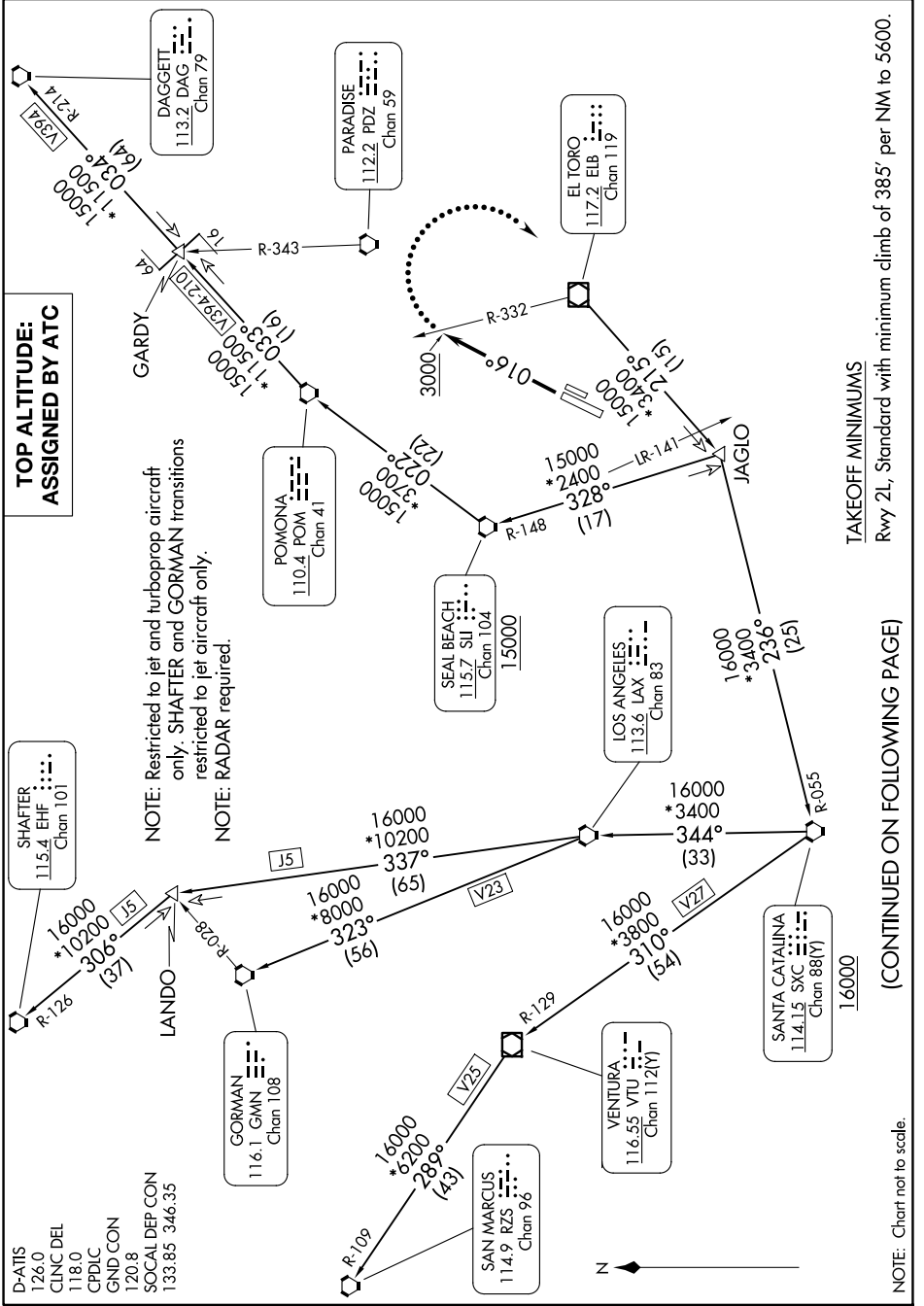


IRVINE FIVE DEPARTURE

SW-3, 23 JAN 2025 to 20 FEB 2025



(CONTINUED ON FOLLOWING PAGE)

TAKEOFF MINIMUMS
Rwy 2L, Standard with minimum climb of 385' per NM to 5600.

NOTE: Chart not to scale.

SW-3, 23 JAN 2025 to 20 FEB 2025