

| | | | |
|-------------------------|------------------------|---------------------------|-------------|
| WAAS CH 90114 | APP CRS 097° | Rwy Idg TDZE 30 | 9351 |
| W10A | | Apt Elev 50 | |


RNAV (GPS) RWY 10

SAVANNAH/HILTON HEAD INTL (SAV)

RNP APCH-GPS

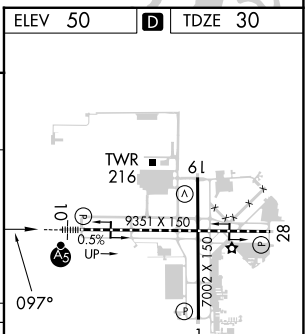
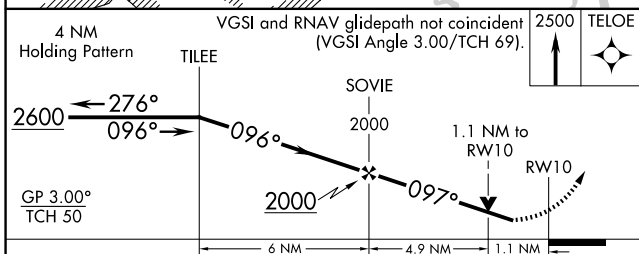
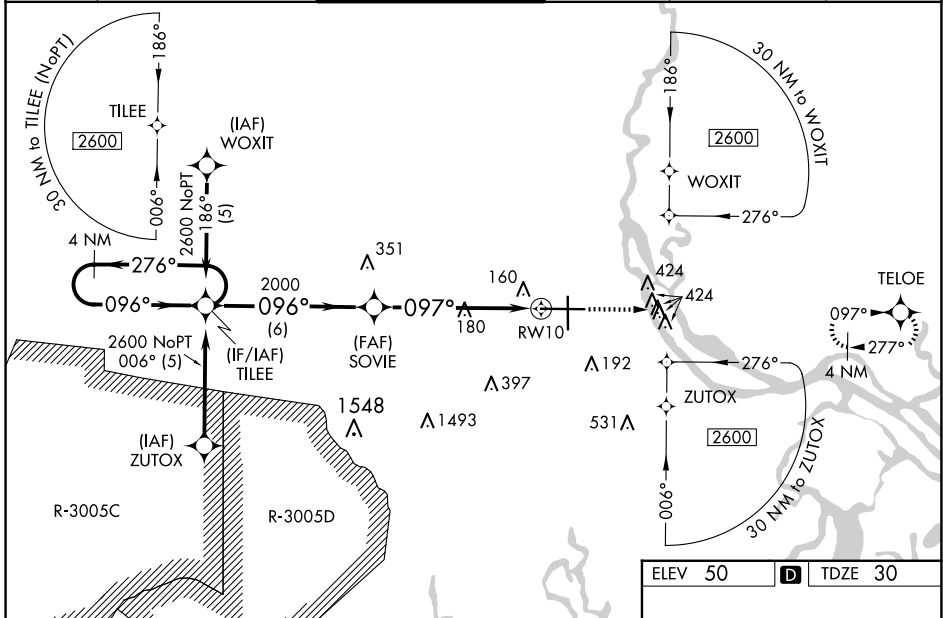
▼ For inop ALS increase LNAV/VNAV all Cats visibility to 1½ SM, increase LNAV Cat C/D to RVR 6000. For uncompensated Baro-VNAV systems, LNAV/VNAV NA below -15°C or above 54°C. When local altimeter setting not received, use Hilton Head Island altimeter setting and increase LPV DA to 296 feet and all visibilities to RVR 2000, increase LNAV/VNAV DA to 596 feet and all visibilities to 1½ SM, increase all MDAs 80 feet and LNAV Cat C/D visibility to RVR 5000. For inop ALS when using Hilton Head Island altimeter setting, LNAV/VNAV all Cats visibility to 1½ SM, increase LNAV Cat C/D visibility to 1½ SM. VDP and Baro-VNAV NA when using Hilton Head Island altimeter setting.

MALS



MISSED APPROACH:
Climb to 2500 direct
TELOE and hold.

| | | | | | |
|-----------------------|---|--|-------------------------------|-----------------------------------|-------------------------|
| ATIS 123.75 | SAVANNAH APP CON* 125.3 371.875 | SAVANNAH TOWER* 125.975 (CTAF) 257.8 | GND CON 121.9 348.6 | CLNC DEL 119.55 291.775 | UNICOM 122.95 |
|-----------------------|---|--|-------------------------------|-----------------------------------|-------------------------|



| CATEGORY | A | B | C | D |
|--------------|--------|-------------|----------------------|------------------------|
| LPV DA | 230/18 | | 200 (200-½) | |
| LNAV/VNAV DA | 530/50 | | 500 (500-1) | |
| LNAV MDA | 440/24 | 410 (400-½) | 440/40 | 410 (400-¾) |
| CIRCLING | 520-1 | 470 (500-1) | 740-2 690 (700-2) | 740-2¼ 690 (700-2¼) |

TDZ/CL Rwy 10
REIL Rwy 19 and 28
HIRL Rwy 1-19 and 10-28

SE-4, 23 JAN 2025 to 20 FEB 2025

SE-4, 23 JAN 2025 to 20 FEB 2025