

RNAV (GPS) RWY 10

APCH CRS	Rwy ldg	11,393
096°	TDZE	26
	Arprt Elev	41

[USA]

HUNTER AAF (KSVN)

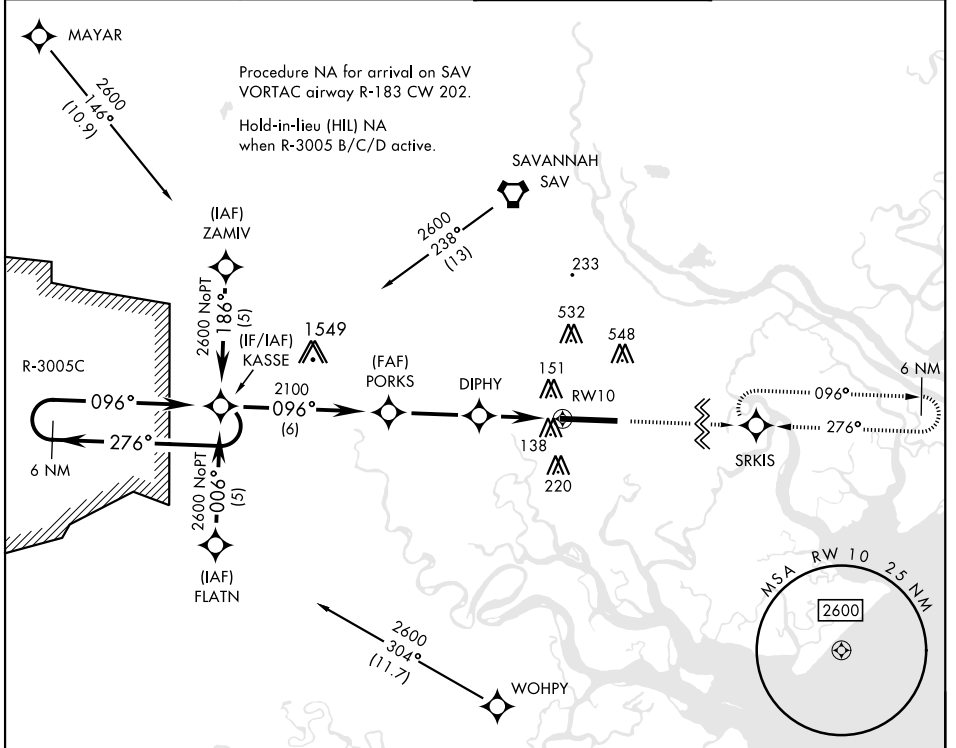
RNP APCH-GPS

RADAR required when R-3005 B/C/D active.
 *When ALS inop, increase CAT AB vis to 1 mile;
 CAT CD vis to 1¼ miles.
 **Circling not authorized N of Rwy 10-28 for CAT D.

B

MISSED APPROACH: Climb to 2500 direct SRKIS and hold.

ATIS*	SAVANNAH APP CON*	TOWER*	GND CON*
127.525 323.125	120.4 353.775	124.975 (CTAF) 0 279.575	121.8 291.675



SE-4, 23 JAN 2025 to 20 FEB 2025

SE-4, 23 JAN 2025 to 20 FEB 2025

 6 NM Holding Pattern KASSE PORKS DIPHY 3 NM to RWY10 RWY10 3.05 TCH 55 1.1 NM to RWY10 3.3 NM 3 NM	2500	SRKIS	ELEV	41	TDZE	26
CATEGORY	A	B	C	D		
LNAV MDA*	460-1	434	(500-1)			
CIRCLING**	600-1	559 (600-1)	920-2½ 879 (900-2½)	920-2¾ 879 (900-2¾)		

REIL Rwy 10
 HIRL Rwy 10-28

RNAV (GPS) RWY 10