

RNAV (GPS) RWY 28

WAAS CH 82111 W28A	APCH CRS 276°	Rwy Idg 11,393 TDZE 41 Arprt Elev 41
--	-------------------------	---

[USA]

HUNTER AAF (KSVN)

RNP APCH-GPS

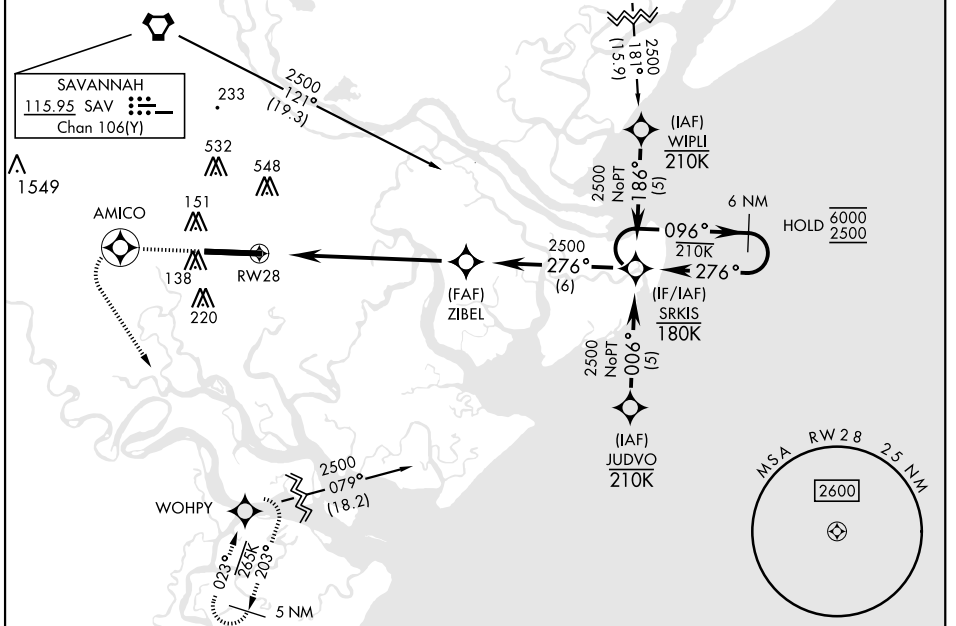
▼ *When ALS inop, increase RVR to 40, vis to ¾ mile.
 ** When ALS inop, increase vis 1½ miles.
 *** When ALS inop, increase CAT AB RVR to 55, vis to 1 mile;
 CAT CD vis to 1¾ miles.
 **** Circling not authorized N of Rwy 10-28 for CAT D.



MISSED APPROACH: Climb to 2000 direct AMICO and left turn on track 180° to WOHPY and hold.

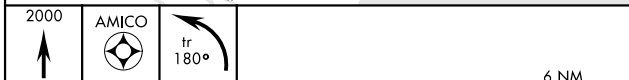
ATIS ★ 127.525 323.125	SAVANNAH APP CON ★ 120.4 353.775	TOWER ★ 124.975 (CTAF) 0 279.575	GND CON ★ 121.8 291.675
----------------------------------	--	--	-----------------------------------

For uncompensated Baro-VNAV systems, LNAV/VNAV NA below -15°C (5°F) or above 49°C (120°F)

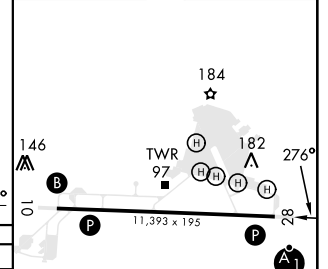
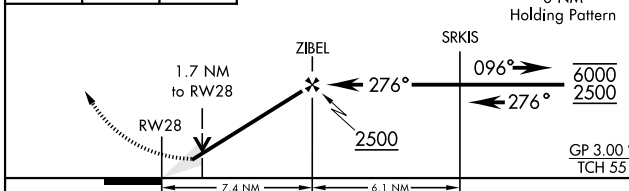


SE-4, 23 JAN 2025 to 20 FEB 2025

SE-4, 23 JAN 2025 to 20 FEB 2025



ELEV 41	TDZE 41
---------	---------



CATEGORY	A	B	C	D
LPV DA*	241/24		200 (200-½)	
LNAV/** VNAV DA	487/45		446 (500-¾)	
LNAV MDA***	620/24	579 (600-½)	620-1¼ 579 (600-1¼)	
CIRCLING****	620-1	579 (600-1)	920-2½ 879 (900-2½)	920-2¾ 879 (900-2¾)

HIRL Rwy 10-28
 REIL Rwy 10

RNAV (GPS) RWY 28