

# VOR RWY 28

SVN VOR/DME <b>111.6</b> Chan <b>53</b>	APCH CRS <b>282°</b>	Rwy Idg <b>11,393</b> TDZE <b>41</b> Arprt Elev <b>41</b>
---	-------------------------	---

[USA]

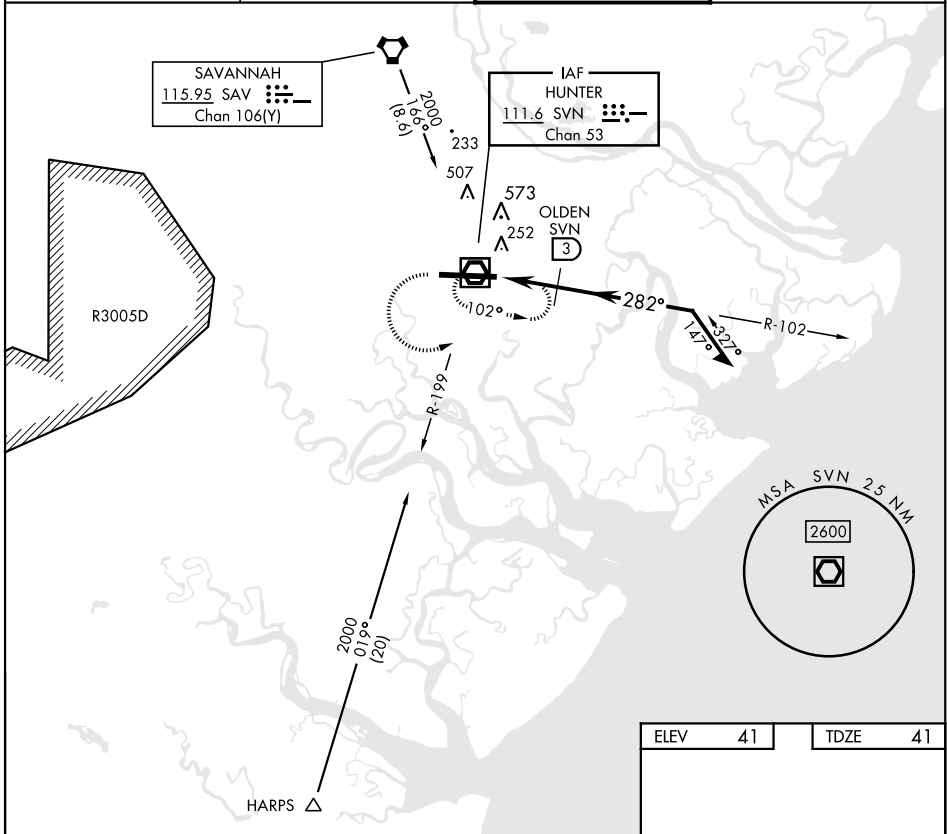
HUNTER AAF (KSVN)

▼ \* When ALS inop, increase CAT AB RVR to 55, vis to 1 mile; CAT CD vis to 1½ miles.  
\*\*Circling not authorized N of Rwy 10-28 for CAT D.



MISSED APPROACH: Climb to 2000 then climbing left turn to 2000 direct SVN VOR/DME and hold.

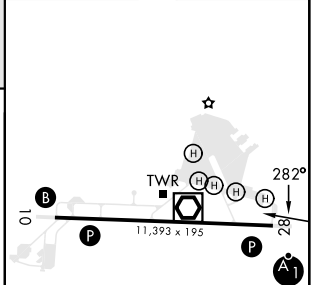
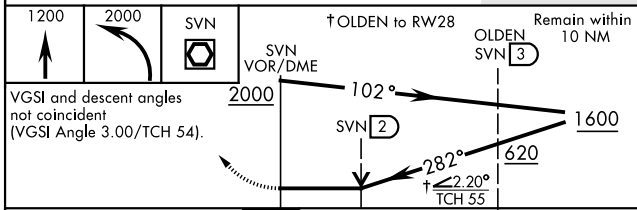
ATIS ★ <b>127.525 323.125</b>	SAVANNAH APP CON ★ <b>120.4 353.775</b>	TOWER ★ <b>124.975</b> (CTAF) <b>0 279.575</b>	GND CON ★ <b>121.8 291.675</b>
----------------------------------	--	---	-----------------------------------



SE-4, 23 JAN 2025 to 20 FEB 2025

SE-4, 23 JAN 2025 to 20 FEB 2025

ELEV	41	TDZE	41
------	----	------	----



CATEGORY	A	B	C	D
S-28 *	580/24 539 (600-½)	580/55 539 (600-1)		
** CIRCLING	600-1 559 (600-1)	920-2½ 879 (900-2½)	920-2¾ 879 (900-2¾)	

REIL Rwy 10   
HIRL Rwy 10-28

# VOR RWY 28