

VOR/DME RWY 28

| | | |
|---|-------------------------|--|
| VOR/DME SVN 111.6 Chan 53 | APCH CRS 282° | Rwy Idg 11,393 TDZE 41 Arpt Elev 41 |
|---|-------------------------|--|

[USA]

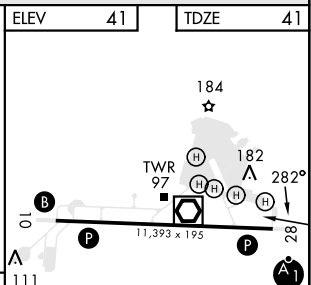
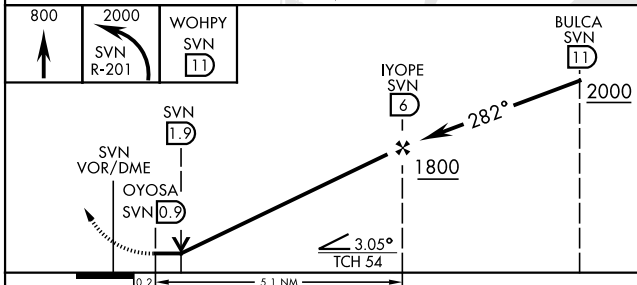
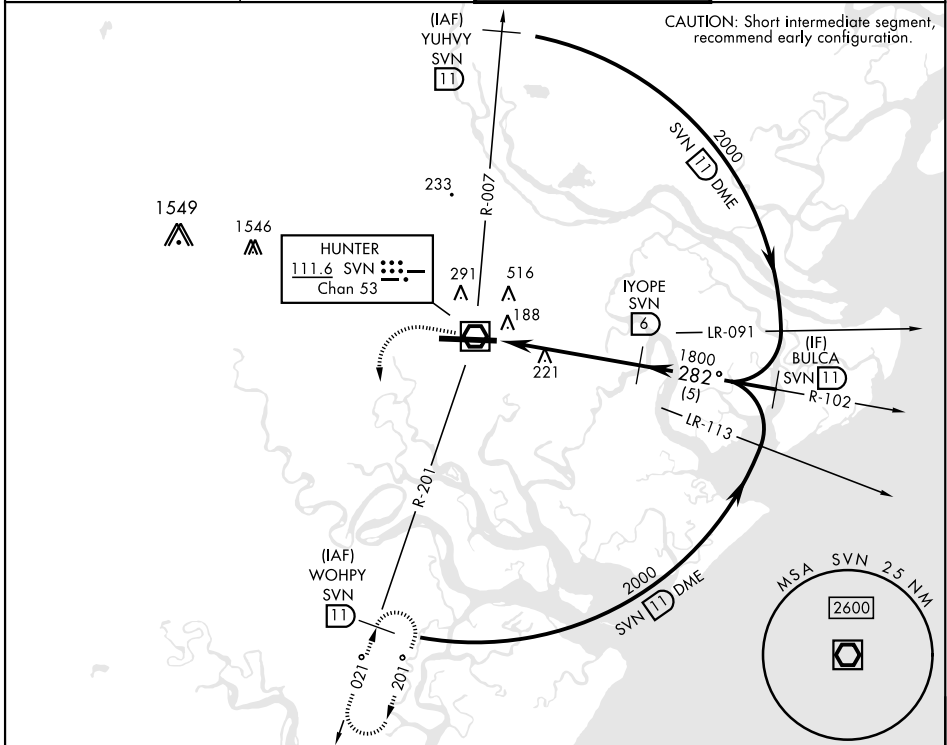
HUNTER AAF (KSVN)

▲ *When ALS inop, increase CAT AB RVR to 55, vis to 1 mile; CAT CD vis to 1½ miles.
** Circling not authorized N of Rwy 10-28 for CAT D.



ALSF-1 

MISSED APPROACH: Climb to 800, then climbing left turn to 2000 via SVN VOR/DME R-201 to WOHPY/11 DME and hold.

| | | | |
|----------------------------------|--|--|-----------------------------------|
| ATIS ★ 127.525 323.125 | SAVANNAH APP CON ★ 120.4 353.775 | TOWER ★ 124.975 (CTAF) 0 279.575 | GND CON ★ 121.8 291.675 |
|----------------------------------|--|--|-----------------------------------|



| CATEGORY | A | B | C | D |
|------------|--------------------|---|---------------------|---------------------|
| S-28* | 580/24 539 (600-½) | | 580/55 539 (600-1) | |
| CIRCLING** | 600-1 559 (600-1) | | 920-2½ 879 (900-2½) | 920-2¾ 879 (900-2¾) |

HIRL Rwy 10-28 
REL Rwy 10 

VOR/DME RWY 28

SE-4, 23 JAN 2025 to 20 FEB 2025

SE-4, 23 JAN 2025 to 20 FEB 2025