


LOC/DME I-SUX <b>109.3</b> Chan <b>30</b>	APP CRS <b>313°</b>	Rwy Idg TDZE Apt Elev	<b>9002</b> <b>1096</b> <b>1098</b>
---	------------------------	-----------------------------	---

# ILS or LOC RWY 31

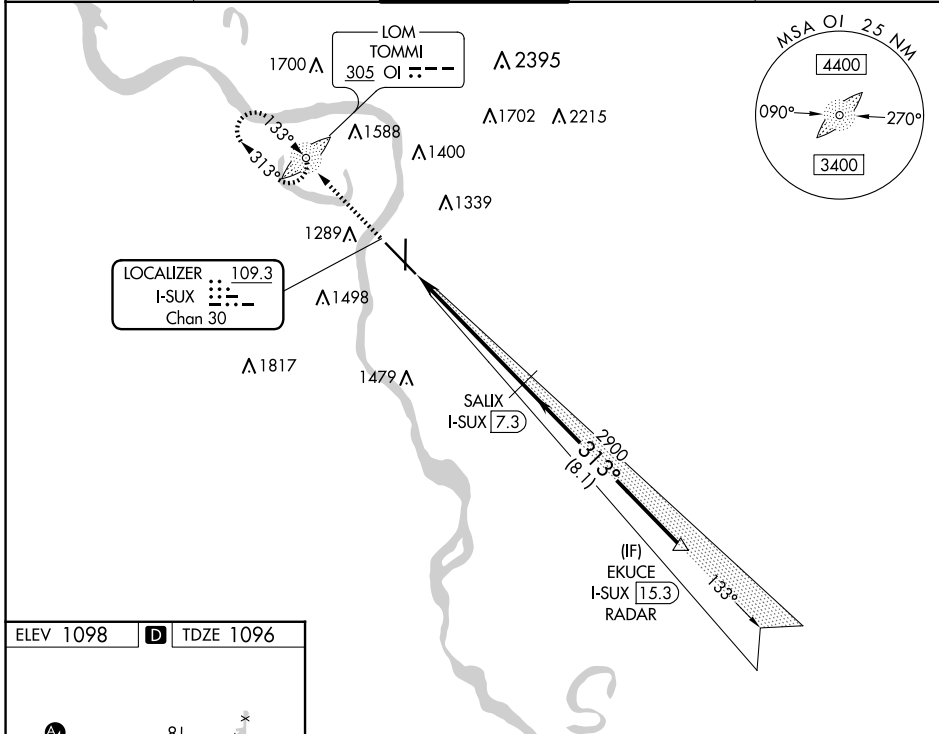
SIoux GATEWAY/BRIG GENERAL BUD DAY FLD (SUX)

ADF required. DME required for LOC only. RADAR required for procedure entry.

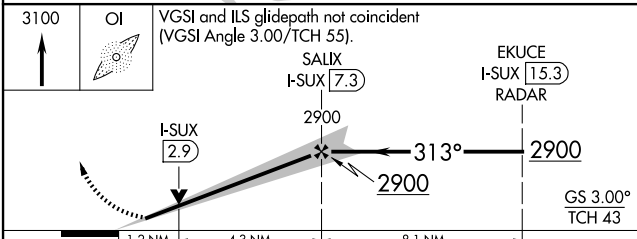
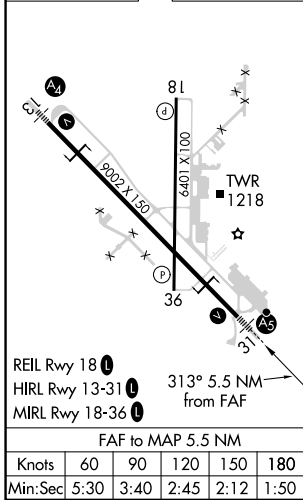
**⚠** Autopilot coupled approach NA below 2025 MSL. For inop ALS, increase S-ILS 31 Cat E visibility to RVR 4000 and S-LOC 31 Cat E to 1½ SM. \*RVR 1800 authorized with use of FD or AP or HUD to DA.

MALSR  MISSED APPROACH: Climb to 3100 direct TOMMI LOM and hold, continue climb-in-hold to 3100.

ATIS <b>119.45 270.8</b>	SIoux CITY APP CON * <b>124.6 307.0</b>	SIoux CITY TOWER * <b>118.7 (CTAF) 0 254.3</b>	GND CON <b>121.9 348.6</b>	UNICOM <b>122.95</b>
-----------------------------	--	---	-------------------------------	-------------------------



ELEV 1098 **D** TDZE 1096



CATEGORY	A	B	C	D	E
S-ILS 31*	1296/24 200 (200-½)				
S-LOC 31	1540/24	444 (500-½)	1540/45 444 (500-¾)		
<b>C</b> CIRCLING	1640-1 542 (600-1)	1700-1 602 (700-1)	1700-1¾ 602 (700-1¾)	1860-2½ 762 (800-2½)	1940-3 842 (900-3)

NC-3, 23 JAN 2025 to 20 FEB 2025

NC-3, 23 JAN 2025 to 20 FEB 2025