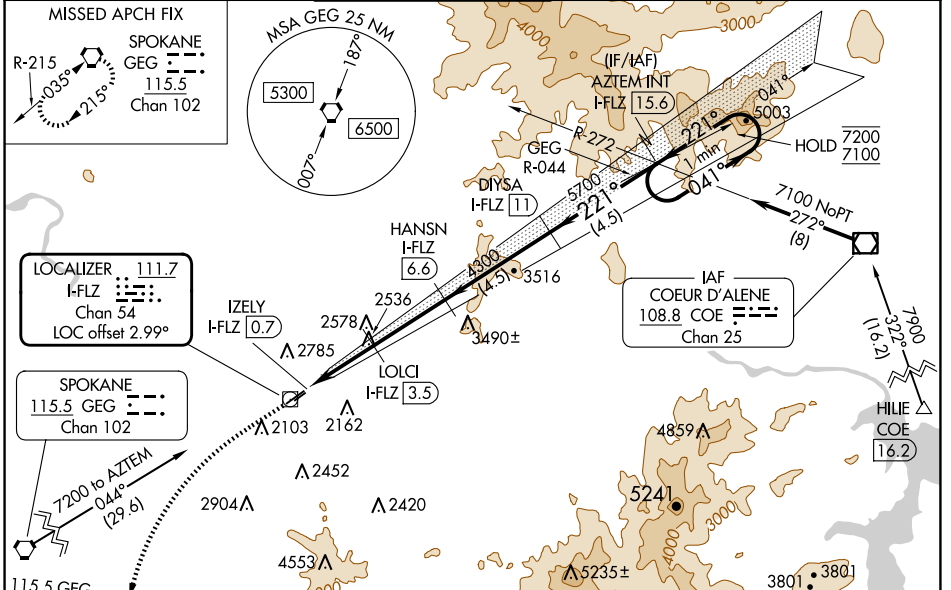


LOC/DME I-FLZ	APP CRS	Rwy Idg	4499
111.7	221°	TDZE	1957
Chan 54		Apt Elev	1957

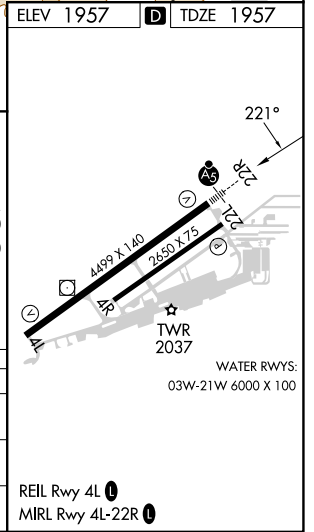
ILS or LOC RWY 22R

FELTS FLD (S/F)

DME required.		MALSR		MISSED APPROACH: Climb to 3300 then climbing left turn to 5000 on heading 200° and GEG VORTAC R-080 to GEG VORTAC and hold.	
<p>▼ Circling NA northwest of Rwy 4L-22R. Circling Rwy 22L NA at night.</p> <p>⚠ Rwy 22R helicopter visibility reduction below 3/4 SM NA. For inop ALS, increase S-ILS Cat A/B/C visibility to 7/8 SM, increase S-LOC Cat A visibility to 1 SM and Cat C visibility to 2 1/2 SM.</p> <p>❄ -16°C</p>					
ATIS	SPOKANE APP CON	FELTS TOWER ★	GND CON	CLNC DEL	UNICOM
120.55	133.35 263.0	132.5 (CTAF) 239.025	121.7	121.7	122.95



ELEV 1957		TDZE 1957	
3300	5000	GEG	AZTEM INT I-FLZ 15.6
hdg 200°	R-080	HANSN I-FLZ 6.6	One Minute Holding Pattern
LOLCI I-FLZ 3.5	DIYSA I-FLZ 11	LOLCI I-FLZ 3.5	041° → 7200
IZELY I-FLZ 2.7		IZELY I-FLZ 0.7	← 221° 7100
3140		4300	GS 3.60° TCH 43
0.1		2	0.8
3 NM		4.5 NM	4.5 NM
CATEGORY	A	B	C
S-ILS 22R	2257-1/2 300 (300-1/2)		NA
S-LOC 22R	2800-3/4	843 (900-3/4)	2800-1/8 843 (900-1/8)
CIRCLING	2800-1 1/4 843 (900-1 1/4)	2800-1 1/2 843 (900-1 1/2)	3100-3 1143 (1200-3)



NW-1, 23 JAN 2025 to 20 FEB 2025

NW-1, 23 JAN 2025 to 20 FEB 2025