

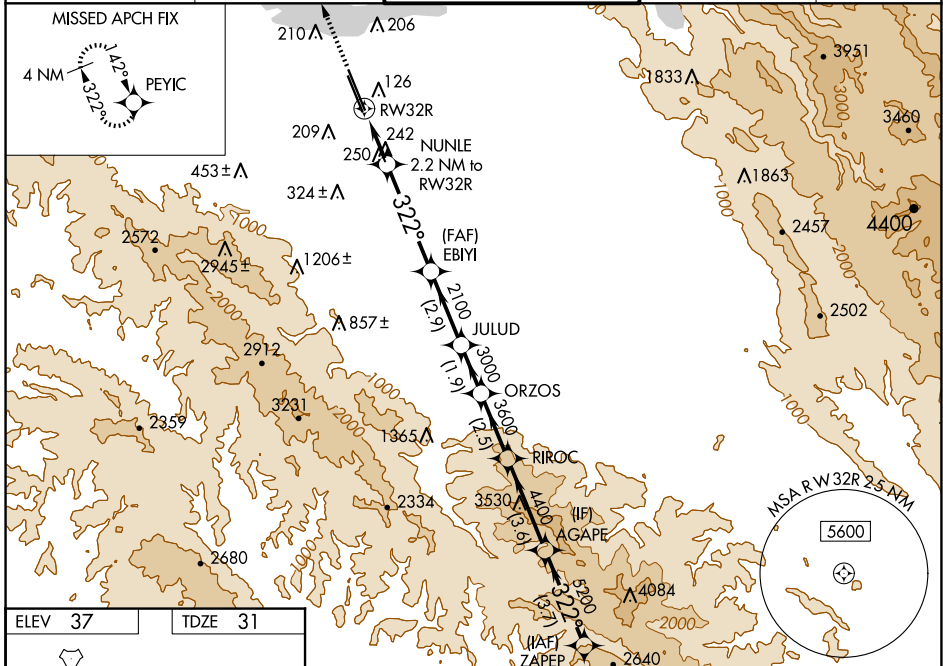
WAAS CH 53343	APP CRS 322°	Rwy Idg TDZE Apt Elev	9006 31 37
-------------------------	------------------------	-----------------------------	---------------------------------------

RNAV (GPS) RWY 32R

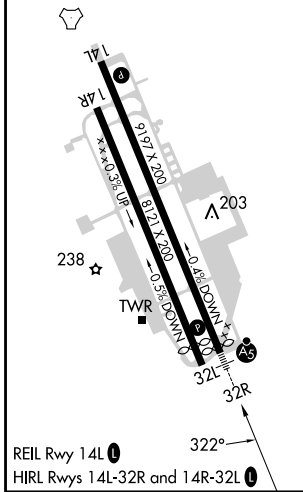
MOFFETT FEDERAL AIRFIELD (NUQ)

RNP APCH - GPS.	MALSR 	MISSED APPROACH: Climb to 3200 direct PEYIC and hold.
<p>▼ For uncompensated Baro-VNAV systems, LNAV/VNAV NA below -15°C or above 54°C. Rwy 32R helicopter visibility reduction below 3/4 SM NA. ▲ For inop ALS increase LPV all Cats visibility to 1 1/4 SM, LNAV/VNAV all Cats visibility to 1 3/8 SM and LNAV Cats A/B to 1 SM and Cats C/D visibility to 1 3/8 SM.</p>		

ATIS 124.175 283.0	NORCAL APP CON 120.1 290.25	MOFFETT TOWER* 119.55 (CTAF) 259.65	GND CON 121.85 278.95	CLNC DEL 296.75
------------------------------	---------------------------------------	--	---------------------------------	---------------------------



ELEV 37	TDZE 31
---------	---------



	3200 PEYIC	NUNLE 2.2 NM to RW32R	EBIYI 2100	JULUD 3000	ORZOS 3600	RIROC 4400	AGAPE 5200	ZAPEP 5500
		1.3 NM to RW32R	1.3 NM to RW32R					
		780	2100					
		1.3	0.9	4.1 NM	2.9 NM	1.9 NM	2.5 NM	3.6 NM
								GP 3.00° TCH 57
CATEGORY	A	B	C	D				
LPV DA		452-3/4	421 (500-3/4)					
LNAV/VNAV DA		493-1	462 (500-1)					
LNAV MDA	500-3/4	469 (500-3/4)	500-1	469 (500-1)				
C CIRCLING	540-1 503 (600-1)	600-1 563 (600-1)	620-1 1/2 583 (600-1 1/2)	780-2 1/2 743 (800-2 1/2)				

SW-2, 23 JAN 2025 to 20 FEB 2025

SW-2, 23 JAN 2025 to 20 FEB 2025