

WAAS CH <b>63220</b> <b>W36A</b>	APP CRS <b>344°</b>	Rwy Idg <b>2311</b> TDZE <b>7</b> Apt Elev <b>7</b>
--	------------------------	---

# RNAV (GPS) RWY 36

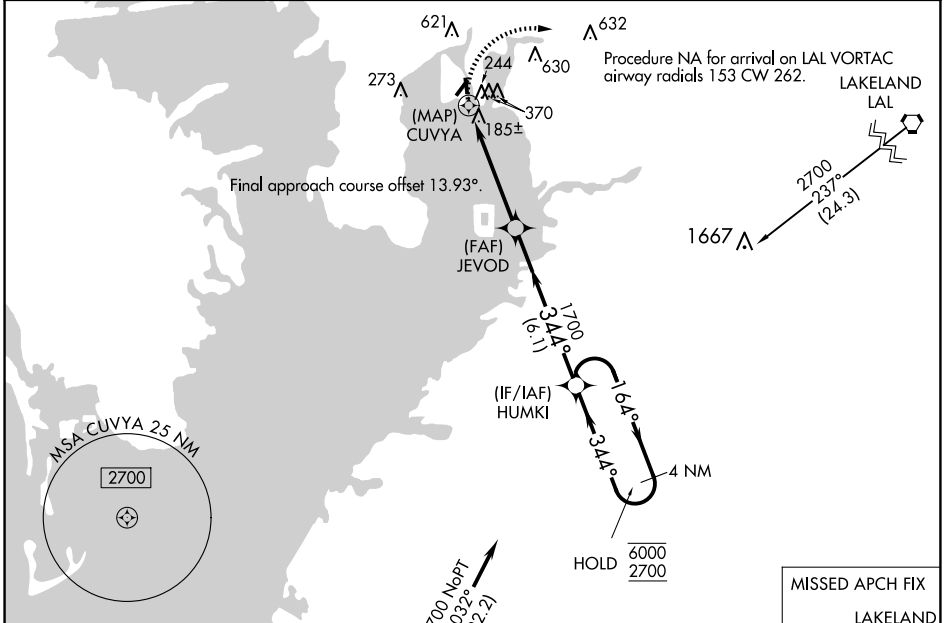
PETER O KNIGHT (TPF)

RNP APCH.

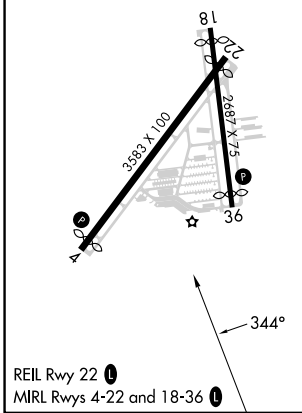
⚠ Circling NA northwest of Rwy 4-22. Procedure NA at night. Rwy 36 helicopter visibility reduction below 1 SM NA. When local altimeter setting not received, use Tampa Intl altimeter setting and increase all MDA 20 feet. Circling NA to Rwy 18.

MISSED APPROACH: Climbing right turn to 2700 direct LAL VORTAC and hold.

AWOS-3 <b>118.925</b>	TAMPA APP CON <b>119.9 290.3</b>	CLNC DEL <b>119.8</b>	UNICOM <b>122.725 (CTAF)</b> <b>0</b>
--------------------------	-------------------------------------	--------------------------	--

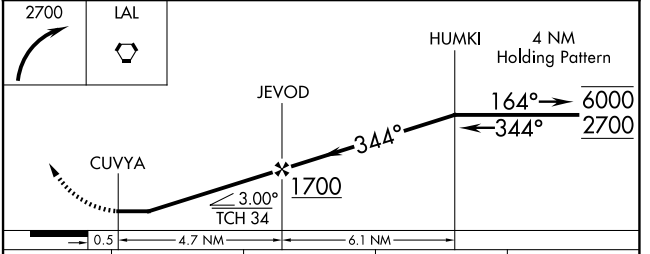


ELEV <b>7</b>	<b>D</b>	TDZE <b>7</b>
---------------	----------	---------------



(IAF) SARASOTA SRQ Procedure NA for arrivals at SRQ VOR/DME on V579 southbound.

MISSED APCH FIX LAKELAND LAL 4 NM



CATEGORY	A	B	C	D
LP MDA	440-1	433 (500-1)		NA
LNAV MDA	500-1	493 (500-1)		NA
<b>C</b> CIRCLING	720-1	713 (800-1)		NA

SE-3, 23 JAN 2025 to 20 FEB 2025

SE-3, 23 JAN 2025 to 20 FEB 2025