

|                           |                        |                         |                     |
|---------------------------|------------------------|-------------------------|---------------------|
| LOC I-TRI<br><b>109.9</b> | APP CRS<br><b>230°</b> | Rwy ldg<br><b>8000</b>  | TDZE<br><b>1518</b> |
|                           |                        | Apt Elev<br><b>1519</b> |                     |

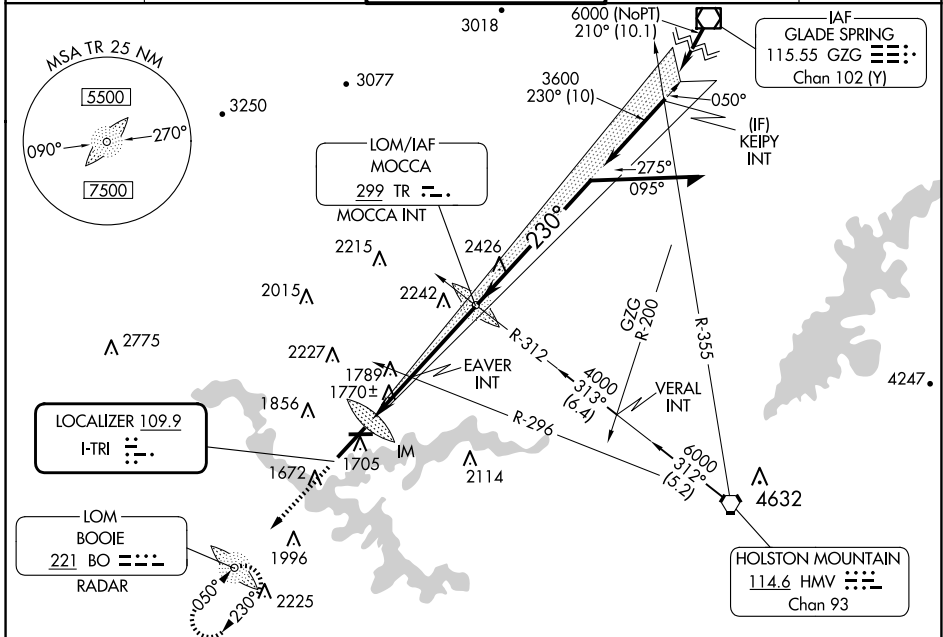
# ILS or LOC RWY 23

TRI-CITIES (TRI)

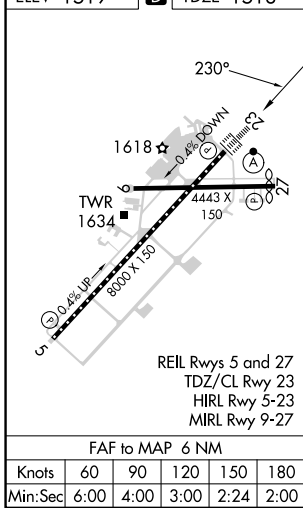
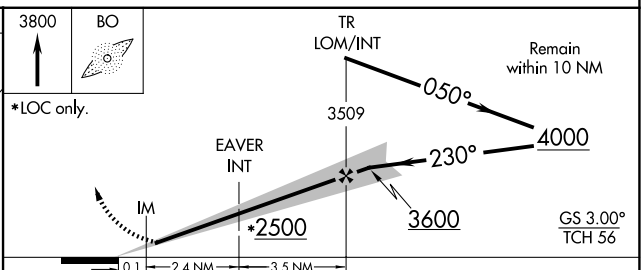
ADF or RADAR required.

**⚠** Circling to Rwy 9 NA at night. Circling NA northwest of Rws 9 and 23. CAUTION: Air traffic control tower 1634 feet MSL located 940 feet right of runway centerline 357 feet from runway threshold. When control tower closed: S-ILS 23 increase visibilities to RVR 4000 all Cats and S-LOC 23 increase visibilities 1/2 SM all Cats.

|                       |   |   |                               |                         |
|-----------------------|---|---|-------------------------------|-------------------------|
| ALSIF-2<br><b>(A)</b> | MISSED APPROACH: Climb to 3800 direct BOOIE LOM/RADAR and hold. |   |                               |                         |
| ATIS<br><b>118.25</b> | TRI-CITY APP CON ★<br><b>134.425 349.0</b>                      | TRI-CITY TOWER ★<br><b>119.5 (CTAF) 257.8</b> | GND CON<br><b>121.7 348.6</b> | UNICOM<br><b>122.95</b> |



|           |          |           |
|-----------|----------|-----------|
| ELEV 1519 | <b>D</b> | TDZE 1518 |
|-----------|----------|-----------|



| CATEGORY   | A                              | B                              | C                             | D                      |
|--|--------------------------------|--------------------------------|-------------------------------|------------------------|
| S-ILS 23   | 1718/18 200 (200-1/2)          |                                |                               |                        |
| S-LOC 23   | 2500/40<br>982 (1000-3/4)      | 2500-1<br>982 (1000-1)         | 2500-2 1/2                    | 982 (1000-2 1/2)       |
| <b>C</b> CIRCLING                                | 2500-1 1/4<br>981 (1000-1 1/4) | 2500-1 1/2<br>981 (1000-1 1/2) | 2500-3 981 (1000-3)           |                        |
| EAVER FIX MINIMUMS (DUAL VOR RECEIVERS REQUIRED) |                                |                                |                               |                        |
| S-LOC 23   | 2020/24                        | 502 (600-1/2)                  | 2020/55                       | 502 (600-1)            |
| <b>C</b> CIRCLING                                | 2120-1<br>601 (700-1)          | 2180-1<br>661 (700-1)          | 2320-2 1/4<br>801 (900-2 1/4) | 2500-3<br>981 (1000-3) |

SE-1, 23 JAN 2025 to 20 FEB 2025

SE-1, 23 JAN 2025 to 20 FEB 2025