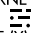


(STOOP.STOOP3) 24081
STOOP THREE ARRIVAL

AL-449 (FAA)

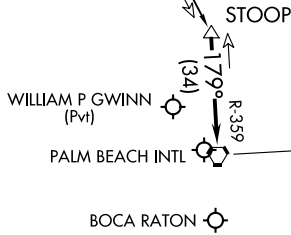
WEST PALM BEACH, FLORIDA

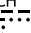
PALM BEACH APP CON
124.6 317.4
BCT AWOS-3
121.125
PBI D-ATIS
123.75

MELBOURNE
115.85 MLB 
Chan 105 (Y)

16000
*16000
R-159
(58)

NOTE: Jet aircraft only.
NOTE: DME required.
NOTE: RADAR required.



PALM BEACH
115.7 PBI 
Chan 104

6000
Ldg KPBI/KBCT/06FA

SE-3, 23 JAN 2025 to 20 FEB 2025

SE-3, 23 JAN 2025 to 20 FEB 2025

NOTE: Chart not to scale.

ARRIVAL ROUTE DESCRIPTION

MELBOURNE TRANSITION (MLB.STOOP3): From over MLB VOR/DME on
MLB R-159 to STOOP.

LANDING ALL AIRPORTS: From STOOP on PALM BEACH VORTAC (PBI) R-359 to
cross PBI VORTAC at 6000. Expect RADAR vectors.

STOOP THREE ARRIVAL
(STOOP.STOOP3) 19MAY22

WEST PALM BEACH, FLORIDA