

HI-TACAN Z RWY 25

TACAN NUW Chan 85	APCH CRS 254°	Rwy Idg TDZE Arpt Elev 8000 28 47
-----------------------------	-------------------------	---

[USN]

WHIDBEY ISLAND NAS (AULT FLD) (KNUW)

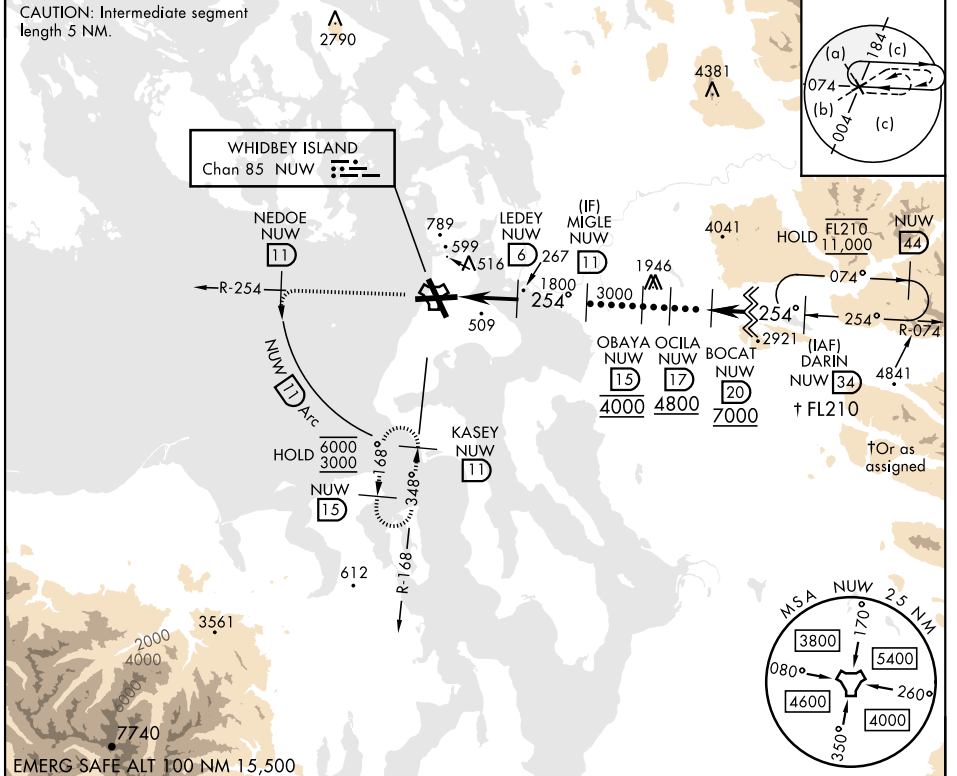
▼ * When ALS inop, increase CAT CDE vis to 2 miles.



MISSED APPROACH: Climb to 3000 via NUW TACAN R-254 to NEDOE, then arc SW of NUW via 11 DME arc to KASEY and hold.

ATIS 134.15 281.5	WHIDBEY APP CON 120.7 270.8 (EAST) 118.2 285.65 (WEST)	WHIDBEY TOWER 127.9 340.2	GND CON 121.75 336.4	CLNC DEL 135.1 379.9	ASR/PAR
-----------------------------	--	-------------------------------------	--------------------------------	--------------------------------	---------

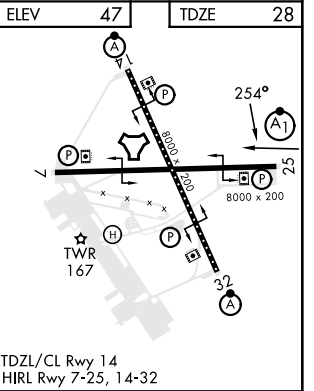
CAUTION: Intermediate segment length 5 NM.



NW-1, 23 JAN 2025 to 20 FEB 2025

NW-1, 23 JAN 2025 to 20 FEB 2025

3000 NUW R-254 NEDOE NUW (11) NUW Arc (11)	MIGLE NUW (11)	ELEV 47		TDZE 28	
		NUW TACAN KIGVE NUW (1.7) NUW (3) LEDEY NUW (6)		254° 3000 1800 3.17° TCH 50 4.3 NM	
CATEGORY	C	D	E		
S-25*	760-1 5/8	732	(800-1 1/8)		
CIRCLING	860-2 1/2 813 (900-2 1/2)	900-2 3/4 853 (900-2 3/4)	1200-3 1153 (1200-3)		



HI-TACAN Z RWY 25