

OAK HARBOR, WASHINGTON

RNAV (GPS) RWY 32

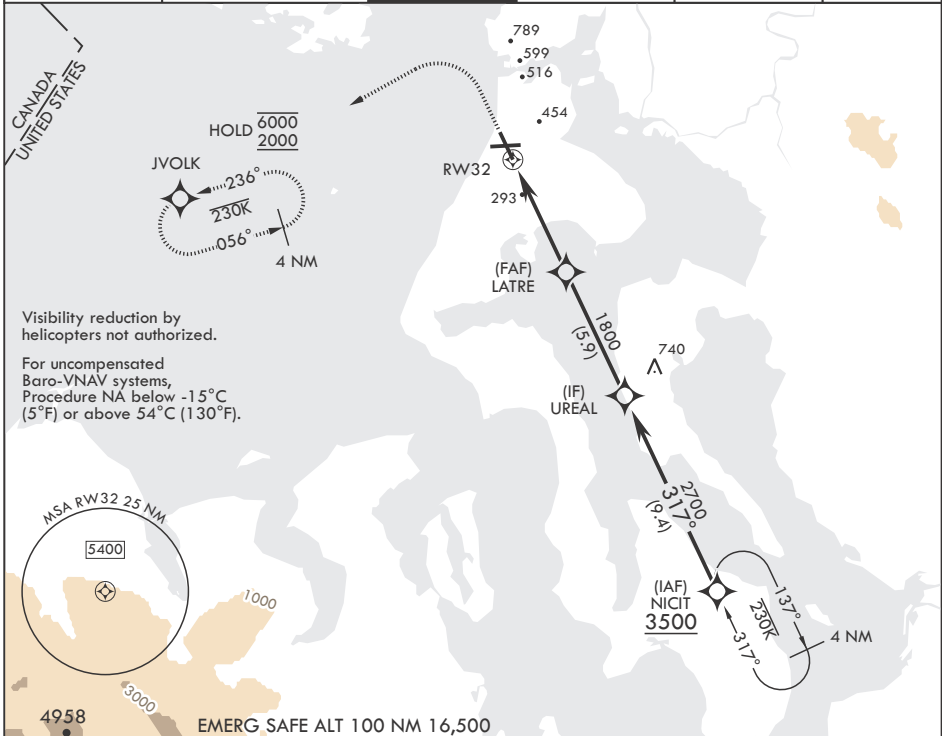
APCH CRS 317°	Rwy ldg TDZE Arprt Elev	8000 47 47
------------------	-------------------------------	------------------

-(USN)

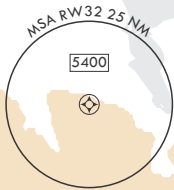
WHIDBEY ISLAND NAS (AULT FLD) (KNUW)

RNP APCH	ALSIF-2	MISSED APPROACH: Climb to 1200 then climbing left turn to 2000 direct JVOLK and hold.
<p>▼ * When ALS inop, increase vis to 1 3/8 miles. ** When ALS inop, increase CAT AB RVR to 55, vis to 1 mile; CAT CDE vis to 1 3/8 miles.</p>		

ATIS 134.15 281.5	APP CON/DEP CON 118.2 285.65 (W) 120.7 270.8 (E)	TOWER 127.9 340.2	GND CON 121.75 336.4	CLNC DEL 135.1 379.9	ASR/PAR
----------------------	--	----------------------	-------------------------	-------------------------	---------

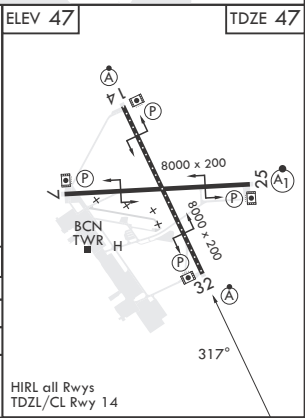
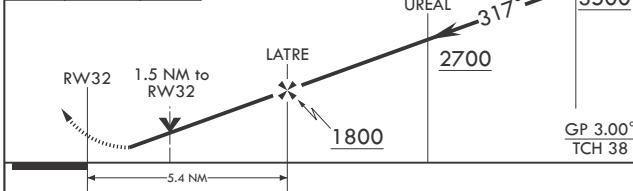


Visibility reduction by helicopters not authorized.
For uncompensated Baro-VNAV systems, Procedure NA below -15°C (5°F) or above 54°C (130°F).



EMERG SAFE ALT 100 NM 16,500

1200	2000	JVOLK	NICIT	ELEV 47	TDZE 47
------	------	-------	-------	---------	---------



CATEGORY	A	B	C	D	E
LNAV/VNAV DA*	560/55		513	(600-1)	
LNAV MDA**	560/40	513 (600-¾)	560/55	513	(600-1)
CIRCLING	760-1	713 (800-1)	860-2½ 813 (900-2½)	900-2¾ 853 (900-2¾)	1200-3 1153 (1200-3)

HIRL all Rwys
TDZL/CL Rwy 14

OAK HARBOR, WASHINGTON
Amdt 3 23JAN25

48°21'N - 122°39'W

WHIDBEY ISLAND NAS (AULT FLD) (KNUW)

RNAV (GPS) RWY 32

NW-1, 23 JAN 2025 to 20 FEB 2025

NW-1, 23 JAN 2025 to 20 FEB 2025