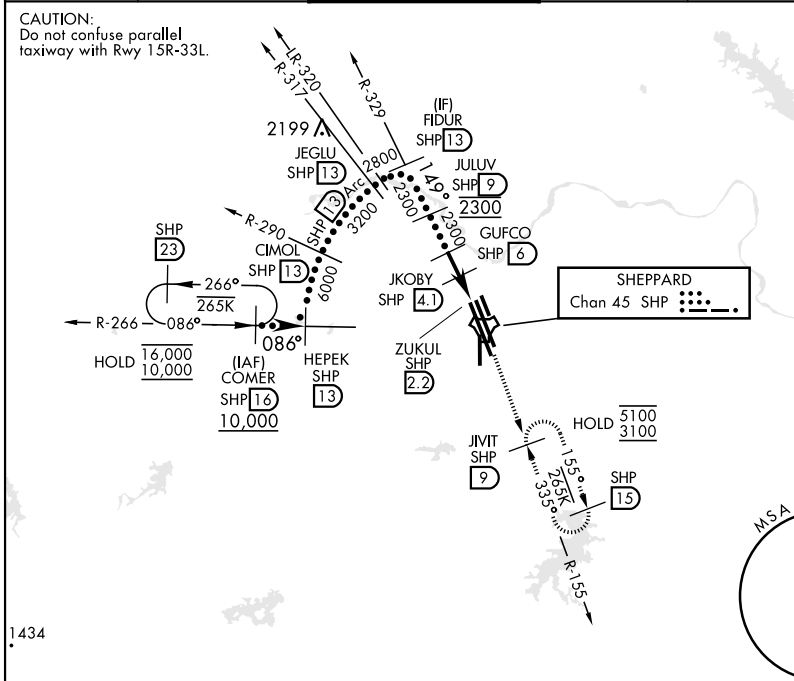
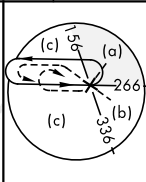


HI-TACAN RWY 15R

TACAN SHP Chan 45	APCH CRS 149°	Rwy ldg 13,100 TDZE: 998 Arprt Elev 1019	[USAF]	SHEPPARD AFB/WICHITA FALLS MUNI (KSPS)
▼ * When ALS inop, increase CAT CDE vis to 1¼ miles. ** Circling not authorized W of Rwy 15R-33L.				MALSR
MISSED APPROACH: Climb and maintain 3100, intercept SHP TACAN R-155 to SHP R-155/9 DME (JVIT) and hold.				

ATIS* 132.05 269.9	APP CON 118.2 269.025	TOWER* 119.75 279.525 (CTAF)	GND CON 125.5 289.4	CLNC DEL 121.2 282.225	ASR
-----------------------	--------------------------	---------------------------------	------------------------	---------------------------	-----

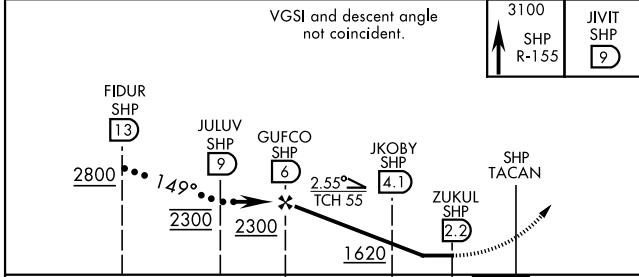
CAUTION:
Do not confuse parallel taxiway with Rwy 15R-33L.



SC-2, 23 JAN 2025 to 20 FEB 2025

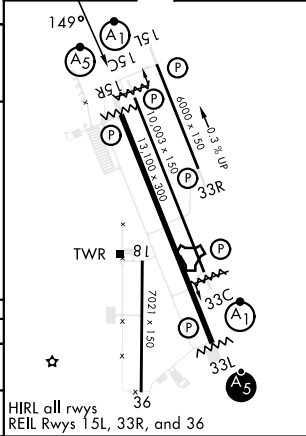
SC-2, 23 JAN 2025 to 20 FEB 2025

EMERG SAFE ALT 100 NM 4600



CATEGORY	C	D	E
S-15R*	1420-¾	422 (500-¾)	
CIRCLING**	1480-1½ 461 (500-1½)	2100-3	1081 (1100-3)

ELEV 1019	TDZE 998
-----------	----------



HIRL all rwys
REIL Rwy 15L, 33R, and 36

HI-TACAN RWY 15R