

AIRPORT DIAGRAM

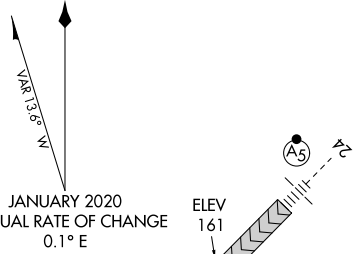
AL-460 (FAA)

BRADLEY INTL (BDL)
WINDSOR LOCKS, CONNECTICUT

D-ATIS
118.15
BRADLEY TOWER
120.3 351.8
GND CON
121.9 348.6
CLNC DEL
121.75 322.3
CPDLC
PDC

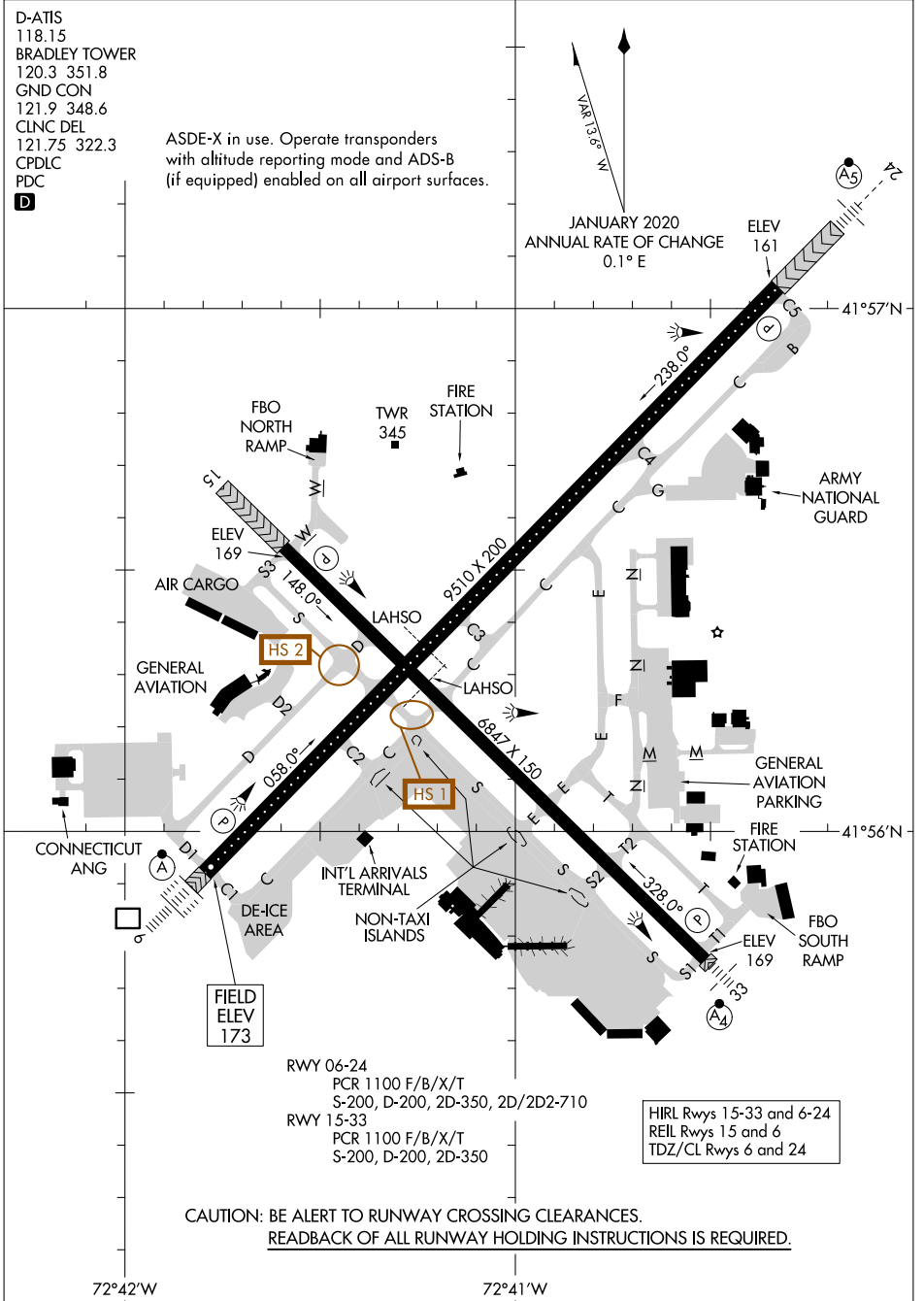
ASDE-X in use. Operate transponders
with altitude reporting mode and ADS-B
(if equipped) enabled on all airport surfaces.

D



NE-1, 23 JAN 2025 to 20 FEB 2025

NE-1, 23 JAN 2025 to 20 FEB 2025



CAUTION: BE ALERT TO RUNWAY CROSSING CLEARANCES.
READBACK OF ALL RUNWAY HOLDING INSTRUCTIONS IS REQUIRED.

AIRPORT DIAGRAM

WINDSOR LOCKS, CONNECTICUT
BRADLEY INTL (BDL)