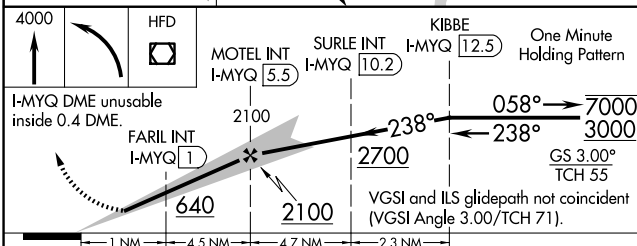
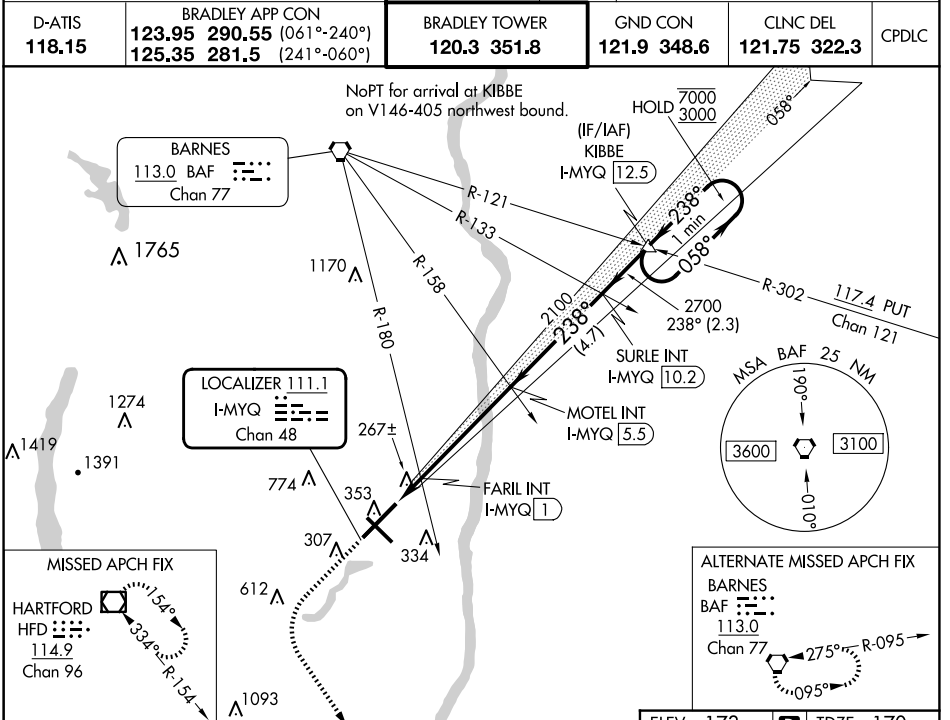


LOC/DME I-MYQ 111.1 Chan 48	APP CRS 238°	Rwy Idg TDZE Apt Elev	9509 170 173
--	------------------------	-----------------------------	---

ILS or LOC RWY 24

BRADLEY INTL (BDL)

D-ATIS 118.15	BRADLEY APP CON	BRADLEY TOWER	GND CON	CLNC DEL	CPDLC
	123.95 290.55 (061°-240°) 125.35 281.5 (241°-060°)	120.3 351.8	121.9 348.6	121.75 322.3	



CATEGORY	A	B	C	D
S-ILS 24	370/18		200 (200-½)	
S-LOC 24	640/24	470 (500-½)	640/50	470 (500-1)
C CIRCLING	700-1	527 (600-1)	1120-2¾ 947 (1000-2¾)	1220-3 1047 (1100-3)
FARIL FIX MINIMUMS (DUAL VOR RECEIVERS OR DME REQUIRED)				
S-LOC 24	520/24	350 (400-½)	520/30	350 (400-¾)
C CIRCLING	700-1	527 (600-1)	1120-2¾ 947 (1000-2¾)	1220-3 1047 (1100-3)

ELEV 173 TDZE 170

238°

TWR 345

AS

GS 3.00° TCH 55

9510 X 200

6847 X 150

35

6

5

4

3

2

1

0

TDZ/CL Rwy 6 and 24

HIRL Rwy 6-24 and 15-33

REL Rwy 6 and 15

FAF to MAP 5.9 NM

Knots	60	90	120	150	180
Min:Sec	5:54	3:56	2:57	2:22	1:58

NE-1, 23 JAN 2025 to 20 FEB 2025

NE-1, 23 JAN 2025 to 20 FEB 2025