

LOC I-LMT <b>109.5</b>	APCH CRS <b>324°</b>	Rwy ldg <b>10,302</b> TDZE <b>4095</b> Arpt Elev <b>4095</b>
---------------------------	-------------------------	--------------------------------------------------------------------------

[USAF]

CRATER LAKE/KLAMATH RGNL (KLMT)

DME required

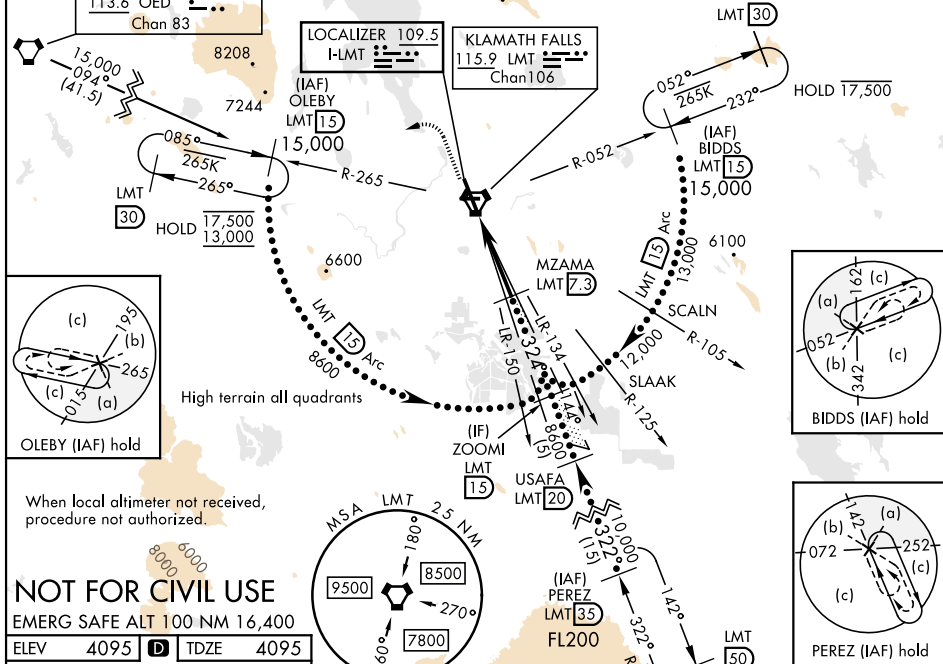
\* When ALS inop, increase RVR to 45 vis to 7/8 mile.  
 \*\* Circling not authorized for CAT DE NE of Rwy 14-32.



MISSED APPROACH: Climb to 6000 then climbing left turn to 13,000 on hdg 233° and on LMT VORTAC R-265 to OLEBY/LMT 15 DME and hold. Cont climb-in-hold to 13,000.

ATIS <b>126.5 263.0</b>	KINGSLEY APP CON <b>123.675 270.8</b>	KINGSLEY TOWER ★ <b>133.975 (CTAF) 0 257.8</b>	GND CON <b>121.9 348.6</b>	UNICOM <b>122.95</b>
----------------------------	------------------------------------------	---------------------------------------------------	-------------------------------	-------------------------

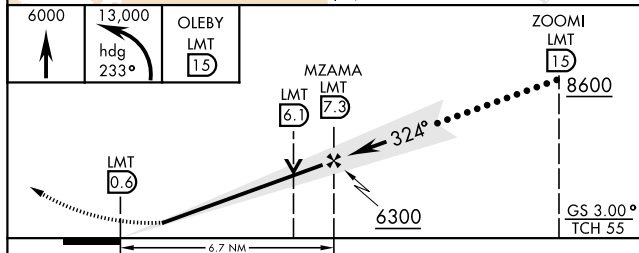
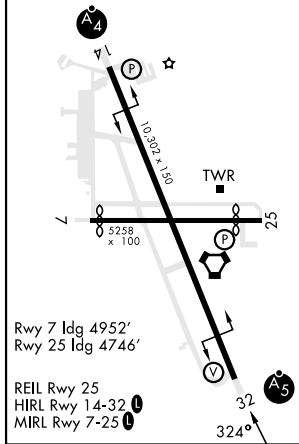
9423	Simultaneous reception of I-LMT and LMT DME required.	7260	Min climb of 413 ft/NM to 12,200 - Controlling Obstacle 8208'
		Knots	60 120 180 240 300 360
		V/V(fpm)	413 826 1239 1652 2065 2478



When local altimeter not received, procedure not authorized.

**NOT FOR CIVIL USE**  
EMERG SAFE ALT 100 NM 16,400

ELEV 4095	D	TDZE 4095
-----------	---	-----------



CATEGORY	C	D	E
S-ILS 32*	4369/24	274	(300-1/2)
S-LOC 32	5940-3	1845	(1900-3)
CIRCLING **	5940-3	1845	(1900-3)

NW-1, 23 JAN 2025 to 20 FEB 2025

NW-1, 23 JAN 2025 to 20 FEB 2025