

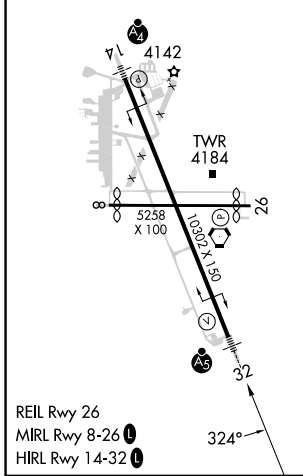
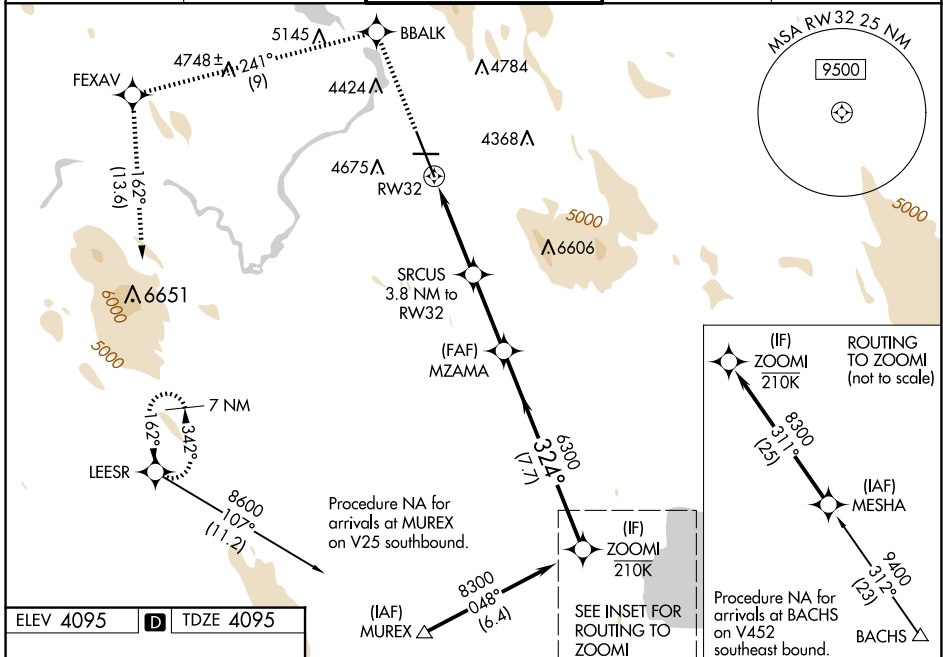
WAAS CH 70702 W32A	APP CRS 324°	Rwy Idg 10302 TDZE 4095 Apt Elev 4095
---------------------------------	------------------------	--

RNAV (GPS) RWY 32

CRATER LAKE/KLAMATH RGNL (L.M.T)

RNP APCH - GPS.	MALSR 	MISSED APPROACH: Climb to 8600 direct BBALK and on track 241° to FEXAV and on track 162° to LEESR and hold. *Missed approach requires minimum climb of 235 feet per NM to 6100.
<p>Baro-VNAV NA. Circling NA for Cat D northeast of Rwy 14-32. For inop ALS, increase LPV all Cats visibility to 1½ SM, LPV* (CG 235) all Cats visibility to RVR 4500, LNAV/VNAV all Cats visibility to 1¾ SM, and LNAV Cat C/D visibility to 2½ SM.</p>		

ATIS 126.5 263.0	KINGSLEY APP CON* 123.675 270.8	KINGSLEY TOWER* 133.975 (CTAF) 257.8	GND CON 121.9 348.6	UNICOM 122.95
----------------------------	---	--	-------------------------------	-------------------------



ELEV 4095	D	TDZE 4095					
8600	BBALK	tr 241°	FEXAV	tr 162°	LEESR	MZAMA	ZOOMI
<p>Procedure NA for arrivals at MUREX on V25 southbound.</p>		<p>Procedure NA for arrivals at BACHS on V452 southeast bound.</p>		<p>SEE INSET FOR ROUTING TO ZOOMI</p>		<p>ROUTING TO ZOOMI (not to scale)</p>	
<p>2.3 NM to RW32</p>		<p>3.8 NM to RW32</p>		<p>6300</p>		<p>8300</p>	
<p>5360</p>		<p>6300</p>		<p>324°</p>		<p>GP 3.00° TCH 55</p>	
<p>2.3 NM</p>		<p>1.5 NM</p>		<p>3 NM</p>		<p>7.7 NM</p>	
CATEGORY	A	B	C	D			
LPV DA*	4387/24		292 (300-½)				
LPV DA	4644/60		549 (600-1¼)				
LNAV/VNAV DA	4705-1½		610 (700-1½)				
LNAV MDA	4900/24 805 (900-½)	4900/40 805 (900-¾)	4900-1⅞	805 (900-1½)			
CIRCLING	4900-1 805 (900-1)	4980-1¼ 885 (900-1¼)	5420-3 1325 (1400-3)	5680-3 1585 (1600-3)			

NW-1, 23 JAN 2025 to 20 FEB 2025

NW-1, 23 JAN 2025 to 20 FEB 2025