

RNAV (RNP) Z RWY 3L
TRI-CITIES (PSC)

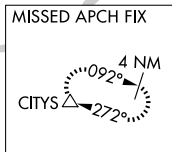
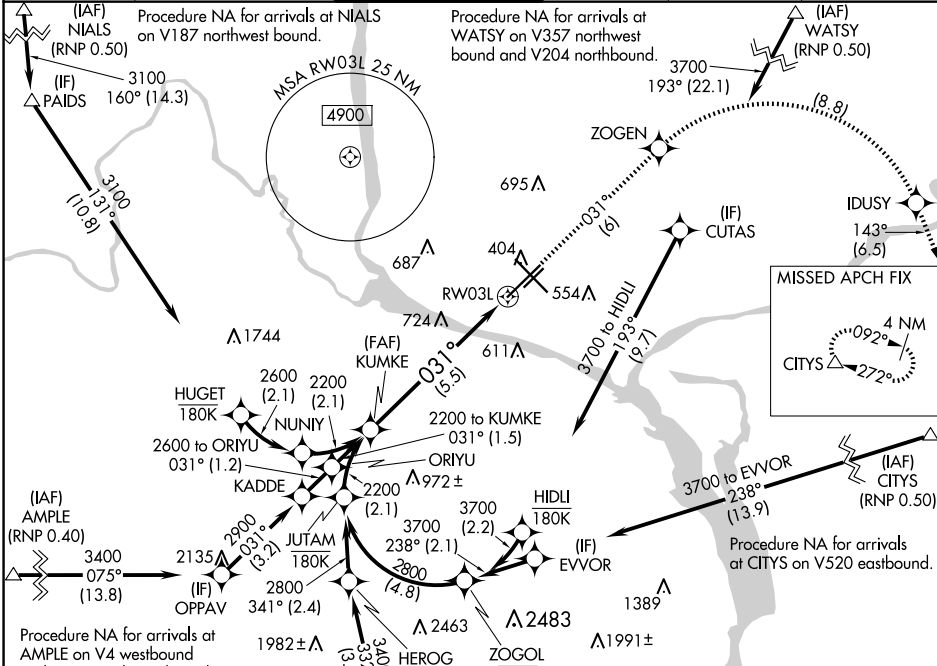
APP CRS 031°	Rwy Idg 7707
	TDZE 410
	Apt Elev 410

RNP AR APCH. RF required.

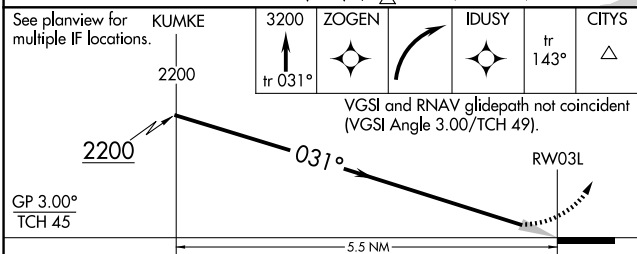
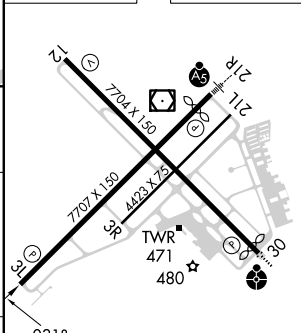
MISSED APPROACH: Climb to 3200 on track 031° to ZOGEN, right turn to IDUSY, and on track 143° to CITYS and hold.

▼ For uncompensated Baro-VNAV systems, procedure NA below -14°C or above 54°C.

ATIS 125.65	SPOKANE APP CON * 128.75 377.2	TRI-CITIES TOWER * 135.3 (CTAF) 0 323.3	GND CON 121.8	CLNC DEL 120.0	UNICOM 122.95
-----------------------	--	---	-------------------------	--------------------------	-------------------------



ELEV 410	D	TDZE 410
----------	---	----------



CATEGORY	A	B	C	D
RNP 0.11 DA		729-1	319 (400-1)	
RNP 0.30 DA		849-1½	439 (500-1½)	

AUTHORIZATION REQUIRED

REIL Rwy 3L and 12
MIRL Rwy 12-30
HIRL Rwy 3L-21R

NW-1, 23 JAN 2025 to 20 FEB 2025

NW-1, 23 JAN 2025 to 20 FEB 2025