

WAAS CH 40206 W03A	APP CRS 031°	Rwy Idg TDZE Apt Elev	7707 410 410
--	------------------------	-----------------------------	---

RNAV (GPS) Y RWY 3L

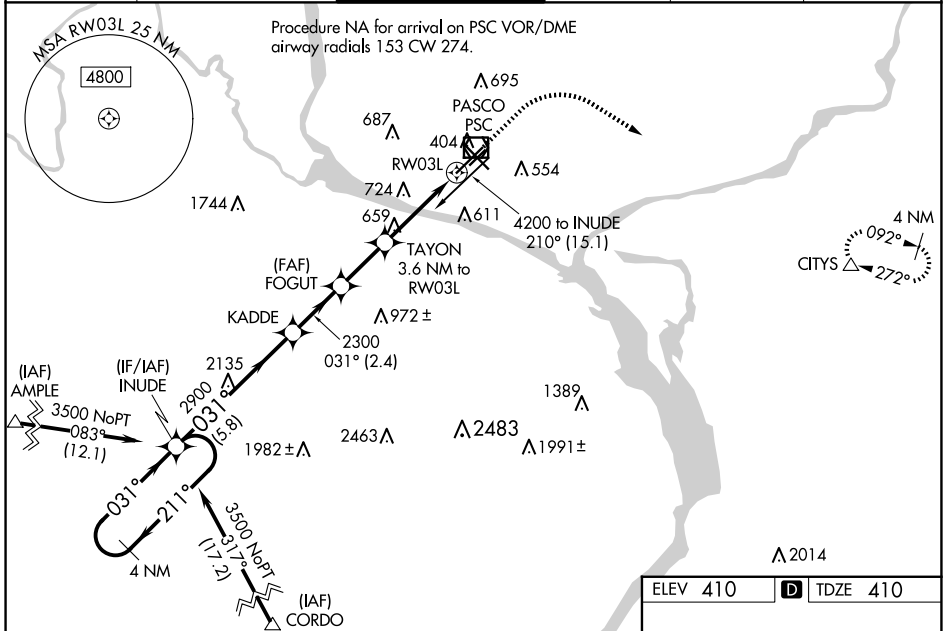
TRI-CITIES (PSC)

RNP APCH.

⚠ Baro-VNAV NA when using Hermiston altimeter setting. For uncompensated Baro-VNAV systems, LNAV/VNAV NA below -14°C or above 54°C. VDP NA with Hermiston altimeter setting.
⚠ When local altimeter setting not received, use Hermiston altimeter setting: increase all DA 95 feet and all MDA 100 feet. Increase LPV all Cats visibility ¼ mile, LNAV/VNAV all Cats visibilities ⅓ mile: increase LNAV Cats C and D visibility ⅓ mile. Circling Cat C and D visibility ¼ mile.

MISSED APPROACH:
 Climb to 1000 then climbing right turn to 3200 direct CITYS and hold.

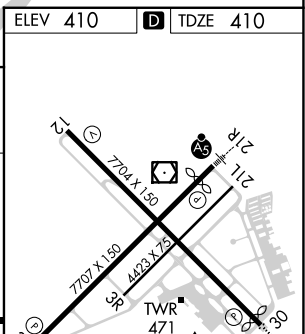
ATIS 125.65	SPOKANE APP CON* 128.75 377.2	TRI-CITIES TOWER* 135.3 (CTAF) 0 323.3	GND CON 121.8	CLNC DEL 120.0	UNICOM 122.95
-----------------------	---	--	-------------------------	--------------------------	-------------------------



VGSI and RNAV glidepath not coincident (VGSI Angle 3.00/TCH 49).

4 NM Holding Pattern	INUDE	KADDE	FOGUT	TAYON	CITYS
3500 ← 211°	← 031° →	031°	2900	2300	1000
GP 3.00°					3200
TCH 45					
	5.8 NM	2.4 NM	2.2 NM	2.1 NM	1.5 NM

*1600 *1.5 NM to RW03L *LNNAV only



CATEGORY	A	B	C	D
LPV DA	610-¾ 200 (200-¾)			
LNAV/VNAV DA	708-1 298 (300-1)			
LNAV MDA	920-1 510 (600-1)	920-1 ⅓ 510 (600-1 ⅓)		
C CIRCLING	920-1 510 (600-1)	940-1 530 (600-1)	1040-1 ⅓ 630 (700-1 ⅓)	1100-2 ⅓ 690 (700-2 ⅓)

REIL Rwy 3L and 12
 MIRL Rwy 12-30 **⓪**
 HIRL Rwy 3L-21R **⓪**

NW-1, 23 JAN 2025 to 20 FEB 2025

NW-1, 23 JAN 2025 to 20 FEB 2025