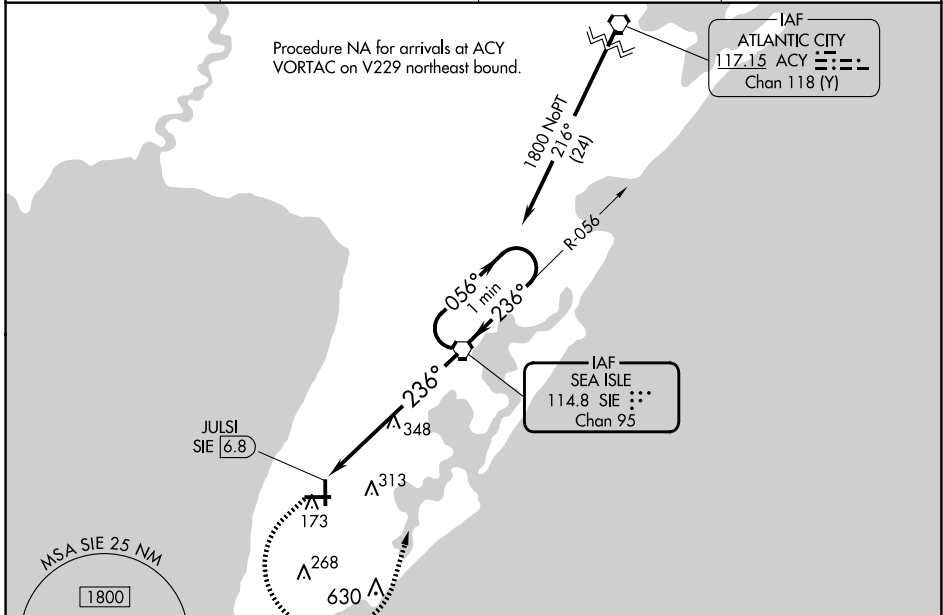


VORTAC SIE <b>114.8</b> Chan <b>95</b>	APP CRS <b>236°</b>	Rwy Idg TDZE Apt Elev	<b>N/A</b> <b>N/A</b> <b>22</b>
--	------------------------	-----------------------------	---------------------------------------

**VOR-A**  
CAPE MAY COUNTY (WWD)

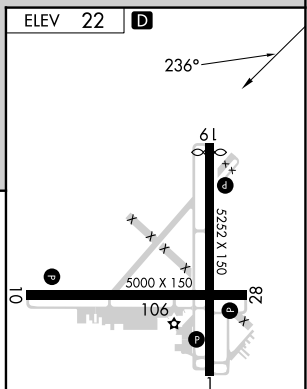
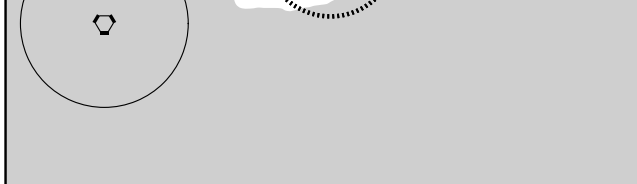
<p><b>▼</b> <b>▲</b></p> <p>Circling NA for Cats C and D NE of Rwy 19 and 28. Circling Rwy 1 NA at night.</p>	<p>MISSED APPROACH: Climb to 800 then climbing left turn to 1800 direct SIE VORTAC and hold.</p>
---	--

AWOS-3PT <b>118.275</b>	ATLANTIC CITY APP CON <b>124.6 327.125</b>	CLNC DEL <b>121.7</b>	UNICOM <b>122.7 (CTAF) 0</b>
----------------------------	---	--------------------------	---------------------------------



NE-2, 23 JAN 2025 to 20 FEB 2025

NE-2, 23 JAN 2025 to 20 FEB 2025



800	1800	SIE	
↑	↷	⬡	
One Minute Holding Pattern			
SIE VORTAC			
056° → 1800			
← 236°			
JULSI SIE (6.8)			
6.8 NM			

MIRL Rwy 10-28	0				
HIRL Rwy 1-19	0				
FAF to MAP 6.8 NM					
Knots	60	90	120	150	180
Min:Sec	6:48	4:32	3:24	2:43	2:16

CATEGORY	A	B	C	D	FAF to MAP 6.8 NM					
<b>C</b> CIRCLING	640-7/8 618 (700-7/8)	640-1 618 (700-1)	640-1 1/4 618 (700-1 1/4)	980-3 958 (1000-3)	Knots	60	90	120	150	180
					Min:Sec	6:48	4:32	3:24	2:43	2:16