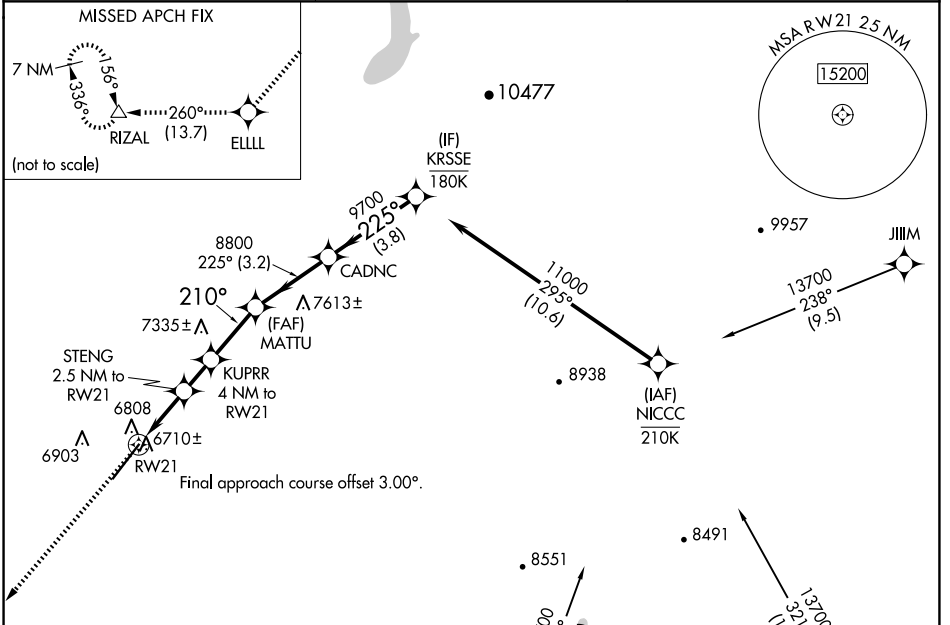


APP CRS 210°	Rwy Idg 9201
	TDZE 6689
	Apt Elev 6689

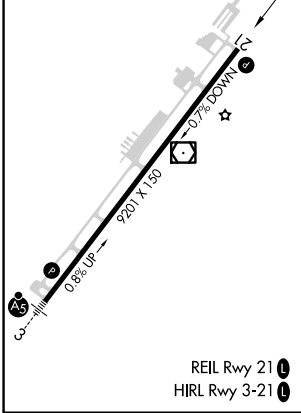
RNAV (GPS) RWY 21

DURANGO-LA PLATA COUNTY (D.R.O)

RNP APCH.		MISSED APPROACH: Climb to 11000 direct ELLLL and on track 260° to RIZAL and hold.
<p>▽ Rwy 21 helicopter visibility reduction below 3/4 SM NA. For uncompensated Baro-VNAV systems, LNAV/VNAV NA below -20°C or above 54°C.</p>		
ASOS 120.625	DENVER CENTER 118.575 348.7	UNICOM 122.8 (CTAF) 0



ELEV 6689	D	TDZE 6689
-----------	----------	-----------



11000	ELLLL	RIZAL	KRSSE	
↑	✧	△	✧	
	tr 260°			
*LNAV only	STENG 2.5 NM to RWY 21	KUPRR 4 NM to RWY 21	MATTU 8800	11000
	*1.2 NM to RWY 21		8800	GP 3.00° TCH 51
	7540*	8000*	9700	
	1.2 NM	1.3 NM	1.5 NM	2.5 NM
			3.2 NM	3.8 NM
CATEGORY	A	B	C	D
LNAV/VNAV DA	7019-1 330 (400-1)			
LNAV MDA	7120-1 431 (500-1)		7120-1 1/4 431 (500-1 1/4)	
C CIRCLING	7160-1 471 (500-1)	7220-1 531 (600-1)	7540-2 1/2 851 (900-2 1/2)	8140-3 1451 (1500-3)

SW-1, 23 JAN 2025 to 20 FEB 2025

SW-1, 23 JAN 2025 to 20 FEB 2025