

ALTUS, OKLAHOMA

ILS or LOC RWY 36R

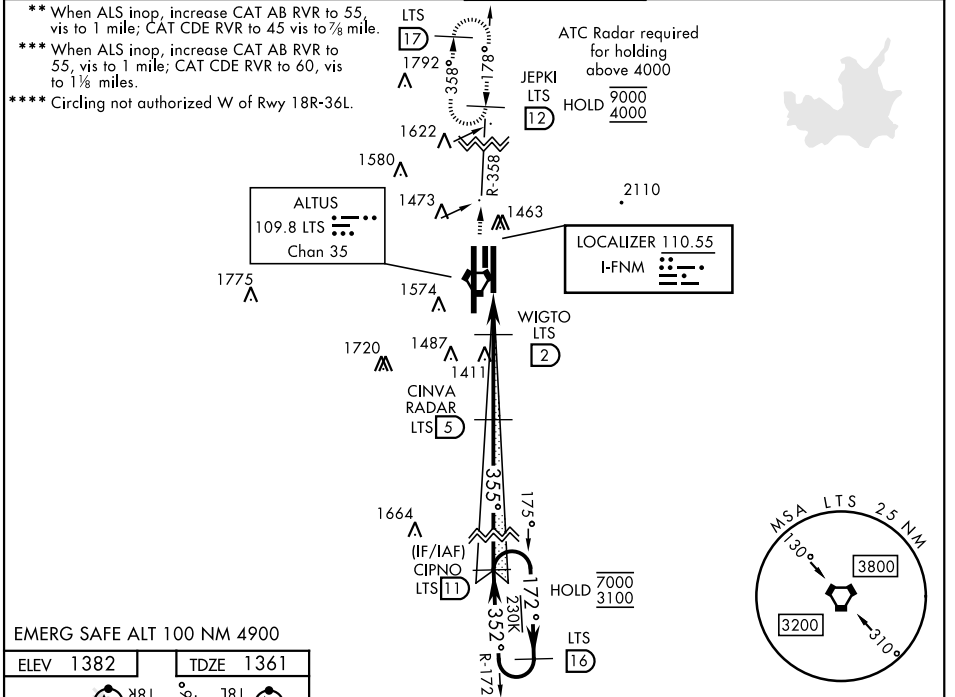
LOC I-FNM 110.55	APCH CRS 355°	Rwy Idg 9001 TDZE 1361 Arprt Elev 1382	AL-482 [USAF]	ALTUS AFB (KLTS)
----------------------------	-------------------------	---	---------------	------------------

DME or RADAR required.

ALSF-1

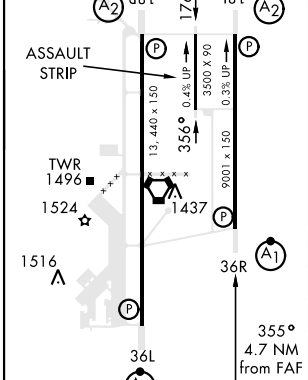
MISSED APPROACH: Climb to 4000, intercept LTS VORTAC R-358 to 12 DME (JEPKI) and hold.

ATIS ★ 109.8 273.5	FORT WORTH CENTER 133.5 350.35	APP CON 125.1 353.7	TOWER ★ 119.65 254.4	GND CON 121.85 275.8	CLNC DEL 120.65 284.7
------------------------------	--	-------------------------------	--------------------------------	--------------------------------	---------------------------------

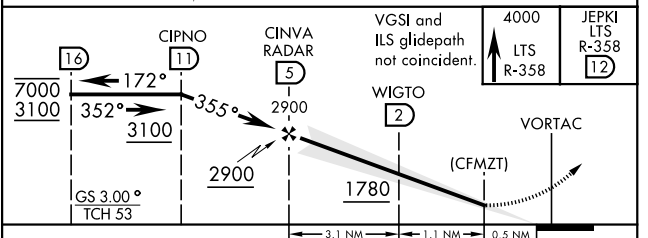


EMERG SAFE ALT 100 NM 4900

ELEV 1382	TDZE 1361
-----------	-----------



FAF to MAP 4.2 NM					
Knots	60	90	120	150	180
Min:Sec	4:12	2:48	2:06	1:41	1:24



CATEGORY	A	B	C	D	E
S-ILS 36R*	1561/24		200	(200-1/2)	
S-LOC 36R**	1680/24		319	(300-1/2)	
CIRCLING	1780-1 398 (400-1)	1840-1 458 (500-1)	1880-1 1/2 498 (500-1 1/2)	2080-2 1/4 698 (700-2 1/4)	2180-2 3/4 798 (800-2 3/4)
LOCAL ALTIMETER, WITHOUT LAST STEPDOWN FIX					
S-LOC 36R**	1780/24	419 (400-1/2)	1780/40	419	(400-3/4)
CIRCLING	1780-1 398 (400-1)	1840-1 458 (500-1)	1880-1 1/2 498 (500-1 1/2)	2080-2 1/4 698 (700-2 1/4)	2180-2 3/4 798 (800-2 3/4)

ALTUS, OKLAHOMA 34°40'N-99°16'W ALTUS AFB (KLTS)
Amdt 5 14JUL22

ILS or LOC RWY 36R

SC-1, 23 JAN 2025 to 20 FEB 2025

SC-1, 23 JAN 2025 to 20 FEB 2025