

ALTUS, OKLAHOMA

RNAV (RNP) X RWY 36L

| | | |
|----------|------------|--------|
| APCH CRS | Rwy Idg | 13,440 |
| 355° | TDZE | 1354 |
| | Arprt Elev | 1382 |

AL-482 (USAF)

ALTUS AFB (KLTS)

RNP AR APCH - RF

ALS-1

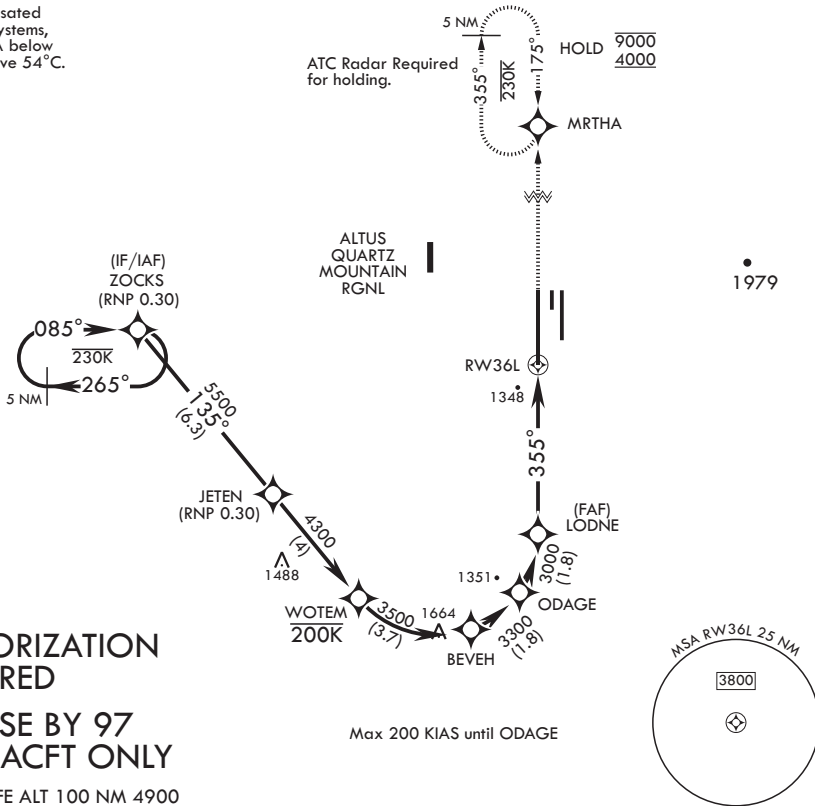
MISSED APPROACH: Climb to 4000 on track 355° to MRTHA and hold.

* When ALS inop, increase RVR to 45, vis to 7/8 mile.
** When ALS inop, increase RVR to 55, vis to 1 mile.

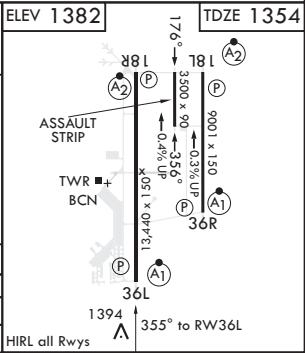
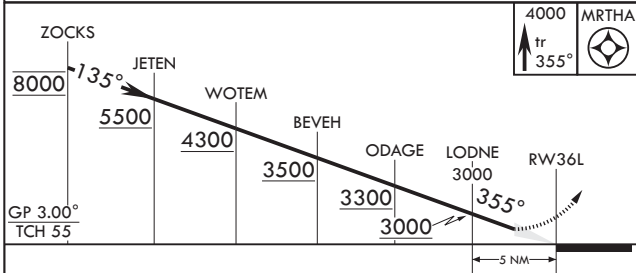


| | | | | |
|-----------------------|------------------------|-------------------------|-------------------------|--------------------------|
| ATIS ★ 109.8 273.5 | APP CON 125.1 353.7 | TOWER ★ 119.65 254.4 | GND CON 121.85 275.8 | CLNC DEL 120.65 284.7 |
|-----------------------|------------------------|-------------------------|-------------------------|--------------------------|

For uncompensated Baro-VNAV systems, procedure NA below -17°C or above 54°C.



AUTHORIZATION REQUIRED
FOR USE BY 97 AMW ACFT ONLY
EMERG SAFE ALT 100 NM 4900



| CATEGORY | A | B | C | D |
|---------------|---------|-----|-----------|---|
| RNP 0.10 DA* | 1646/24 | 292 | (300-1/2) | |
| RNP 0.30 DA** | 1732/35 | 378 | (400-3/8) | |

ALTUS, OKLAHOMA
Amdt 2 14JUL22

34°40'N - 99°16'W

ALTUS AFB (KLTS)

RNAV (RNP) X RWY 36L

SC-1, 23 JAN 2025 to 20 FEB 2025

SC-1, 23 JAN 2025 to 20 FEB 2025