

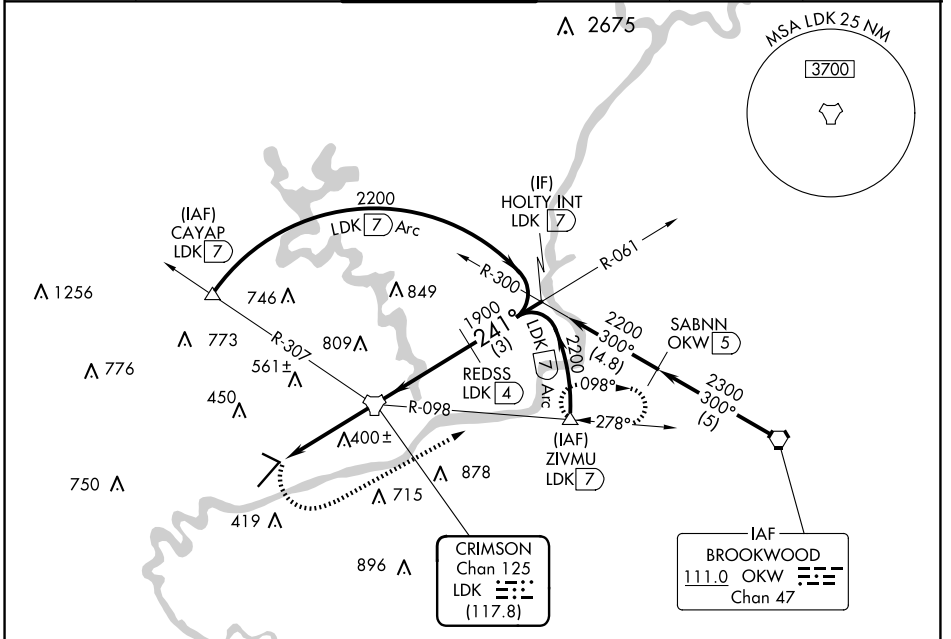
TACAN LDK Chan <b>125</b> <b>(117.8)</b>	APP CRS <b>241°</b>	Rwy ldg <b>6498</b> TDZE <b>164</b> Apt Elev <b>170</b>
--	------------------------	---

# TACAN RWY 22

TUSCALOOSA NTL (TCL)

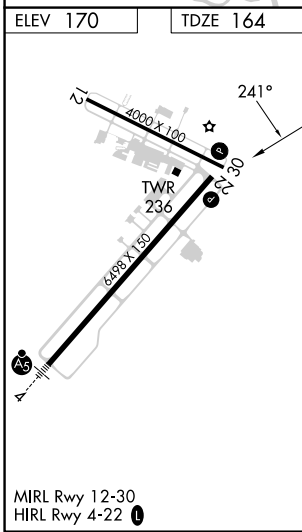
<p><b>▼</b> Circling Rwy 12, 30 NA at night.</p> <p><b>▲</b> Rwy 22 helicopter visibility reduction below <math>\frac{3}{4}</math> SM NA.</p>	<p>MISSED APPROACH: Climbing left turn to 2300 on heading 060° and LDK TACAN R-098 to ZIVMU/LDK 7 DME and hold.</p>
---	---

ASOS <b>132.825</b>	BIRMINGHAM APP CON <b>120.15 269.25</b>	TUSCALOOSA TOWER ★ <b>126.3</b> (CTAF) <b>0 256.7</b>	GND CON <b>121.8 257.95</b>	CLNC DEL <b>120.775</b>	UNICOM <b>122.95</b>
------------------------	--	--	--------------------------------	----------------------------	-------------------------



SE-4, 23 JAN 2025 to 20 FEB 2025

SE-4, 23 JAN 2025 to 20 FEB 2025



	2300	LDK R-098	ZIVMU △	LDK TACAN	REDSS LDK 4	HOLTY INT LDK 7	2200
	hdg 060°			LDK 4	LDK 2.2	LDK 2.2	3.00° TCH 50
		1.8 NM	2.2 NM	4 NM	3 NM		
CATEGORY	A	B		C		D	
S-22	800-1	636 (700-1)		800-1 $\frac{3}{4}$		636 (700-1 $\frac{3}{4}$ )	
<b>C</b> CIRCLING	800-1	630 (700-1)		960-2 $\frac{1}{4}$ 790 (800-2 $\frac{1}{4}$ )		960-2 $\frac{1}{2}$ 790 (800-2 $\frac{1}{2}$ )	