

VOR/DME SSM	APP CRS	Rwy Idg TDZE	5056
112.2	337°	716	
Chan 59		Apt Elev	716

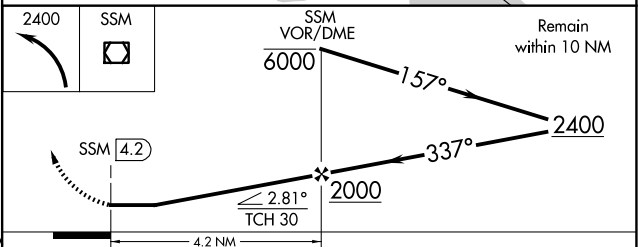
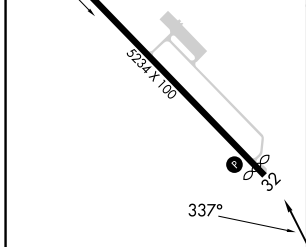
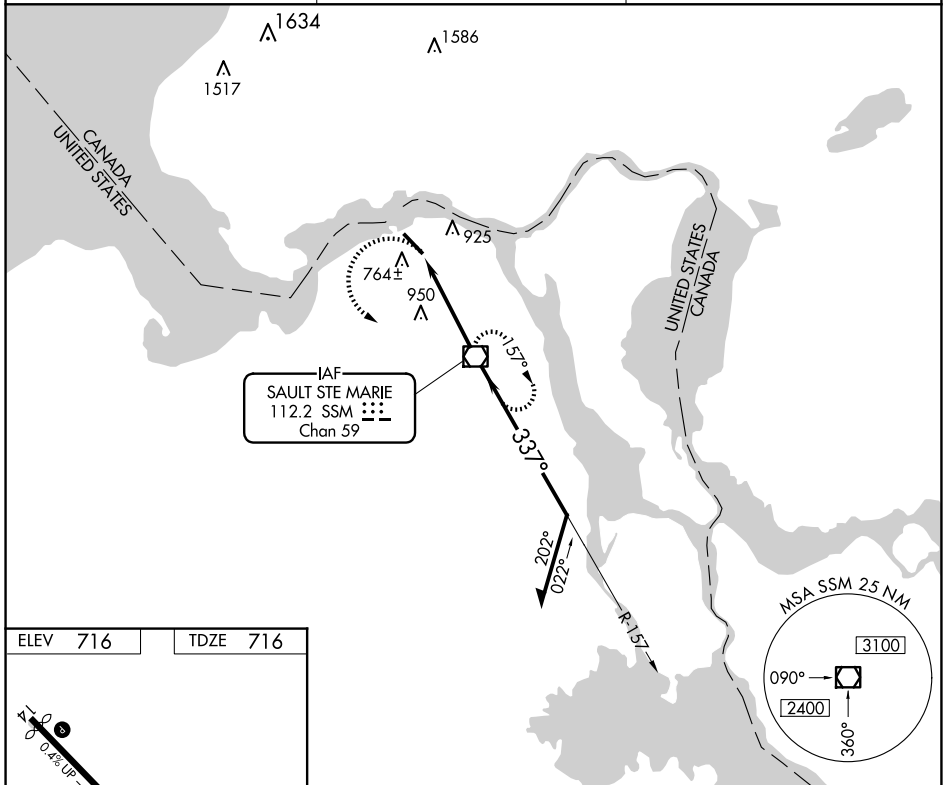
# VOR RWY 32

SAULT STE MARIE MUNI/SANDERSON FLD (A.NJ)

**⚠** When local altimeter setting not received, use Chippewa County Intl altimeter setting and increase all MDA 60 feet and increase S-32 Cat C visibility to 1¼ mile. Rwy 32 helicopter visibility reduction below ¾ SM NA.

**MISSED APPROACH:**  
Climbing left turn to 2400  
direct SSM VOR/DME and hold.

ASOS <b>118,375</b>	TORONTO CENTER <b>132.65 344.5</b>	UNICOM <b>122.7 (CTAF) 0</b>
------------------------	---------------------------------------	---------------------------------



MIRL Rwy 14-32	REIL Rwys 14 and 32	FAF to MAP 4.2 NM			
Knots	60	90	120	150	180
Min:Sec	4:12	2:48	2:06	1:41	1:24
CATEGORY	A	B	C	D	
S-32	1260-1	544 (600-1)	1260-1½ 544 (600-1½)	NA	
CIRCLING	1280-1	564 (600-1)	1320-1¾ 604 (700-1¾)	NA	

# VOR RWY 32

EC-1, 23 JAN 2025 to 20 FEB 2025

EC-1, 23 JAN 2025 to 20 FEB 2025