

WAAS CH <b>56523</b> <b>W12A</b>	APP CRS <b>118°</b>	Rwy Idg TDZE Apt Elev	<b>4400</b> <b>3294</b> <b>3298</b>
--	------------------------	-----------------------------	---

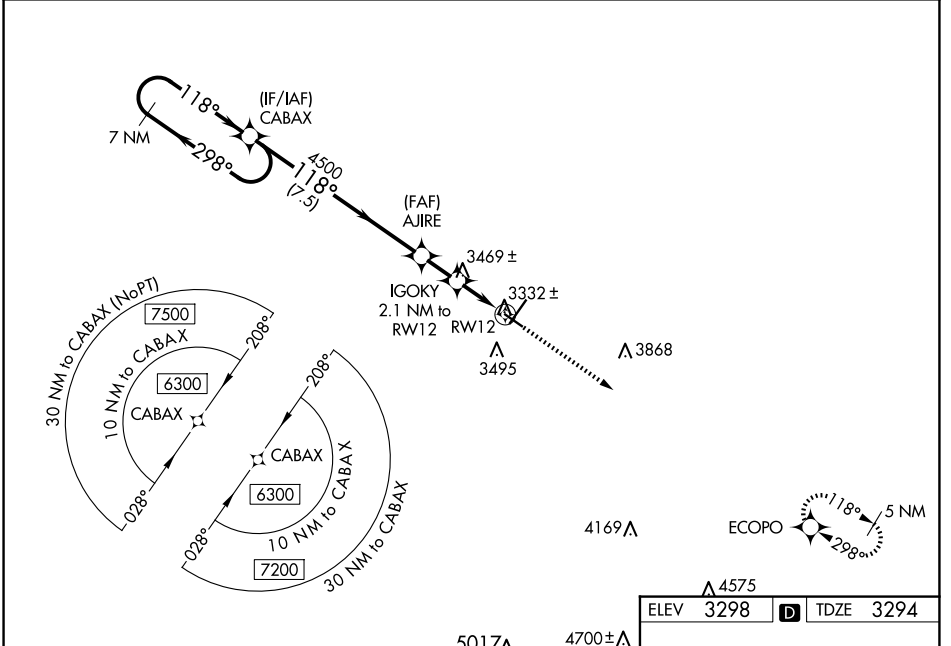
# RNAV (GPS) RWY 12

CHADRON MUNI (CDR)

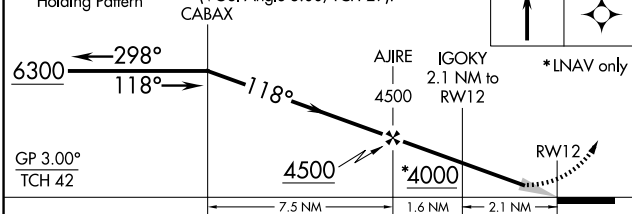
**⚠** Baro-VNAV NA when using Pine Ridge altimeter setting. For uncompensated Baro-VNAV systems, LNAV/VNAV NA below -21°C (-5°F) or above 54°C (130°F). DME/DME RNP-0.3 NA. When local altimeter setting not received, use Pine Ridge altimeter setting and increase all DA 70 feet and all MDA 80 feet; increase LPV all Cats visibility 1/8 mile, LNAV/VNAV all Cats visibility 1/4 mile, and Circling Cat C visibility 1/4 mile.

**MISSED APPROACH:**  
Climb to 5900 direct ECOPO and hold.

ASOS <b>118.05</b>	DENVER CENTER <b>127.95 338.2</b>	UNICOM <b>122.8 (CTAF) ①</b>
-----------------------	--------------------------------------	---------------------------------

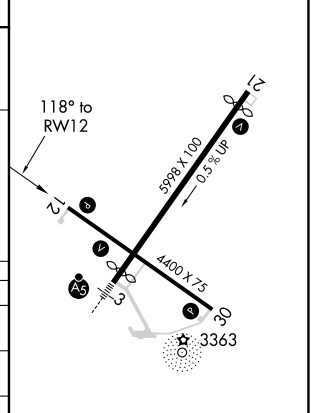


7 NM Holding Pattern  
VGSI and RNAV glidepath not coincident (VGSI Angle 3.00/TCH 29).



CATEGORY	A	B	C	D
LPV DA	3544-1	250 (300-1)		NA
LNAV/VNAV DA	3719-1½	425 (500-1½)		NA
LNAV MDA	3720-1	426 (500-1)	3720-1¼ 426 (500-1¼)	NA
CIRCLING	3820-1 522 (600-1)	3920-1 622 (700-1)	3920-1¾ 622 (700-1¾)	NA

ELEV <b>3298</b>	<b>D</b>	TDZE <b>3294</b>
------------------	----------	------------------



HIRL Rwy 3-21 ①  
MIRL Rwy 12-30 ①  
REIL Rwy 21 and 30 ①

NC-2, 23 JAN 2025 to 20 FEB 2025

NC-2, 23 JAN 2025 to 20 FEB 2025