

WAAS CH 72719 W22A	APP CRS 225°	Rwy Idg TDZE Apt Elev	5500 1117 1148
--	------------------------	-----------------------------	---

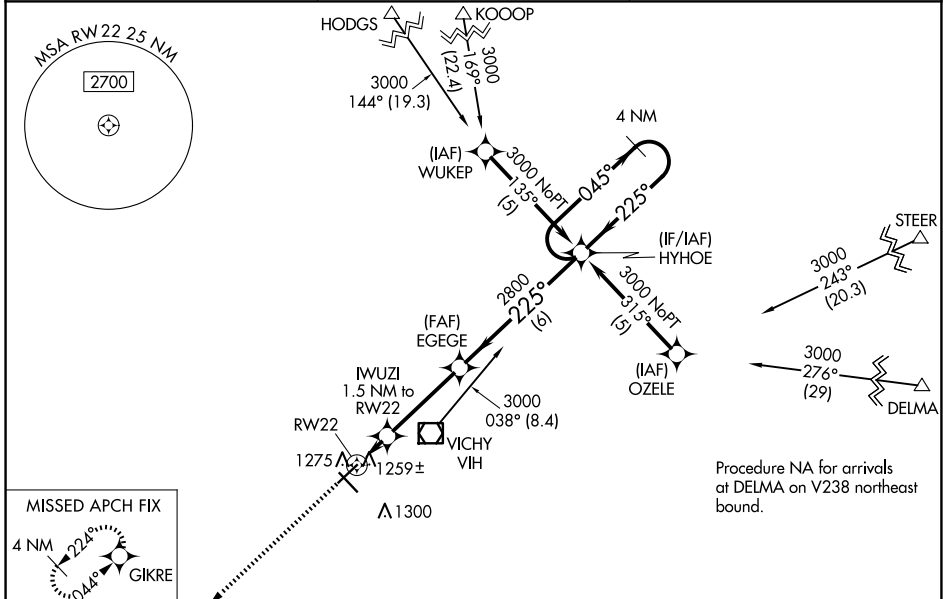
RNAV (GPS) RWY 22

ROLLA NTL (VIH)

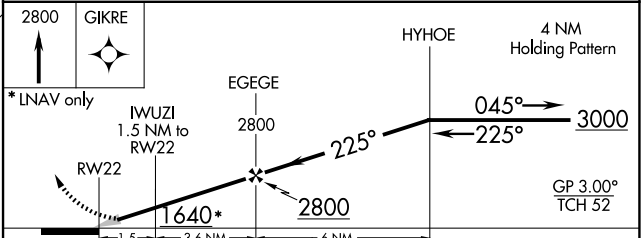
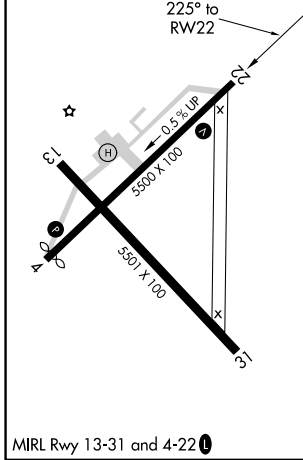
▽ For uncompensated Baro-VNAV systems, LNAV/VNAV NA below -17°C (2°F) or above 46°C (114°F).
△ NA DME/DME RNP-0.3 NA.

MISSED APPROACH:
 Climb to 2800 direct GIKRE and hold.

ASOS 119.025	KANSAS CITY CENTER 128.35 284.675	UNICOM 123.0 (CTAF) 0
------------------------	---	---------------------------------



ELEV 1148	TDZE 1117
-----------	-----------



CATEGORY	A	B	C	D
LPV DA		1367- ³ / ₄	250 (300- ³ / ₄)	
LNAV/VNAV DA		1529-1 ¹ / ₂	412 (400-1 ¹ / ₂)	
LNAV MDA	1520-1	403 (400-1)	1520-1 ¹ / ₄	403 (400-1 ¹ / ₄)
CIRCLING	1700-1	552 (600-1)	1700-1 ¹ / ₂ 552 (600-1 ¹ / ₂)	1740-2 592 (600-2)

NC-3, 23 JAN 2025 to 20 FEB 2025

NC-3, 23 JAN 2025 to 20 FEB 2025