

WAAS CH <b>78119</b> <b>W04A</b>	APP CRS <b>045°</b>	Rwy Idg TDZE <b>1137</b> Apt Elev <b>1148</b>	<b>5289</b>
--	------------------------	---	-------------

# RNAV (GPS) RWY 4

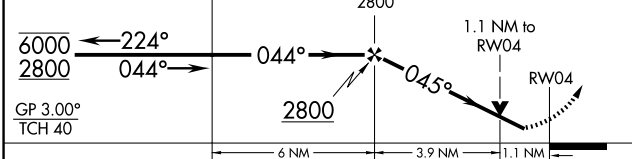
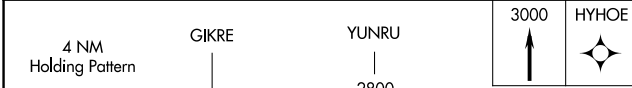
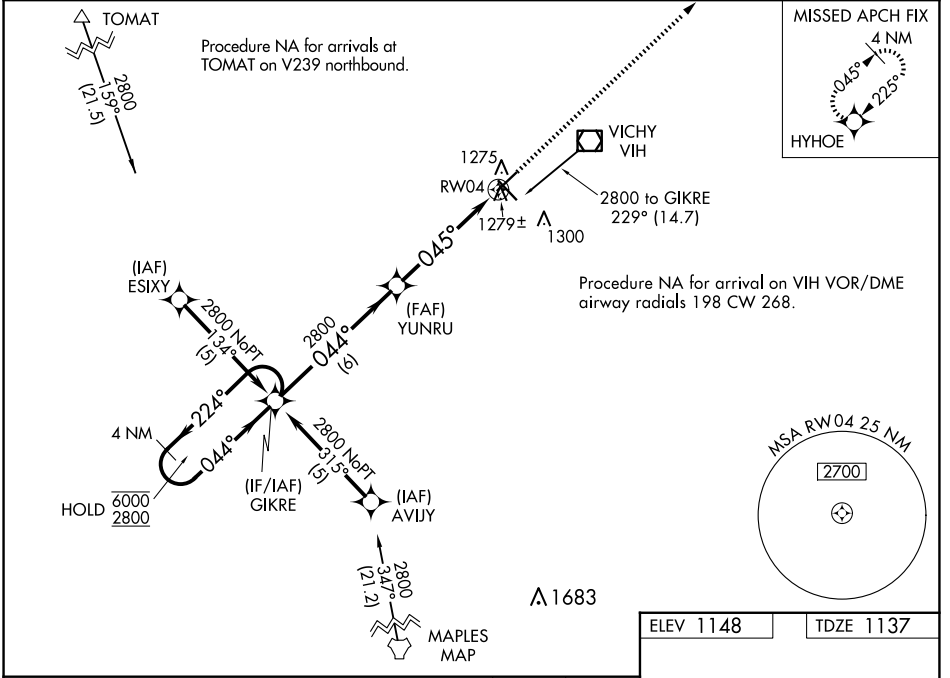
ROLLA NTL (VIH)

RNP APCH-GPS.

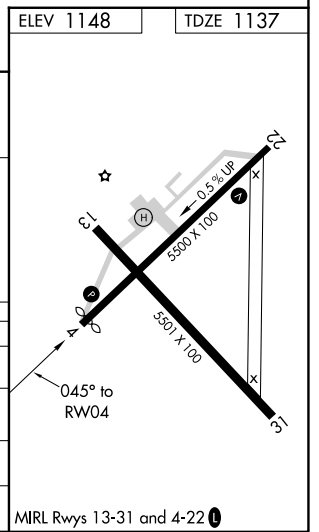
**▼** Rwy 4 helicopter visibility reduction below 3/4 SM NA.  
**▲** For uncompensated Baro-VNAV systems, LNAV/VNAV NA below -17°C or above 54°C.

MISSED APPROACH: Climb to 3000 direct HYHOE and hold.

ASOS <b>119.025</b>	KANSAS CITY CENTER <b>128.35 284.675</b>	UNICOM <b>123.0 (CTAF) ①</b>
------------------------	---	---------------------------------



CATEGORY	A	B	C	D
LPV DA	1387-1		250 (300-1)	
LNAV/VNAV DA	1549-1 1/8		412 (500-1 1/8)	
LNAV MDA	1540-1	403 (400-1)	1540-1 1/8	403 (400-1 1/8)
<b>C</b> CIRCLING	1580-1 432 (500-1)	1600-1 452 (500-1)	1600-1 1/2 452 (500-1 1/2)	1740-2 592 (600-2)



NC-3, 23 JAN 2025 to 20 FEB 2025

NC-3, 23 JAN 2025 to 20 FEB 2025