

PACKK NINE DEPARTURE

D-ATIS
123.8
CLNC DEL
120.1
CPDLC
RALEIGH DEP CON
125.3 353.675 (055°-229°)
132.35 256.9 (230°-054°)

**TOP ALTITUDE:
6000**

FLAT ROCK
113.3 FAK
Chan 80

GREENSBORO
116.2 GSO
Chan 109

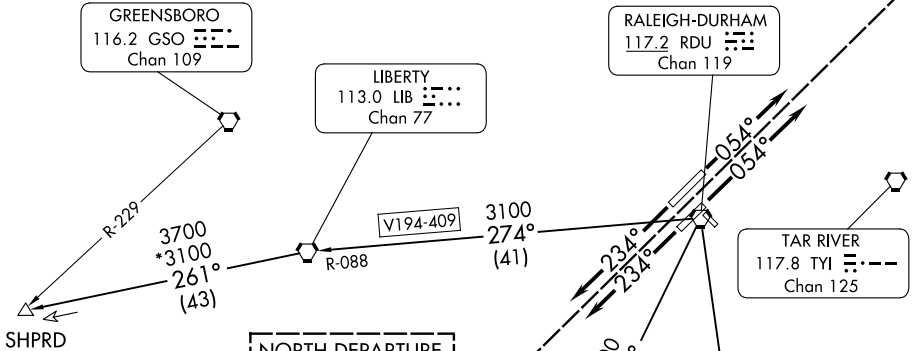
LIBERTY
113.0 LIB
Chan 77

RALEIGH-DURHAM
117.2 RDU
Chan 119

TAR RIVER
117.8 TYI
Chan 125

SE-2, 23 JAN 2025 to 20 FEB 2025

SE-2, 23 JAN 2025 to 20 FEB 2025



NORTH DEPARTURE
132.35 256.9

SOUTH DEPARTURE
125.3 353.675

SPECIAL INSTRUCTIONS:
For appropriate departure control frequency use frequency depicted within sector for route of flight after RDU VORTAC.

NOTE: RADAR required.
NOTE: Turbojets only.

TAKEOFF MINIMUMS

- Rwy 14, 32: NA-ATC.
- Rwys 5L/R: Standard.
- Rwy 23L: Standard with minimum climb of 250' per NM to 2300.
- Rwy 23R: Standard with minimum climb of 240' per NM to 2100.

NOTE: Chart not to scale.

(CONTINUED ON FOLLOWING PAGE)

PACKK NINE DEPARTURE