

# RNAV (RNP) Z RWY 23R

RALEIGH-DURHAM INTL (RDU)

APP CRS <b>234°</b>	Rwy Idg <b>10000</b> TDZE <b>409</b> Apt Elev <b>435</b>
------------------------	--

RNP AR APCH-GPS.

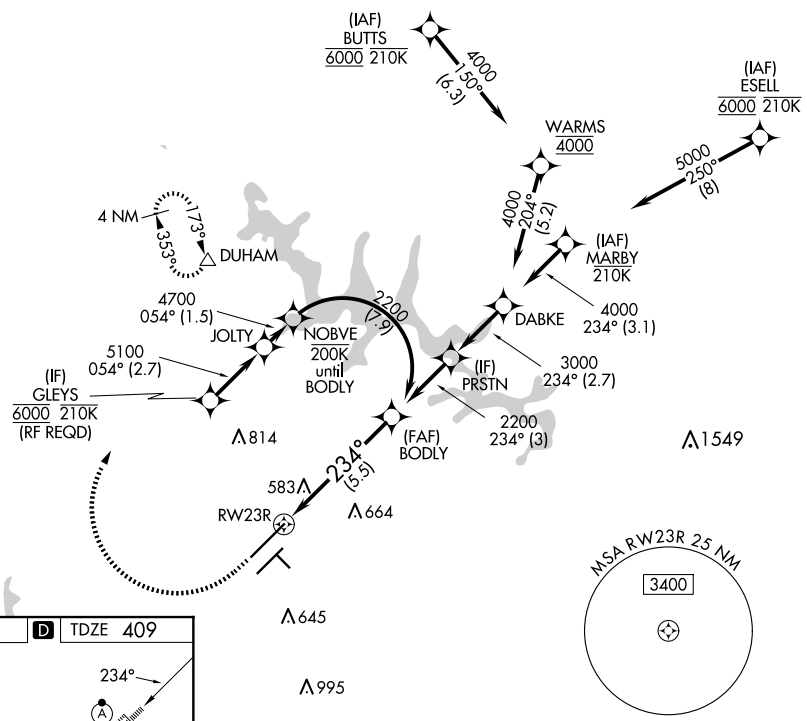
▼ For uncompensated Baro-VNAV systems, procedure NA below -12°C or above 54°C.  
For inop ALS, increase RNP 0.15 all Cats visibility to RVR 5500, increase RNP 0.30 all Cats visibility to 1½ SM. Simultaneous approach authorized except for arrivals at GLEYS.

ALSF-2 	MISSED APPROACH: Climb to 1000 then climbing right turn to 2200 direct DUHAM and hold.
------------	--

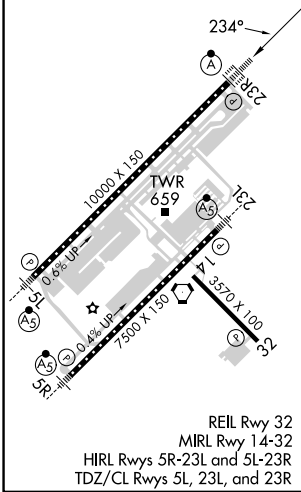
D-ATIS <b>123.8</b>	RALEIGH APP CON <b>127.675 307.9</b>	RALEIGH TOWER <b>127.45 257.8</b>	GND CON <b>121.9 348.6</b>	CLNC DEL <b>120.1</b>	CPDLC
------------------------	---	--------------------------------------	-------------------------------	--------------------------	-------

SE-2, 23 JAN 2025 to 20 FEB 2025

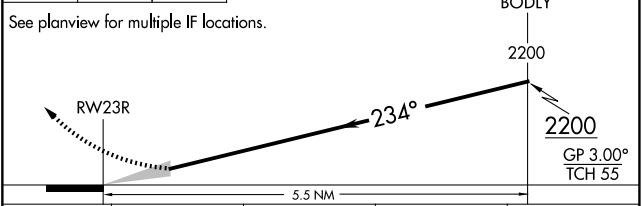
SE-2, 23 JAN 2025 to 20 FEB 2025



ELEV 435	<b>D</b>	TDZE 409
----------	----------	----------



1000	2200	DUHAM	VGSI and RNAV glidepath not coincident (VGSI Angle 3.00°/TCH 69°).
------	------	-------	--



CATEGORY	A	B	C	D
RNP 0.15 DA		760/30	351 (400-5%)	
RNP 0.30 DA		910/55	501 (500-1)	

## AUTHORIZATION REQUIRED